

A PLAT OF MONARCH CLUB DRIVE

BEING PLAT NO. 19, MARTIN DOWNS, A P.U.D.
LYING IN SECTIONS 7 AND 18, TOWNSHIP 38 SOUTH, RANGE 41 EAST
MARTIN COUNTY, FLORIDA

JANUARY, 1987

SHEET 2 OF 2

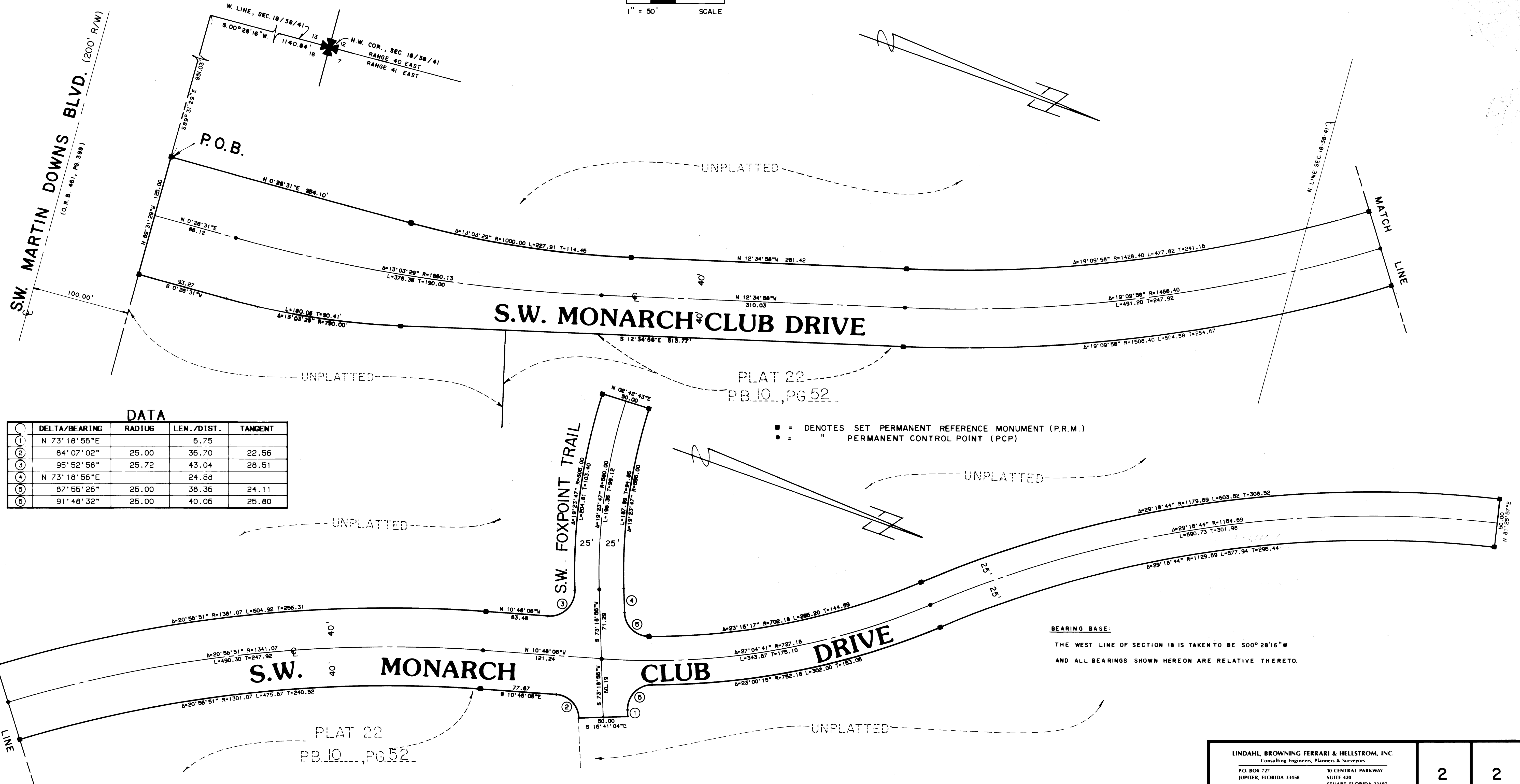
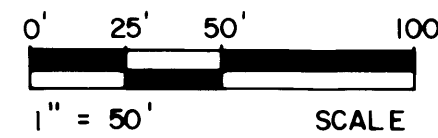
I, Marsha Stiller, Clerk of the Circuit Court of Martin County, Florida, hereby certify that this Plat was filed for record in Plat Book 10, Page 72, Martin County, Florida, Public Records, this _____ day of _____, 1987.

Marsha Stiller, Clerk
Circuit Court
Martin County, Florida

By: _____
Deputy Clerk

File No. _____

(Circuit Court Seal)



DATA

NO.	DELTA/BEARING	RADIUS	LEN./DIST.	TANGENT
1	N 73° 18' 56\"/>			

LINDAHL, BROWNING FERRARI & HELLSTROM, INC. Consulting Engineers, Planners & Surveyors P.O. BOX 727 JUPITER, FLORIDA 33458		10 CENTRAL PARKWAY SUITE 420 STUART, FLORIDA 33497
2	2	