

AF 13283

A PLAT OF STUART WEST, PHASE III B

FEBRUARY, 1987

BEING A PORTION OF SECTION 13,
TOWNSHIP 38 SOUTH, RANGE 39 EAST
MARTIN COUNTY, FLORIDA

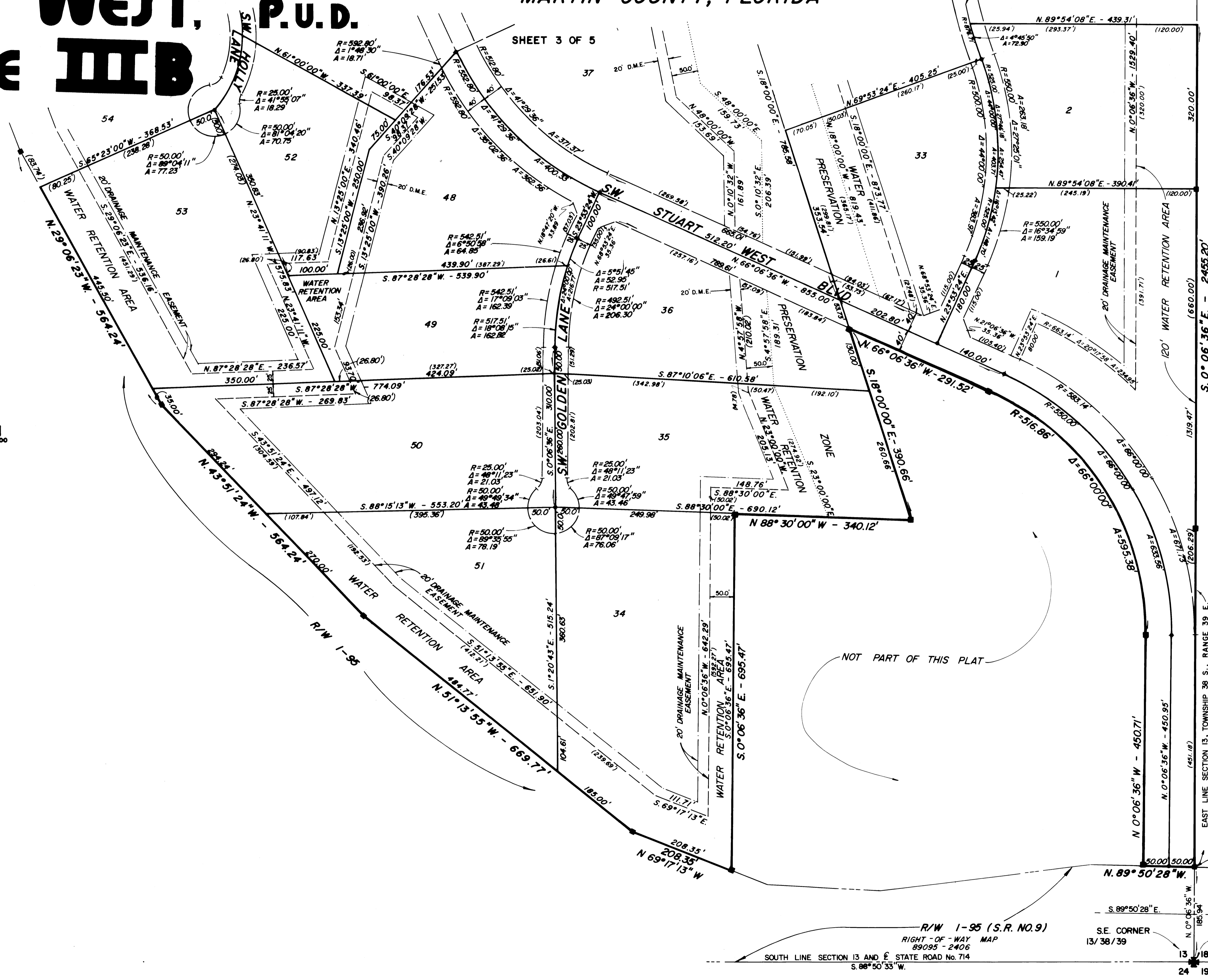
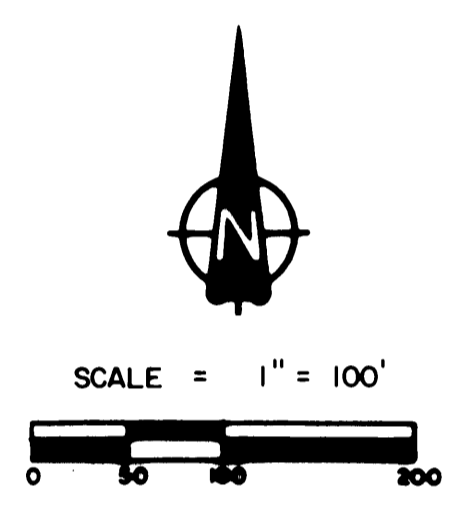
SHEET 3 OF 5

I, MARSHA STILLER, CLERK OF THE CIRCUIT COURT OF MARTIN COUNTY, FLORIDA, HEREBY CERTIFY THAT THIS PLAT WAS FILED FOR RECORD IN PLAT BOOK 10, PAGE 70, MARTIN COUNTY, FLORIDA, PUBLIC RECORDS, THIS DAY OF _____ A.D., 1987.

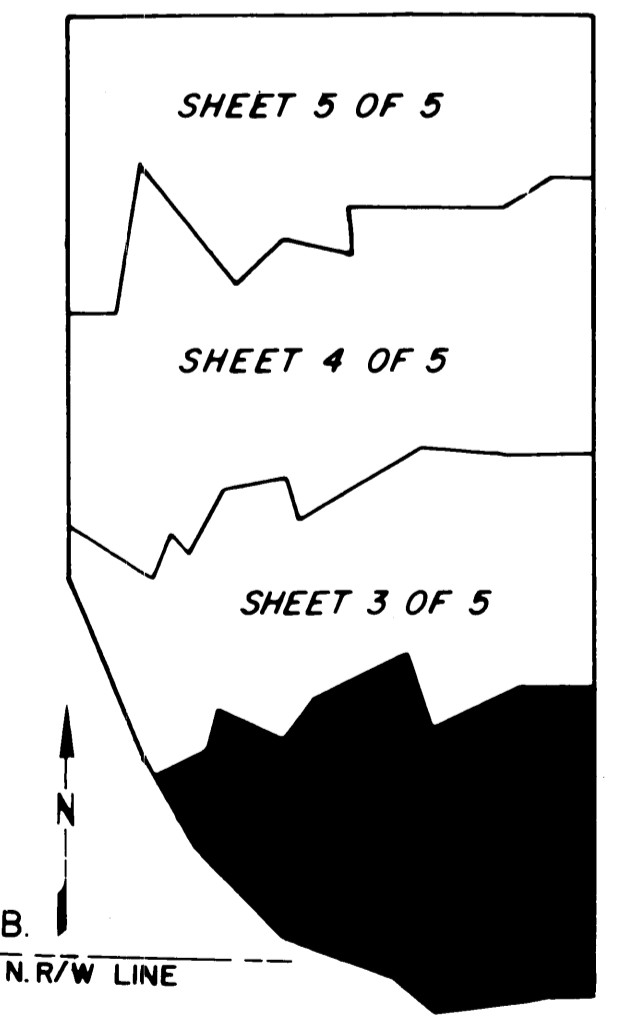
MARSHA STILLER, CLERK
CIRCUIT COURT
MARTIN COUNTY, FLORIDA

BY
DEPUTY CLERK

FILE NO.



- LEGEND**
- ACCESS AND UTILITY EASEMENT
 - MARSH PRESERVATION AREA
 - DRAINAGE EASEMENT
 - 20' DRAINAGE MAINTENANCE EASEMENT
 - PERMANENT REFERENCE MONUMENT SET
 - PERMANENT CONTROL POINT
 - D.M.E. = DRAINAGE MAINTENANCE EASEMENT
 - BEARING BASE:
THE SOUTH LINE OF SECTION 13 IS TAKEN TO BE S 88° 50' 33" W AND ALL OTHER BEARINGS ARE RELATIVE THERETO.



R/W 1-95 (S.R. NO. 9)
RIGHT-OF-WAY MAP
89095 - 2406
SOUTH LINE SECTION 13 AND E STATE ROAD No. 714
S. 88° 50' 33" W.

LINDAHL, BROWNING, FERRARI & HELLSTROM, INC.
CONSULTING ENGINEERS, PLANNERS & SURVEYORS
P.O. BOX 727
JUPITER, FLORIDA 33460-0727
117 SOUTH BECHO STREET
FORT PIERCE, FLORIDA 33901

J. A. BLUEPRINTERS, WEST PALM BEACH