

MARINER SANDS PLAT NO. 9

BEING A TRACT OF LAND LYING IN SECTION 31, TOWNSHIP 38 SOUTH, RANGE 42 EAST, MARTIN COUNTY, FLORIDA. BEING A PART OF THE MARINER SANDS P.U.D.

I, MARSHA STILLER, Clerk of the Circuit Court of Martin County, Florida, hereby certify that this plat was filed for record in Plat Book 10, Page 68, Martin County, Florida, public records, this day of _____, 1987.

MARSHA STILLER, CLERK
CIRCUIT COURT
MARTIN COUNTY, FLORIDA

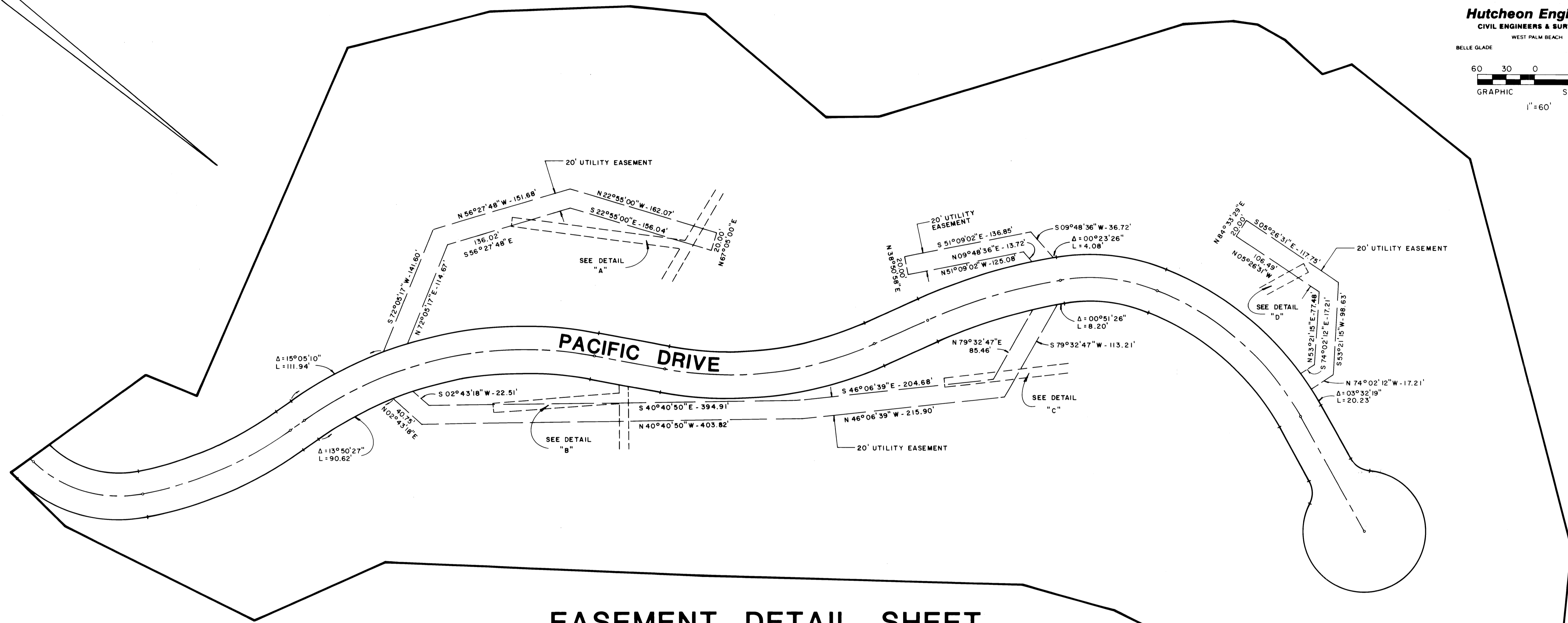
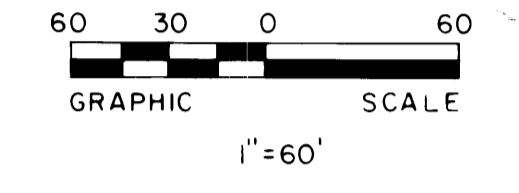
File No. _____

BY: _____
Deputy Clerk

DECEMBER 1986
SHEET 4 OF 4 SHEETS

Hutcheon Engineers
CIVIL ENGINEERS & SURVEYORS

WEST PALM BEACH
BELLE GLADE STUART



EASEMENT DETAIL SHEET

