

MARINER SANDS PLAT NO. 9

BEING A TRACT OF LAND LYING IN SECTION 31, TOWNSHIP 38 SOUTH, RANGE 42 EAST, MARTIN COUNTY, FLORIDA. BEING A PART OF THE MARINER SANDS P.U.D.

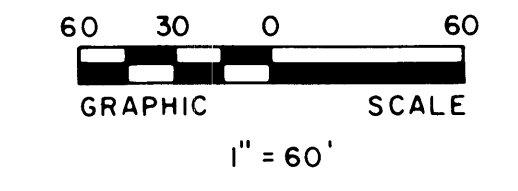
I, MARSHA STILLER, Clerk of the Circuit Court of Martin County, Florida, hereby certify that this plat was filed for record in Plat Book 10, Page 68, Martin County, Florida, public records, this day of 1987.

MARSHA STILLER, CLERK
CIRCUIT COURT
MARTIN COUNTY, FLORIDA

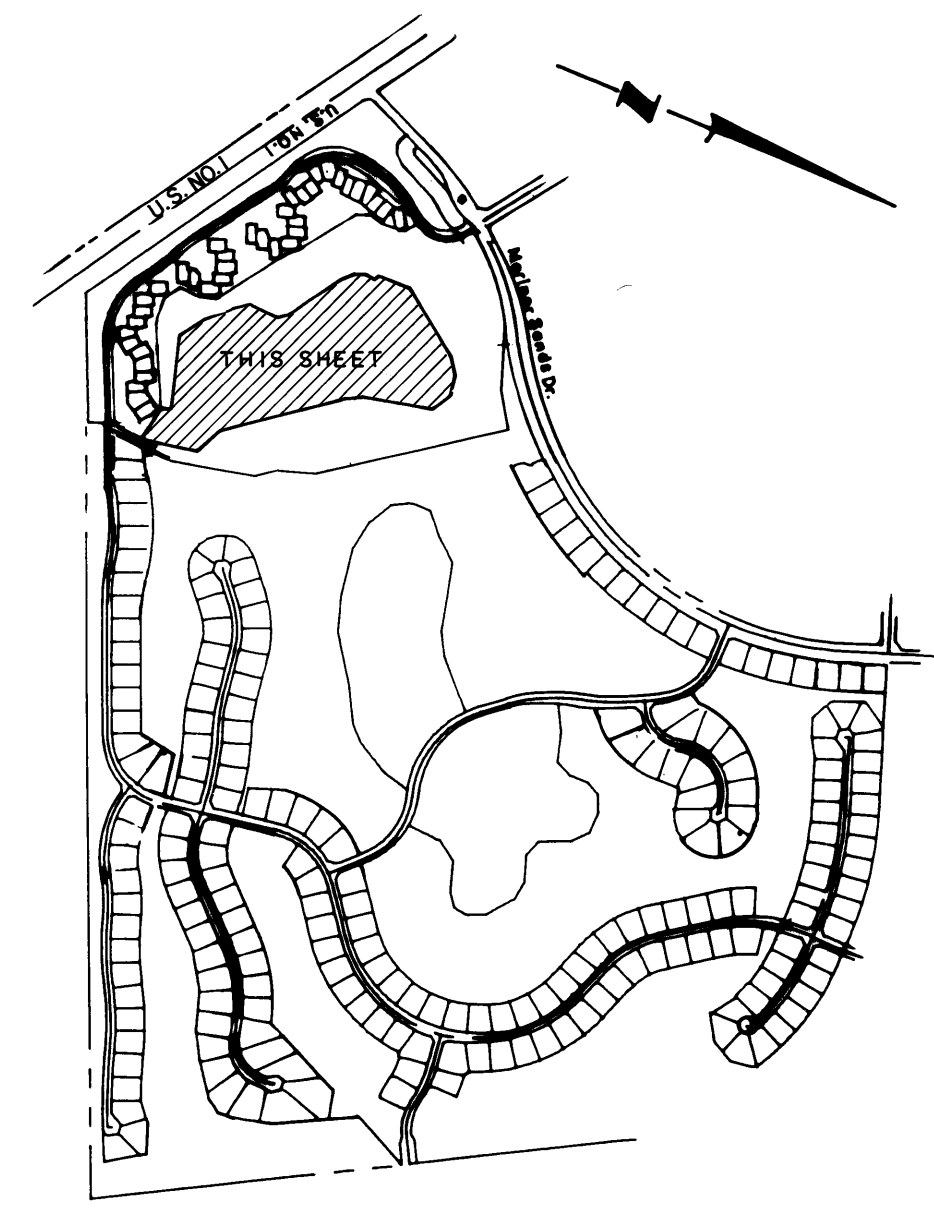
File No. _____ Deputy Clerk

DECEMBER 1986
SHEET 3 OF 4 SHEETS

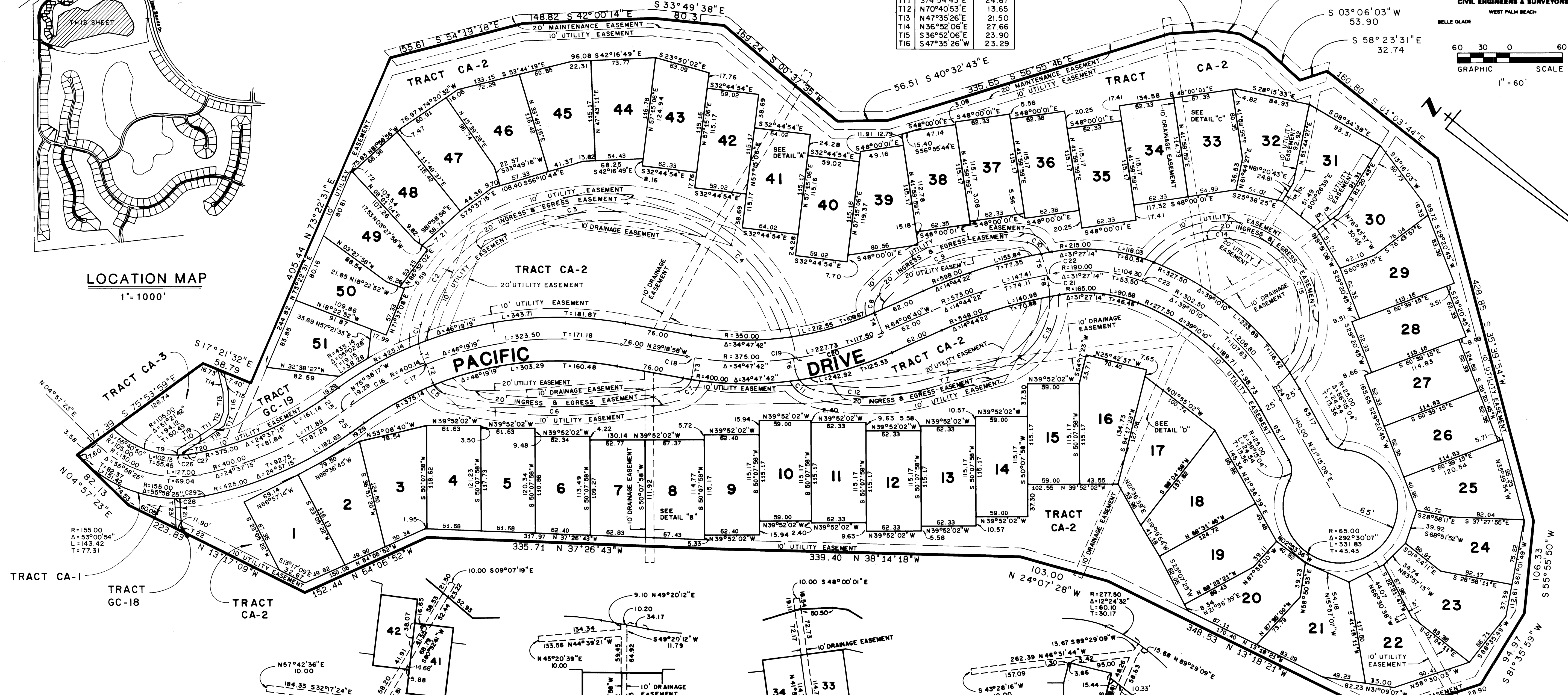
Hutcheon Engineers
CIVIL ENGINEERS & SURVEYORS
WEST PALM BEACH
BELLE GLADE STUART



CURVE TABLE				CURVE TABLE				CURVE TABLE				TANGENT TABLE		TANGENT TABLE			
NO.	DELTA	RADIUS	LENGTH	TANGENT	NO.	DELTA	RADIUS	LENGTH	TANGENT	NO.	DELTA	RADIUS	LENGTH	TANGENT	NO.	BEARING	DISTANCE
C1	32°00'00"	45.00	25.13	12.90	C11	69°00'00"	29.10	35.04	20.00	C21	00°03'28"	573.00	0.58	0.29	T1	S28°29'42"W	12.66
C2	57°00'00"	169.44	168.57	92.00	C12	28°51'60"	262.34	132.17	67.52	C22	00°57'40"	573.00	9.61	4.81	T2	S29°56'54"W	22.37
C3	27°00'53"	294.00	139.30	70.98	C13	85°00'00"	84.58	125.48	77.50	C23	01°35'56"	190.00	5.30	2.65	T3	N58°15'15"E	21.85
C4	76°53'42"	210.00	281.83	166.73	C14	104°52'11"	100.00	183.03	130.02	C24	02°54'15"	302.50	15.33	7.67	T4	S29°04'16"W	23.42
C5	56°15'01"	20.00	19.64	10.69	C15	104°51'15"	100.00	183.00	129.98	C25	02°57'31"	155.00	8.00	4.00	T5	N32°33'04"E	24.17
C6	27°58'56"	550.00	268.61	137.04	C16	13°48'29"	400.14	96.43	48.45	C26	03°18'14"	105.00	6.05	3.03	T6	N42°29'42"E	12.00
C7	67°26'42"	20.00	23.54	13.35	C17	00°05'40"	400.14	0.66	0.33	C27	08°50'00"	105.00	16.19	8.11	T7	N55°22'18"W	77.73
C8	62°00'00"	20.00	21.64	12.02	C18	01°20'17"	375.00	8.76	4.38	C28	02°13'30"	155.00	6.02	3.01	T8	S39°37'42"W	12.00
C9	58°28'48"	185.00	188.82	103.56	C19	00°18'49"	375.00	2.05	1.03	C29	10°46'16"	155.00	29.14	14.61	T9	N57°07'24"E	6.01
C10	63°00'00"	20.00	21.99	12.26	C20	15°39'08"	375.00	102.44	51.54	T10	S71°30'54"E	32.46			T11	S74°54'43"E	24.67



LOCATION MAP
1" = 1000'



- LEGEND**
- DENOTES (P.C.P) PERMANENT CONTROL POINT
 - DENOTES (P.R.M) PERMANENT REFERENCE MONUMENT.
 - DENOTES (P.R.M) PERMANENT REFERENCE MONUMENT FOUND.
 - W- DENOTES WATER TRACTS AND ITS DESIGNATION.
 - G.C. DENOTES GOLF COURSE TRACTS.
 - GA DENOTES GREEN AREA.
 - D.E. DENOTES DRAINAGE EASEMENT
 - C.A. DENOTES COMMON AREA
 - M.E. DENOTES MAINTENANCE EASEMENT
 - U.E. DENOTES UTILITY EASEMENT

DETAIL "A"
N.T.S.

DETAIL "B"
N.T.S.

DETAIL "C"
N.T.S.

DETAIL "D"
N.T.S.

NOTE:
BEARINGS SHOWN HEREON ARE REFERENCED TO PLAT OF WINGED FOOT COTTAGES AS RECORDED IN PLAT BOOK 9, PAGE 92, PUBLIC RECORDS OF MARTIN COUNTY, FLORIDA.