

MARINER SANDS PLAT NO. 9

BEING A TRACT OF LAND LYING IN SECTION 31, TOWNSHIP 38 SOUTH, RANGE 42 EAST, MARTIN COUNTY, FLORIDA. BEING A PART OF THE MARINER SANDS P.U.D.

I, MARSHA STILLER, Clerk of the Circuit Court of Martin County, Florida, hereby certify that this plat was filed for record in Plat Book 10, Page 60, Martin County, Florida, public records, this _____ day of _____, 1987

MARSHA STILLER, CLERK
CIRCUIT COURT
MARTIN COUNTY, FLORIDA

BY: _____
Deputy Clerk

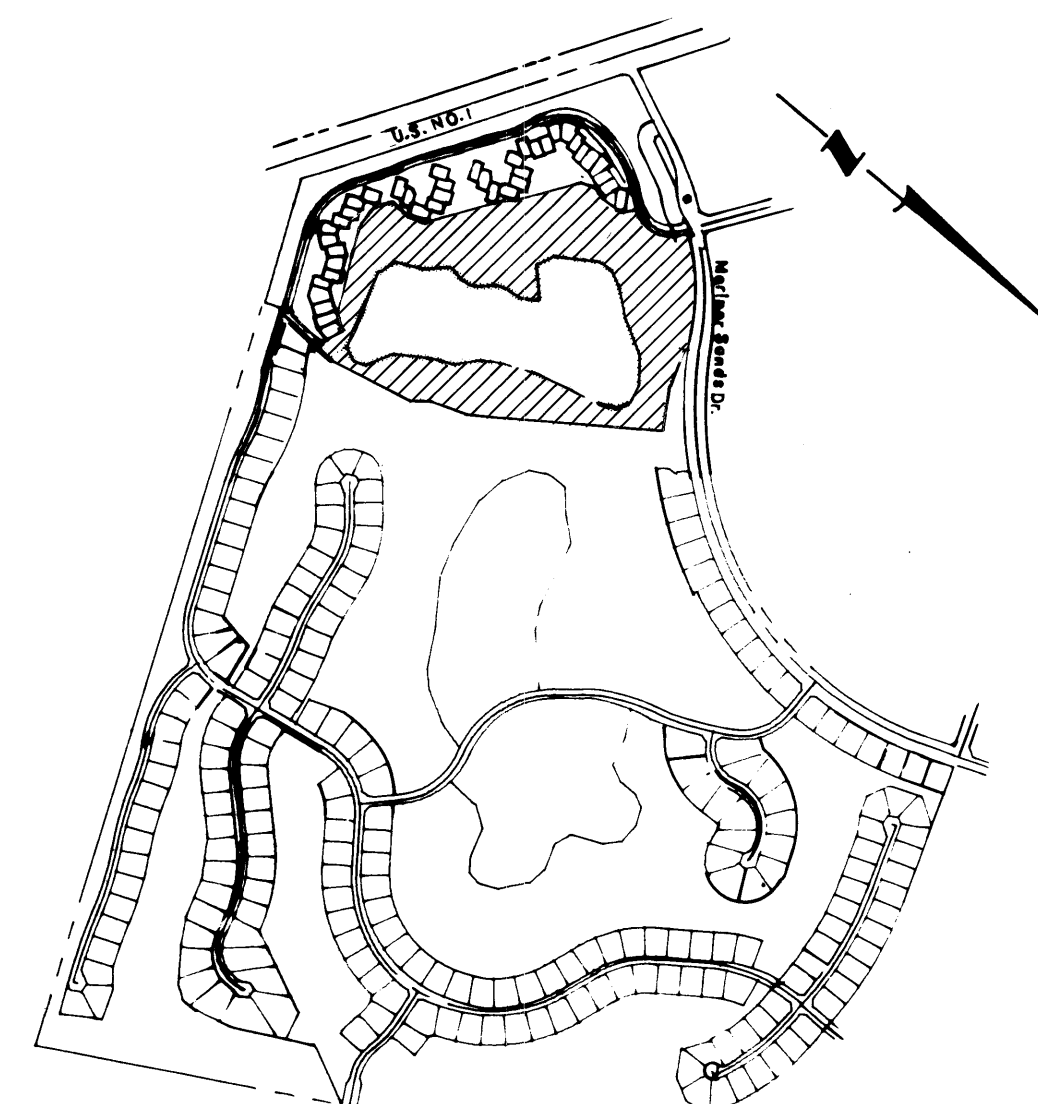
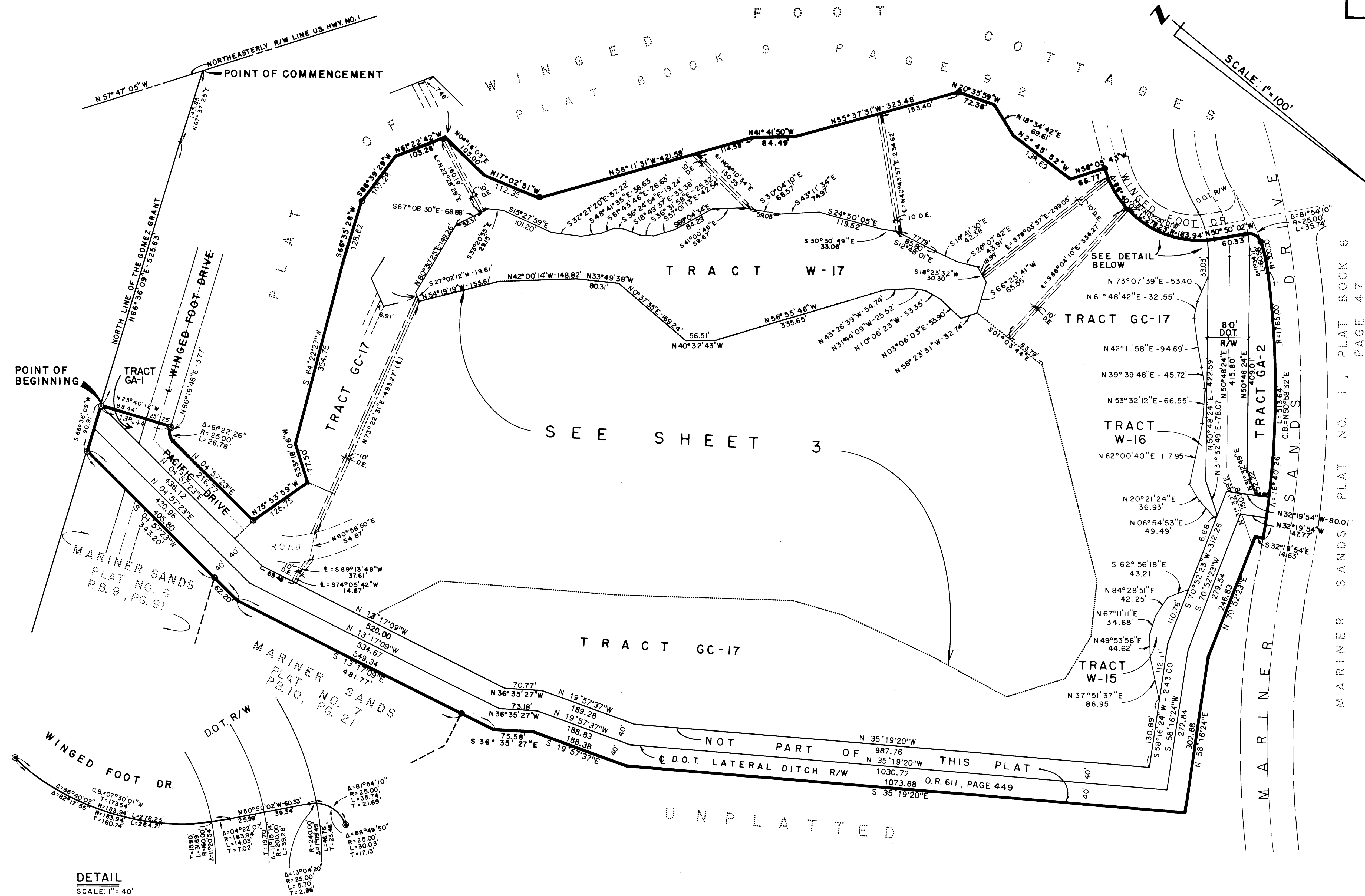
File No. _____

DECEMBER 1986
SHEET 2 OF 4 SHEETS

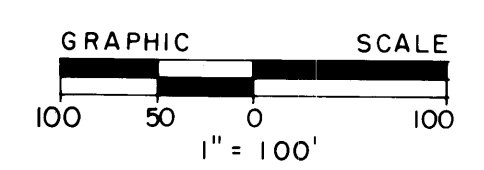
Hutcheon Engineers
CIVIL ENGINEERS & SURVEYORS

WEST PALM BEACH
BELLE GLADE STUART

MARINER SANDS PLAT NO. 1, PLAT BOOK 6
MARINER SANDS PLAT NO. 9, PLAT BOOK 9



LOCATION MAP
1" = 1000'



LEGEND

- DENOTES (P.C.P) PERMANENT CONTROL POINT
- ⊙ DENOTES (P.R.M) PERMANENT REFERENCE MONUMENT.
- ⊙ DENOTES (P.R.M.) PERMANENT REFERENCE MONUMENT FOUND.
- W DENOTES WATER TRACTS AND ITS DESIGNATION.
- G.C. DENOTES GOLF COURSE TRACTS.
- GA DENOTES GREEN AREA.
- D.E. DENOTES DRAINAGE EASEMENT
- C.A. DENOTES COMMON AREA
- M.E. DENOTES MAINTENANCE EASEMENT
- U.E. DENOTES UTILITY EASEMENT

NOTE:
BEARINGS SHOWN HEREON ARE REFERENCED TO PLAT OF WINGED FOOT COTTAGES AS RECORDED IN PLAT BOOK 9, PAGE 92, PUBLIC RECORDS OF MARTIN COUNTY, FLORIDA.

DETAIL
SCALE: 1" = 40'

UNPLATTED