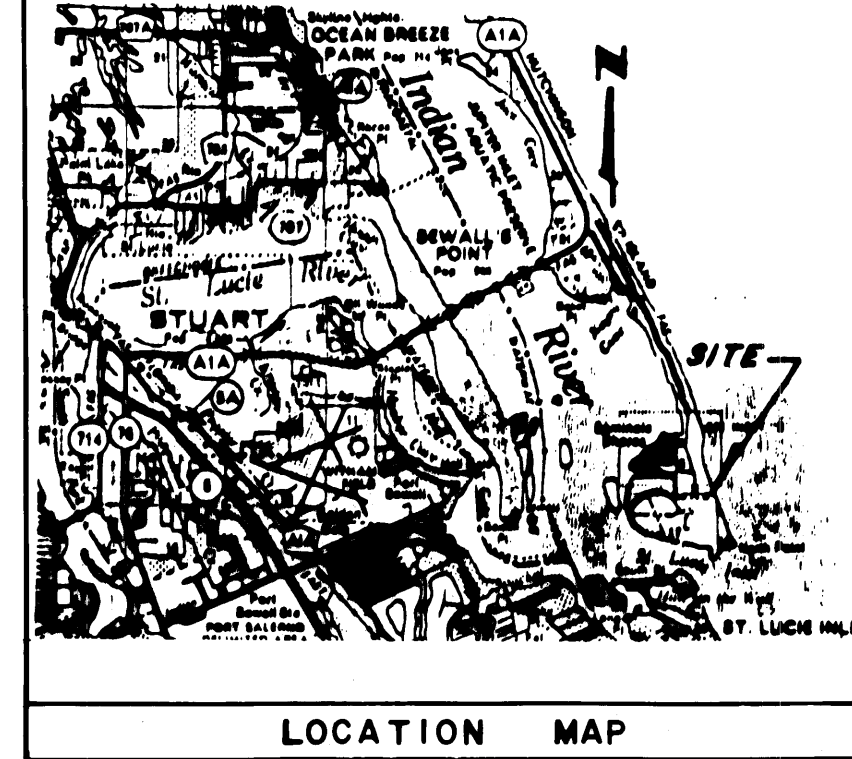


PLAT NO. 12A SAILFISH POINT P.U.D.

BEING A REPLAT OF PLAT NO. 12 SAILFISH POINT P.U.D. AS RECORDED IN
IN PLAT BOOK 9, PAGE 96, AND LYING IN SECTION 8,
TOWNSHIP 38 SOUTH, RANGE 42 EAST,
MARTIN COUNTY, FLORIDA

JANUARY, 1987

SHEET 2 OF 2



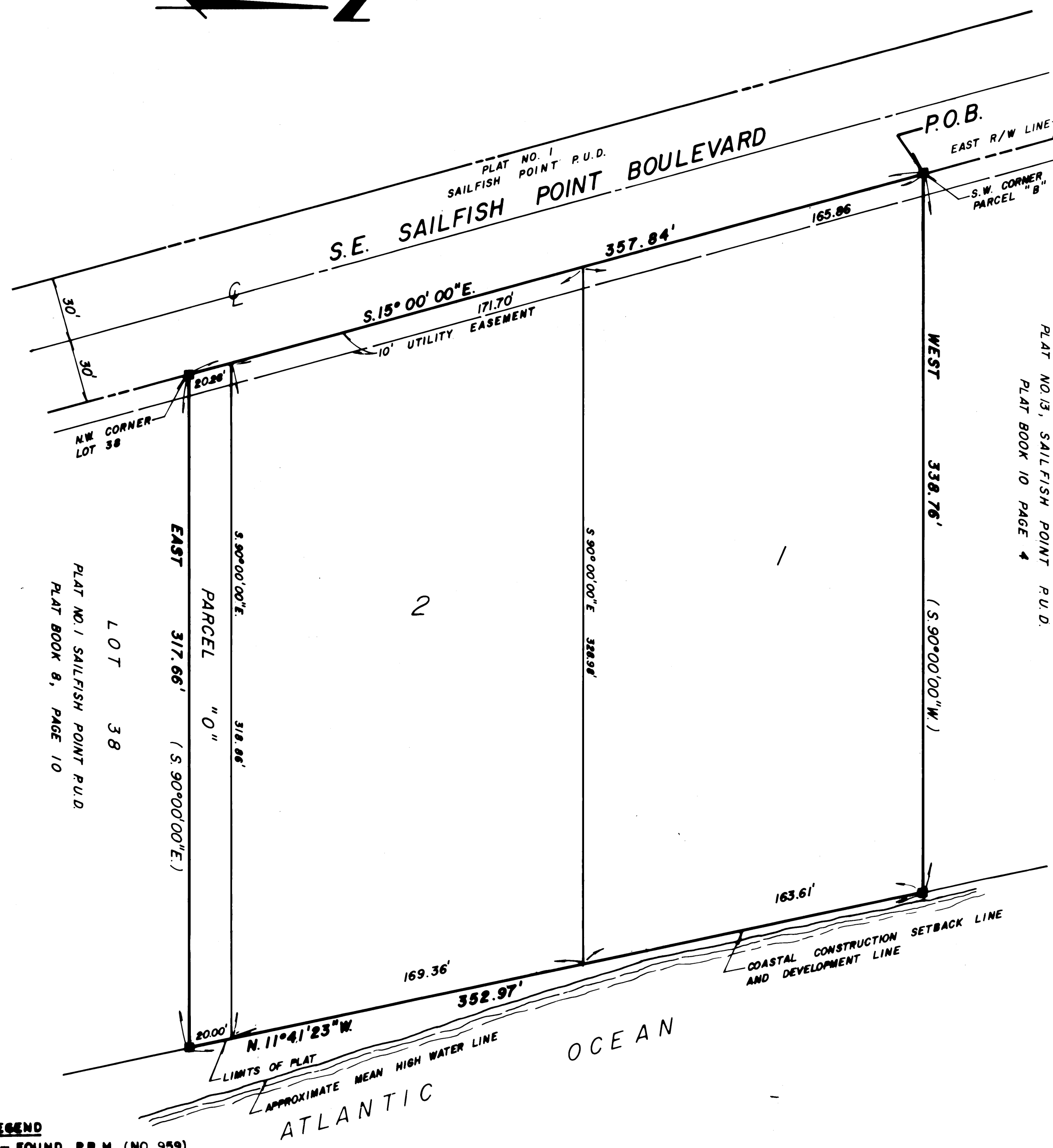
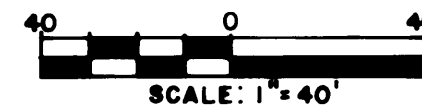
I, MARSHA STILLER, CLERK OF THE CIRCUIT COURT OF MARTIN COUNTY, FLORIDA, HEREBY CERTIFY THAT THIS PLAT WAS FILED FOR RECORD IN PLAT BOOK 10, PAGE 67, MARTIN COUNTY, FLORIDA, PUBLIC RECORDS THIS DAY OF 1987.

MARSHA STILLER, CLERK
CIRCUIT COURT
MARTIN COUNTY, FLORIDA

BY: _____
DEPUTY CLERK

FILE NO. _____

(CIRCUIT COURT SEAL)



NOTE:

THIS PLAT AND THE PROPERTY DESCRIBED HEREIN, ARE SUBJECT TO THE COVENANTS, RESTRICTIONS, LIEN RIGHTS, AND OTHER PROVISIONS CONTAINED IN THAT CERTAIN DECLARATION OF PROTECTIVE COVENANTS AND RESTRICTIONS FOR SAILFISH POINT, DATED JANUARY 25, 1980, AND RECORDED FEBRUARY 4, 1980, UNDER CLERK'S FILE NUMBER 365941, IN OFFICIAL RECORD BOOK 488, AT PAGE 2058, PUBLIC RECORDS OF MARTIN COUNTY, FLORIDA, AS AMENDED BY THE FIRST AMENDMENT TO DECLARATION, RECORDED UNDER CLERK'S FILE NUMBER 399150, IN OFFICIAL RECORD BOOK 513, AT PAGE 1094, PUBLIC RECORDS OF MARTIN COUNTY, FLORIDA, AND THE SECOND AMENDMENT TO DECLARATION, RECORDED UNDER CLERK'S FILE NUMBER 478598, IN OFFICIAL RECORD BOOK 573, PAGE 1112, PUBLIC RECORDS OF MARTIN COUNTY, FLORIDA, AND THE THIRD AMENDMENT TO DECLARATION, RECORDED UNDER CLERK'S FILE NUMBER 514594, IN OFFICIAL RECORD BOOK 602, PAGE 899, PUBLIC RECORDS OF MARTIN COUNTY, FLORIDA, AND THE FOURTH AMENDMENT TO DECLARATION, RECORDED UNDER CLERK'S FILE NUMBER 528378, IN OFFICIAL RECORD BOOK 622, PAGE 199, PUBLIC RECORDS OF MARTIN COUNTY, FLORIDA, AND THE FIFTH AMENDMENT TO DECLARATION, RECORDED UNDER CLERK'S FILE NUMBER 591172, IN OFFICIAL RECORD BOOK 665, PAGE 2683, PUBLIC RECORDS OF MARTIN COUNTY, FLORIDA, TOGETHER WITH THE COVENANTS, RESTRICTIONS, AND OTHER PROVISIONS CONTAINED IN THAT CERTAIN SUPPLEMENTARY DECLARATION OF PROTECTIVE COVENANTS AND RESTRICTIONS FOR PLAT NO. 12 SAILFISH POINT P.U.D., RECORDED CONCURRENTLY WITH THE RECORDATION OF THIS PLAT.

LEGEND
B - FOUND P.R.M. (NO. 959)

BEARING BASE:
THE EAST RIGHT-OF-WAY LINE OF S.E. SAILFISH POINT BOULEVARD IS TAKEN AS BEING S. 19° 00' 00" E. AND ALL OTHER BEARINGS ARE RELATIVE THERE TO.

SUBDIVISION PARCEL
CONTROL NO. 02-32-42-015-000-000,0-0

TITLE CERTIFICATION

COUNTY OF MARTIN S.S.
STATE OF FLORIDA

I, JAMES E. KNIGHT, MEMBER OF THE FLORIDA BAR, HEREBY CERTIFY THAT AS OF JANUARY 9TH, 1987, AT 8:30 A.M.:

- APPARENT RECORD TITLE TO THE LAND DESCRIBED AND SHOWN ON THIS PLAT IS IN THE NAMES OF THE INDIVIDUALS AND THE PARTNERSHIP EXECUTING THE DEDICATION HEREON.
- ALL RECORDED MORTGAGES, NOT SATISFIED OR RELEASED OF RECORD, ENCUMBERING THE LAND DESCRIBED HEREON ARE AS FOLLOWS:
 - A. NONE

DATED THIS 12TH DAY OF JANUARY, 1987.

BY: James E. Knight
JAMES E. KNIGHT
3601 EAST OCEAN BOULEVARD
STUART, FLORIDA 33493-6737

SURVEY CERTIFICATE

COUNTY OF MARTIN S.S.
STATE OF FLORIDA

I, S. DALE MONROE, DO HEREBY CERTIFY THAT THIS PLAT OF PLAT NO. 12A SAILFISH POINT, P.U.D., IS A TRUE AND CORRECT REPRESENTATION OF A SURVEY MADE UNDER MY RESPONSIBLE DIRECTION AND SUPERVISION AND THAT SAID SURVEY IS ACCURATE TO THE BEST OF MY KNOWLEDGE AND BELIEF AND THAT PERMANENT REFERENCE MONUMENTS HAVE BEEN PLACED, AS REQUIRED BY LAW, AND FURTHER THAT THE SURVEY DATA COMPLIES WITH ALL THE REQUIREMENTS OF CHAPTER 177, PART 1, FLORIDA STATUTES, AS AMENDED AND ORDINANCES OF MARTIN COUNTY, FLORIDA.

S. Dale Monroe
S. DALE MONROE
REGISTERED SURVEYOR NO. 3956
STATE OF FLORIDA

NOTE:

THE FOLLOWING BUILDING SETBACK LINES SHALL APPLY TO LOTS 1 AND 2 AS PLATTED HEREON.

- FRONT SETBACK = 25.0 FEET FROM RIGHT-OF-WAY LINE.
- SIDE SETBACK = 15.0 FEET FROM PROPERTY LINE.
- REAR SETBACK = 50.0 FEET FROM COASTAL CONSTRUCTION SETBACK LINE.

THIS INSTRUMENT WAS PREPARED BY:
GARY V. PORTER FOR
LINDAEL, BROWNING, FERRARI & HELLSTROM, INC.
210 JUPITER LAKES BOULEVARD
P.O. BOX 727
JUPITER, FLORIDA 33458

COUNTY APPROVAL

COUNTY OF MARTIN S.S.
STATE OF FLORIDA

THIS PLAT IS HEREBY APPROVED BY THE UNDERSIGNED ON THE DATE, OR DATES, INDICATED.

1/16/87 DATE J. B. Williams COUNTY ENGINEER

12/16/86 DATE Robert S. Brown COUNTY ATTORNEY

2/4/87 DATE Gary V. Porter CHAIRMAN - PLANNING AND ZONING COMMISSION OF MARTIN COUNTY, FLORIDA

2/3/87 DATE Marsha Stiller CHAIRMAN - BOARD OF COUNTY COMMISSIONERS OF MARTIN COUNTY, FLORIDA

ATTEST: Marsha Stiller
CLERK
By Charlotte Buckley, P.C.

LINDAEL, BROWNING, FERRARI & HELLSTROM, INC. CONSULTING ENGINEERS, PLANNERS & ARCHITECTS P.O. BOX 727 JUPITER, FLORIDA 33458	2	2
---	---	---