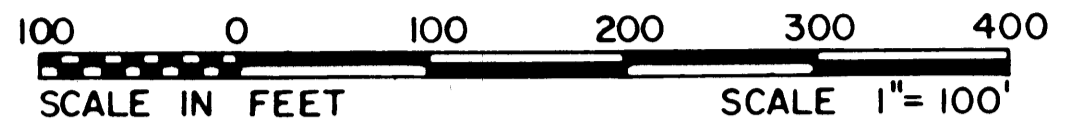


# OLD TRAIL P.U.D. - PHASE 1

IN PART OF SECTIONS 23 AND 24, TOWNSHIP 40 SOUTH, RANGE 41 EAST

MARTIN COUNTY, FLORIDA  
GEE & JENSON  
ENGINEERS - ARCHITECTS - PLANNERS, INC.  
WEST PALM BEACH, FLORIDA  
JUNE 1986



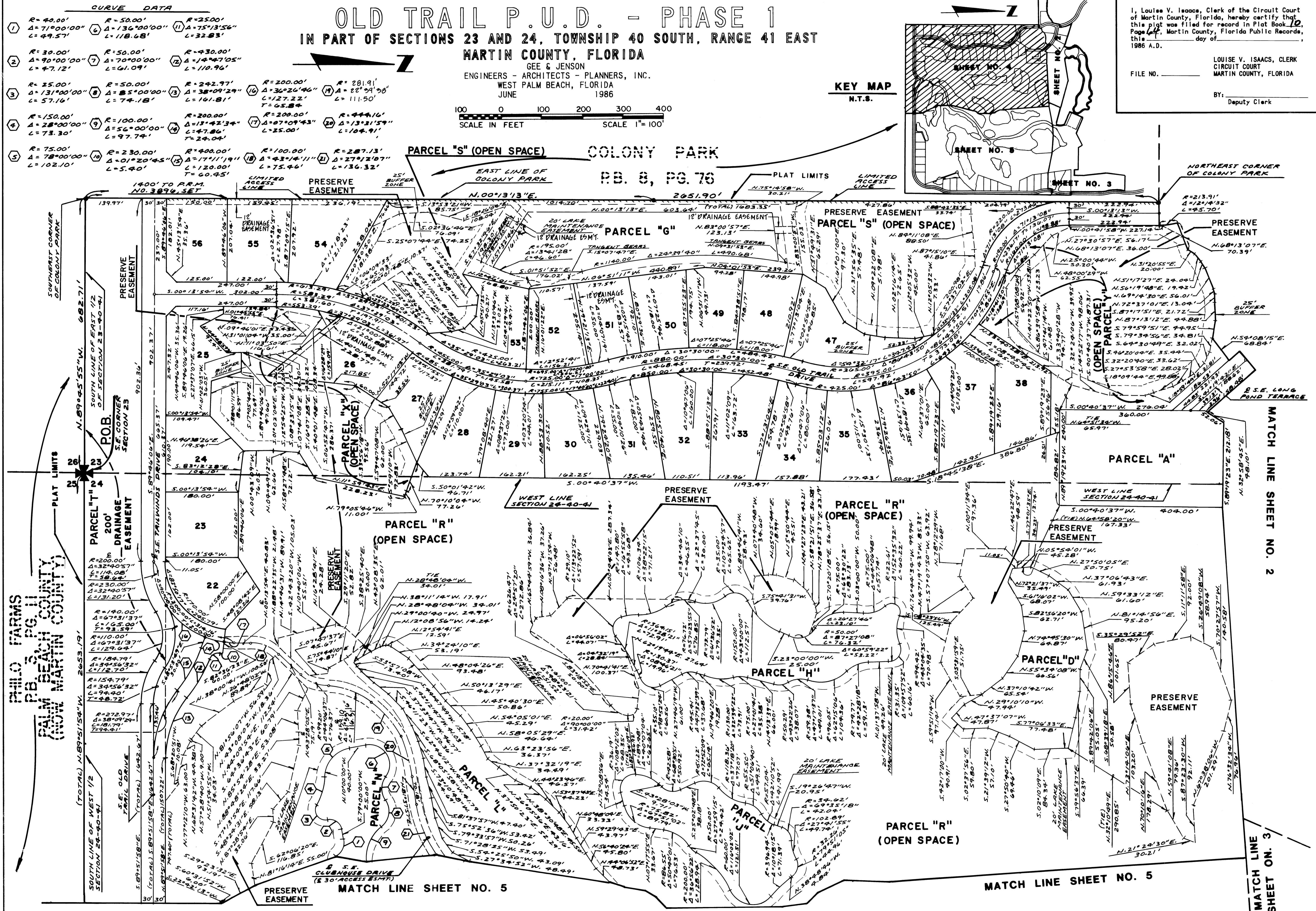
KEY MAP  
N.T.S.

I, Louise V. Isaacs, Clerk of the Circuit Court of Martin County, Florida, hereby certify that this plat was filed for record in Plat Book 10, Page 44, Martin County, Florida Public Records, this \_\_\_\_\_ day of \_\_\_\_\_, 1986 A.D.

LOUISE V. ISAACS, CLERK  
CIRCUIT COURT  
MARTIN COUNTY, FLORIDA

FILE NO. \_\_\_\_\_

By: \_\_\_\_\_  
Deputy Clerk



**CURVE DATA**

① R=40.00' Δ=71°00'00" L=49.57'	⑥ R=50.00' Δ=136°00'00" L=118.68'	⑪ R=25.00' Δ=75°13'56" L=32.83'
② R=30.00' Δ=90°00'00" L=47.12'	⑦ R=50.00' Δ=70°00'00" L=61.09'	⑫ R=430.00' Δ=14°47'05" L=110.96'
③ R=25.00' Δ=131°00'00" L=57.16'	⑧ R=50.00' Δ=85°00'00" L=74.18'	⑬ R=242.97' Δ=38°09'29" L=101.81'
④ R=150.00' Δ=28°00'00" L=73.30'	⑨ R=100.00' Δ=56°00'00" L=97.74'	⑭ R=200.00' Δ=13°42'34" L=25.00'
⑤ R=75.00' Δ=78°00'00" L=102.10'	⑩ R=230.00' Δ=01°20'45" L=5.40'	⑮ R=400.00' Δ=17°11'19" L=120.00'
		⑯ R=100.00' Δ=43°14'11" L=75.46'
		⑰ R=200.00' Δ=30°20'46" L=27.22'
		⑱ R=281.91' Δ=22°59'58" L=111.50'
		⑳ R=444.16' Δ=13°31'59" L=104.91'
		㉑ R=200.00' Δ=07°09'43" L=25.00'
		㉒ R=287.13' Δ=27°12'07" L=136.32'

COMPUTED P.A.C.  
DRAWN D.L.B.  
CHECKED KA  
COMMENTS \_\_\_\_\_  
APPROVED \_\_\_\_\_  
REVISION \_\_\_\_\_