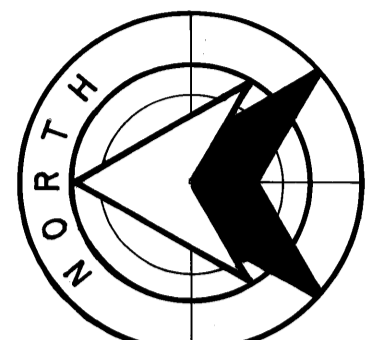
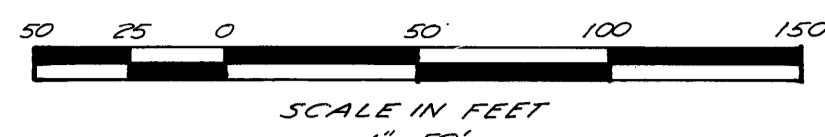
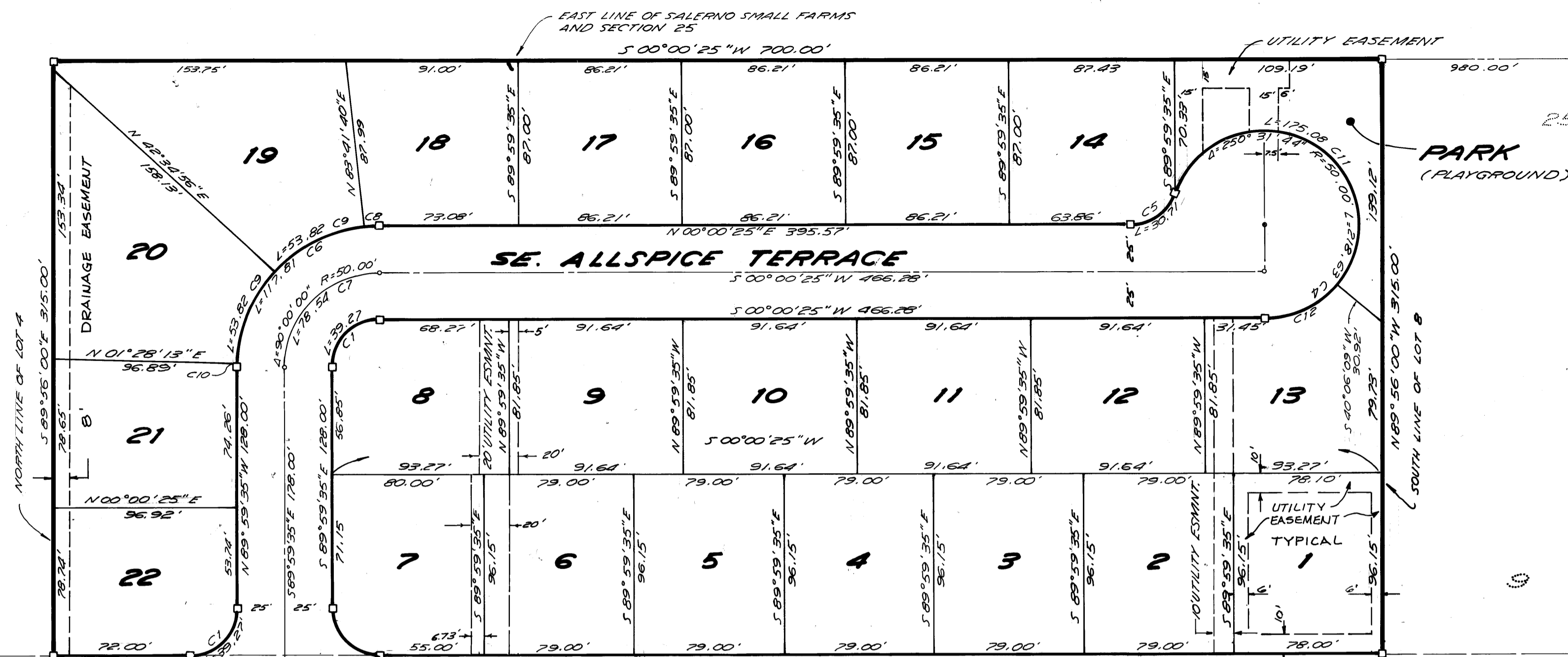


DIXIE PARK 4TH ADDITION
(PLAT BOOK 12, PAGE 22, PALM BEACH CO.)

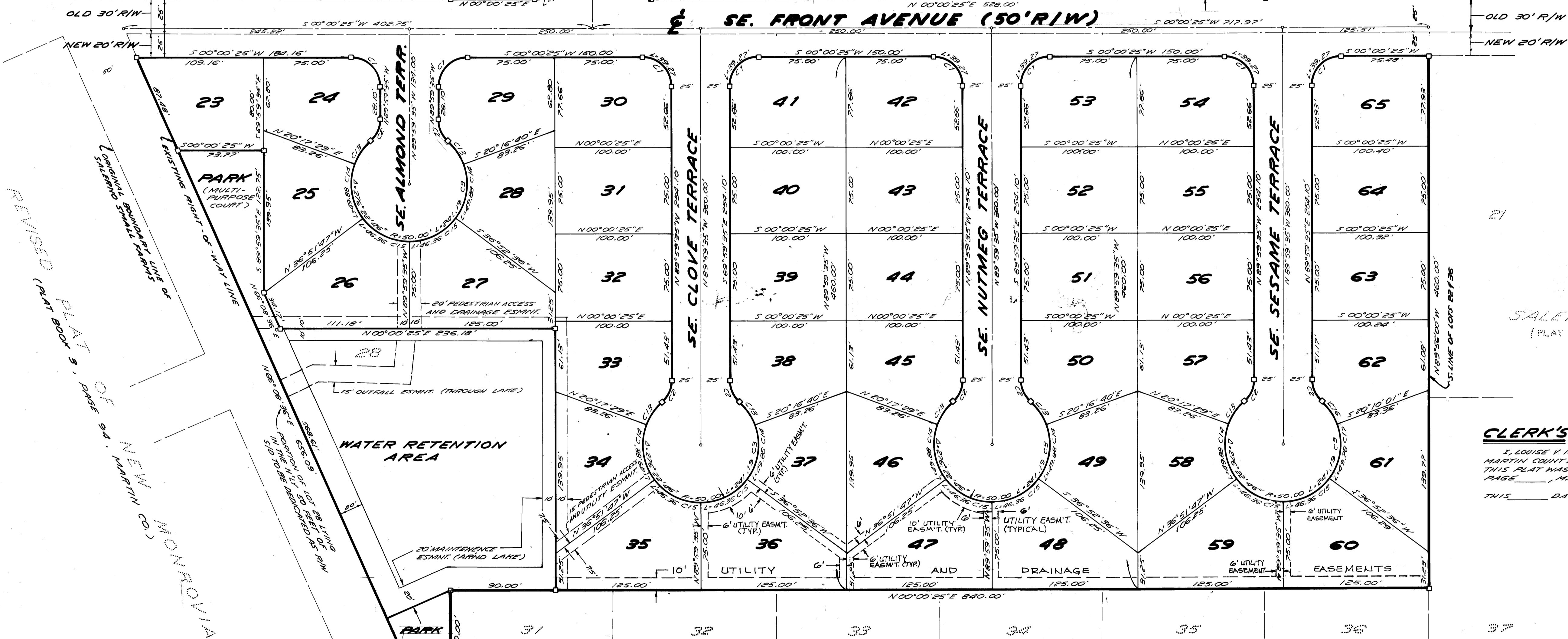


OCTOBER 15, 1986



CURVE DATA

NO	DELTA	RAD.	ARC	TAN.	CH.	CH. BRNG.
1	90°00'00"	25.00'	39.27'	25.00'	35.36'	
2	48°11'23"	25.00'	21.03'	11.18'	20.41'	
3	276°22'46"	30.00'	241.19'	44.72'	66.67'	
4	250°31'44"	30.00'	218.63'	70.71'	81.65'	N58°44'33"E
5	70°31'44"	25.00'	30.77'	17.68'	28.87'	N35°15'27"W
6	90°00'00"	25.00'	117.81'	75.00'	106.07'	N44°59'35"W
7	90°00'00"	30.00'	78.54'	50.00'	70.71'	S44°59'35"E
8	6°18'45"	75.00'	9.76'	4.14'	9.96'	N03°08'58"W
9	41°06'44"	75.00'	53.82'	28.13'	52.67'	
10	1°22'48"	75.00'	1.32'	0.36'	1.32'	N89°15'41"W
11	200°32'25"	30.00'	175.08'	274.80'	98.28'	S29°47'25"W
12	29°58'16"	30.00'	43.55'	23.26'	42.19'	N21°56'49"W
13	27°58'18"	30.00'	20.35'	12.82'	24.11'	
14	57°09'16"	30.00'	49.88'	25.24'	47.83'	
15	57°07'48"	30.00'	46.36'	25.00'	44.72'	
16	28°00'57"	30.00'	24.45'	12.82'	24.21'	S55°49'30"W
17	57°02'37"	30.00'	49.78'	27.17'	47.25'	N81°38'42"W



SAALERNO SMALL FARMS
(PLAT BOOK 2, PAGE 56)

CLERK'S RECORDING CERTIFICATE

I, LOUISE V. ISAACS, CLERK OF THE CIRCUIT COURT OF MARTIN COUNTY, FLORIDA, HEREBY CERTIFY THAT THIS PLAT WAS FILED FOR RECORD IN PLAT BOOK PAGE _____, MARTIN COUNTY, FLORIDA, PUBLIC RECORDS, THIS _____ DAY OF _____, 1986, FILE NO. _____

LOUISE V. ISAACS, CLERK
CIRCUIT COURT
MARTIN COUNTY, FLORIDA

BY: _____
DEPUTY CLERK

SALERNO TWIN VILLAS

A SUBDIVISION IN SECTION 25, TOWNSHIP 38 SOUTH, RANGE 41 EAST
MARTIN COUNTY, FLORIDA
A REPLAT OF A PART OF SAALERNO SMALL FARMS
PLAT BOOK 2, PAGE 56

JAMES A. KIRBY III
REGISTERED LAND SURVEYOR

JK
1919 ORANGE AVENUE
P.O. BOX 1906
FT. PIERCE FLA. 33450
(305) 464-9621