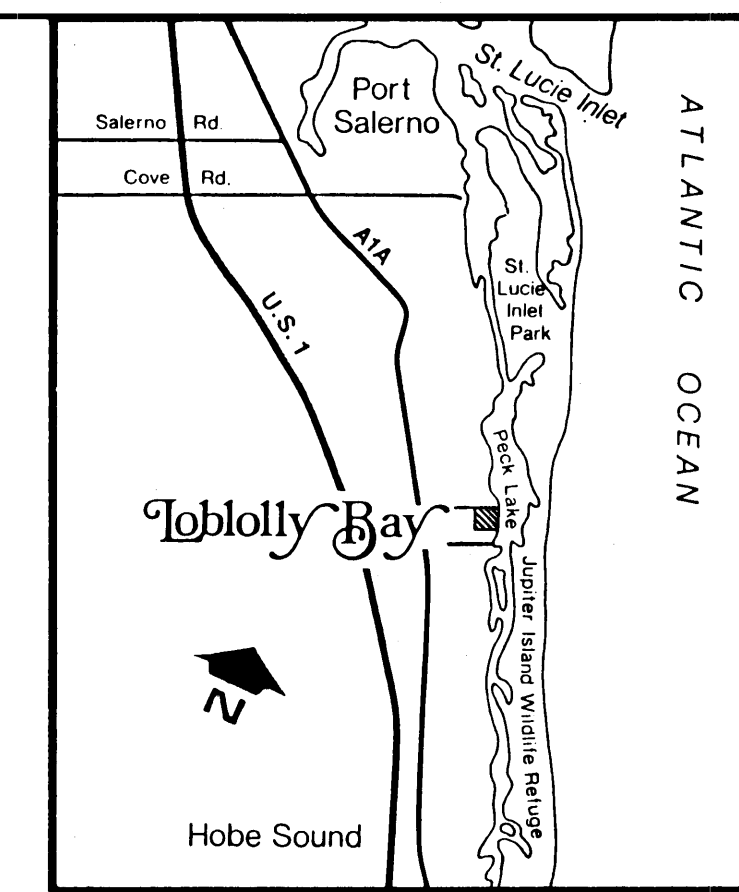


PLAT NO. 2, LOBLOLLY BAY, A P.U.D.

PHASES 16, 17, & 18

BEING A REPLAT OF A PORTION OF PARCELS "D" & "E", LOBLOLLY BAY, A P.U.D., RECORDED IN P.U.D. PLAT BOOK 1, AT PAGE 14, AND A PORTION OF LOT 33, GOMEZ GRANT, PLAT BOOK 1, AT PAGE 80, TOWNSHIP 39 SOUTH, RANGE 42 EAST, MARTIN COUNTY, FLORIDA

SHEET 3 OF 3

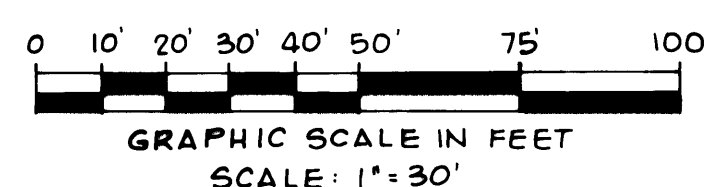
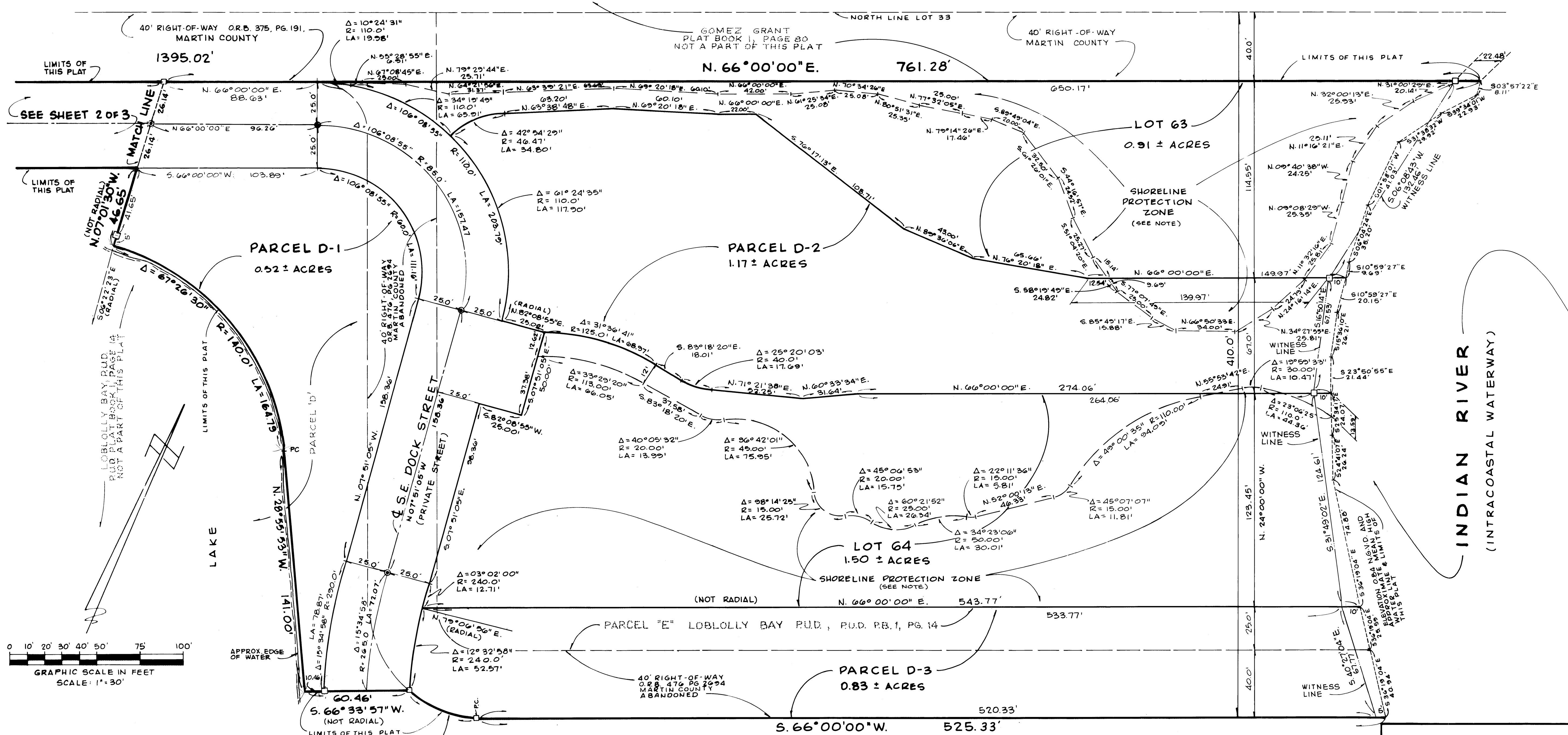


Marsha Stiller
I, *Marsha Stiller*, CLERK OF THE CIRCUIT COURT OF MARTIN COUNTY, FLORIDA, HEREBY CERTIFY THAT THIS PLAT WAS FILED FOR RECORD IN PLAT BOOK 10, PAGE 37, MARTIN COUNTY, FLORIDA, PUBLIC RECORDS, THIS _____, DAY OF _____, A.D., 1986.

Marsha Stiller
CLERK
CIRCUIT COURT
MARTIN COUNTY, FLORIDA

BY: _____
DEPUTY CLERK

FILE NO.: _____



R=65.0'
LA=41.68'
Δ=36°44'19"

NOTES

1. SET PERMANENT REFERENCE MONUMENTS (P.R.M.'S) ARE DESIGNATED THUS: □
2. SET PERMANENT CONTROL POINTS (P.C.P.'S) ARE DESIGNATED THUS: ⊙
3. BEARINGS CITED HEREIN ARE BASED ON AN ASSUMED BEARING OF SOUTH 66°00'00" WEST ALONG THE NORTH LINE OF PARCEL "D", ACCORDING TO THE PLAT OF LOBLOLLY BAY, A P.U.D., AS RECORDED IN P.U.D. PLAT BOOK 1, AT PAGE 14, IN AND FOR THE PUBLIC RECORDS OF MARTIN COUNTY, FLORIDA.
4. PHASE 1 INCLUDES PARCEL D-3; PHASE 16 CONSISTS OF LOTS 63 AND 64; PHASE 17 CONSISTS OF PARCEL D-1; PHASE 18 CONSISTS OF PARCEL D-2.
5. WITH RESPECT TO "SHORELINE PROTECTION ZONE" REFER TO PROTECTIVE COVENANTS OF LOBLOLLY BAY RECORDED CONCURRENTLY WITH THIS PLAT.

LOBLOLLY BAY, P.U.D. PLAT BOOK 1, PAGE 14 NOT A PART OF THIS PLAT

THIS INSTRUMENT PREPARED BY KENNETH L. SCRAPE, AT THE OFFICE OF KENNETH L. SCRAPE, INC., PROFESSIONAL LAND SURVEYORS, 11380 PROSPERITY FARMS ROAD, SUITE 109, PALM BEACH GARDENS, FLORIDA 33410

PLAT NO. 2, LOBLOLLY BAY, A P.U.D.		
MARTIN COUNTY, FLORIDA		
KENNETH L. SCRAPE, INC. PROFESSIONAL LAND SURVEYORS PALM BEACH GARDENS, FL., PH: (305) 627-3401		
FIELD: OSBORNE	OFFICE: TRISH	CK'D: K.S.
JOB NO: 860429	DATE: JUNE 1986	DWG. NO: C82-167
UF: 4	DC: 39	FB: MC III PG: 55 SHEET 3 OF 3