

I, LOUISE V. ISAACS,  
 CLERK OF THE CIRCUIT  
 COURT OF MARTIN COUNTY,  
 FLORIDA, HEREBY CERTIFY  
 THAT THIS PLAT WAS FILED  
 FOR RECORD IN PLAT  
 BOOK 17, PAGE 80  
 MARTIN COUNTY, FLORIDA,  
 PUBLIC RECORDS, THIS  
 DAY OF \_\_\_\_\_  
 A.D., 1986.  
Marsha Stiller, CLERK  
 CIRCUIT COURT  
 MARTIN COUNTY, FLORIDA  
 BY \_\_\_\_\_  
 DEPUTY CLERK  
 FILE NO. \_\_\_\_\_

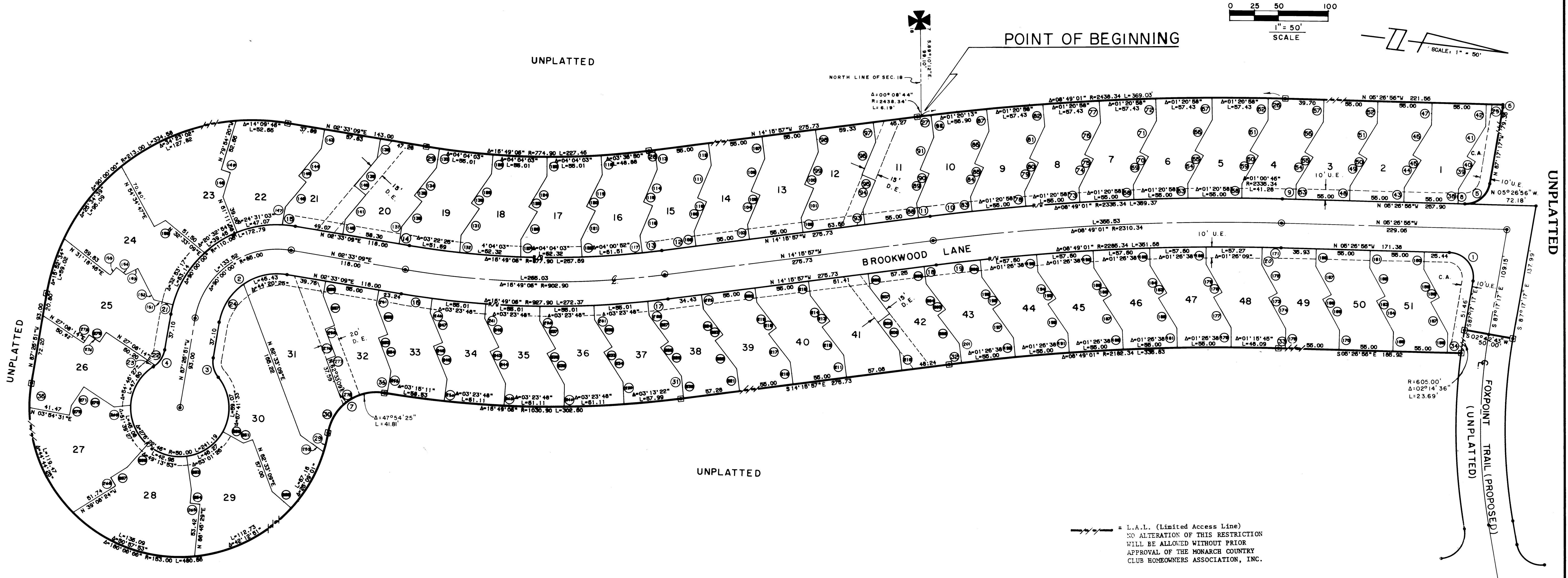
AUG, 1986

SHEET 3 OF 3

# PLAT NO. 20

## MARTIN DOWNS P.U.D.

LYING IN SECTIONS 7 & 18  
 TOWNSHIP 38 SOUTH, RANGE 41 EAST, MARTIN COUNTY, FLA.



**BEARING BASE:**  
 THE NORTH LINE OF SECTION 18 IS TAKEN TO BE S89° 10' 12" E  
 AND ALL BEARINGS SHOWN HEREON ARE RELATIVE THERETO.

- - DENOTES P.R.M. (PERMANENT REFERENCE MONUMENT)
- - DENOTES P.C.P. (PERMANENT CONTROL POINT)
- U.E. - UTILITY EASEMENT
- D.E. - DRAINAGE EASEMENT
- C.A. - COMMON AREA

LINDAHL, BROWNING FERRARI & HELLSTROM, INC.  
 Consulting Engineers, Planners & Surveyors  
 P.O. BOX 727 10 CENTRAL PARKWAY  
 JUPITER, FLORIDA 33458 SUITE 420  
 STUART, FLORIDA 33497

3 3