

# MARINER SANDS PLAT NO. 8

BEING A TRACT OF LAND LYING IN SECTION 31, TOWNSHIP 38 SOUTH, RANGE 42 EAST, MARTIN COUNTY, FLORIDA.

BEING A PART OF THE MARINER SANDS P.U.D.

I, Louise V. Isaacs, Clerk of the Circuit Court of Martin County, Florida, hereby certify that this plat was filed for record in Plat Book 10, Page 47, Martin County, Florida, public records this \_\_\_\_\_ day of \_\_\_\_\_, 1986.

LOUISE V. ISAACS, CLERK  
CIRCUIT COURT  
MARTIN COUNTY, FLORIDA

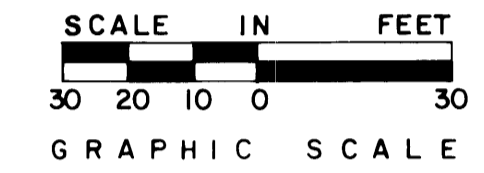
BY: \_\_\_\_\_  
Deputy Clerk

File No. \_\_\_\_\_

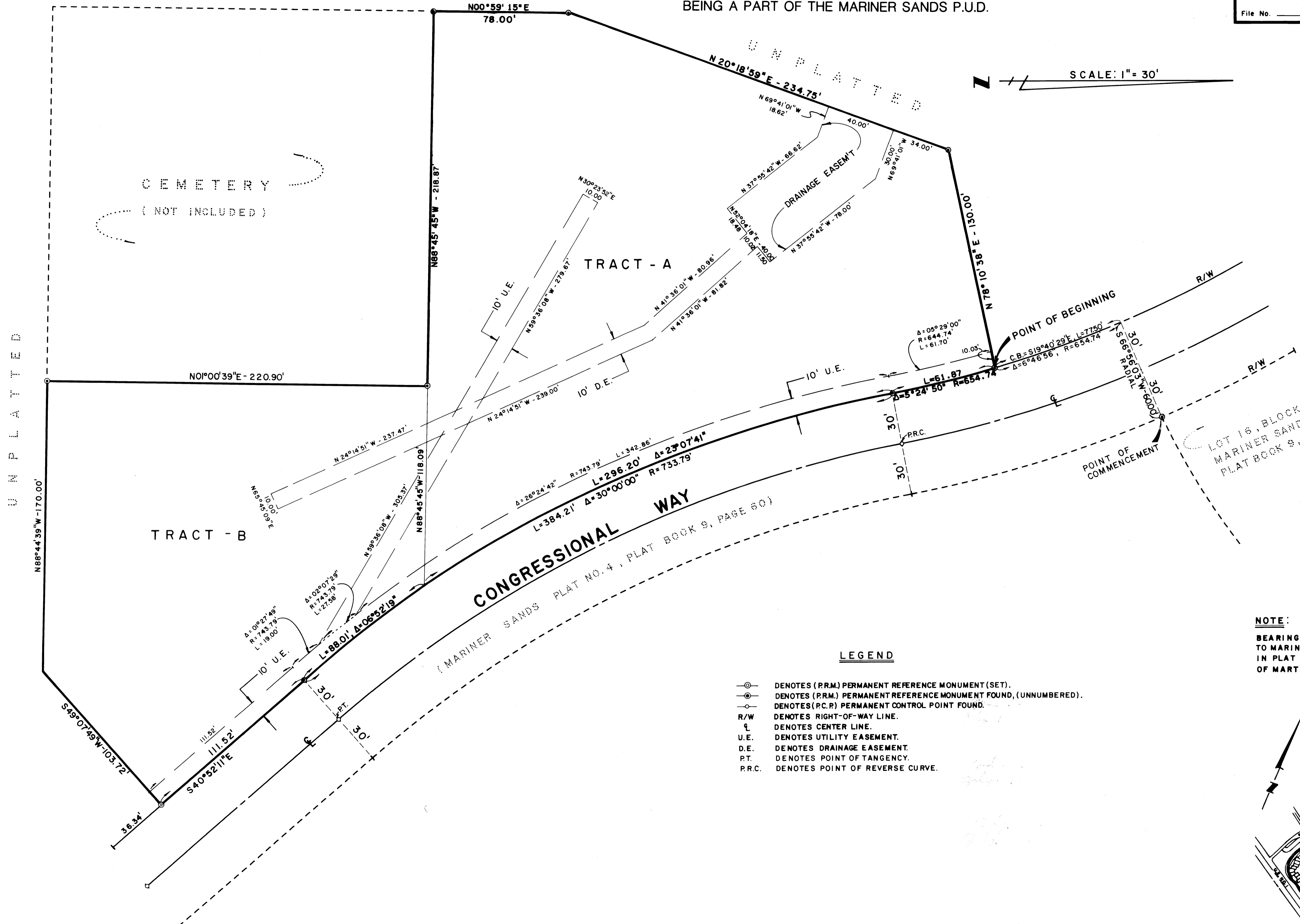
SHEET 2 OF 2 SHEETS

**Hutcheon Engineers**  
CIVIL ENGINEERS & SURVEYORS  
WEST PALM BEACH  
BELLE GLADE STUART

JULY 1986



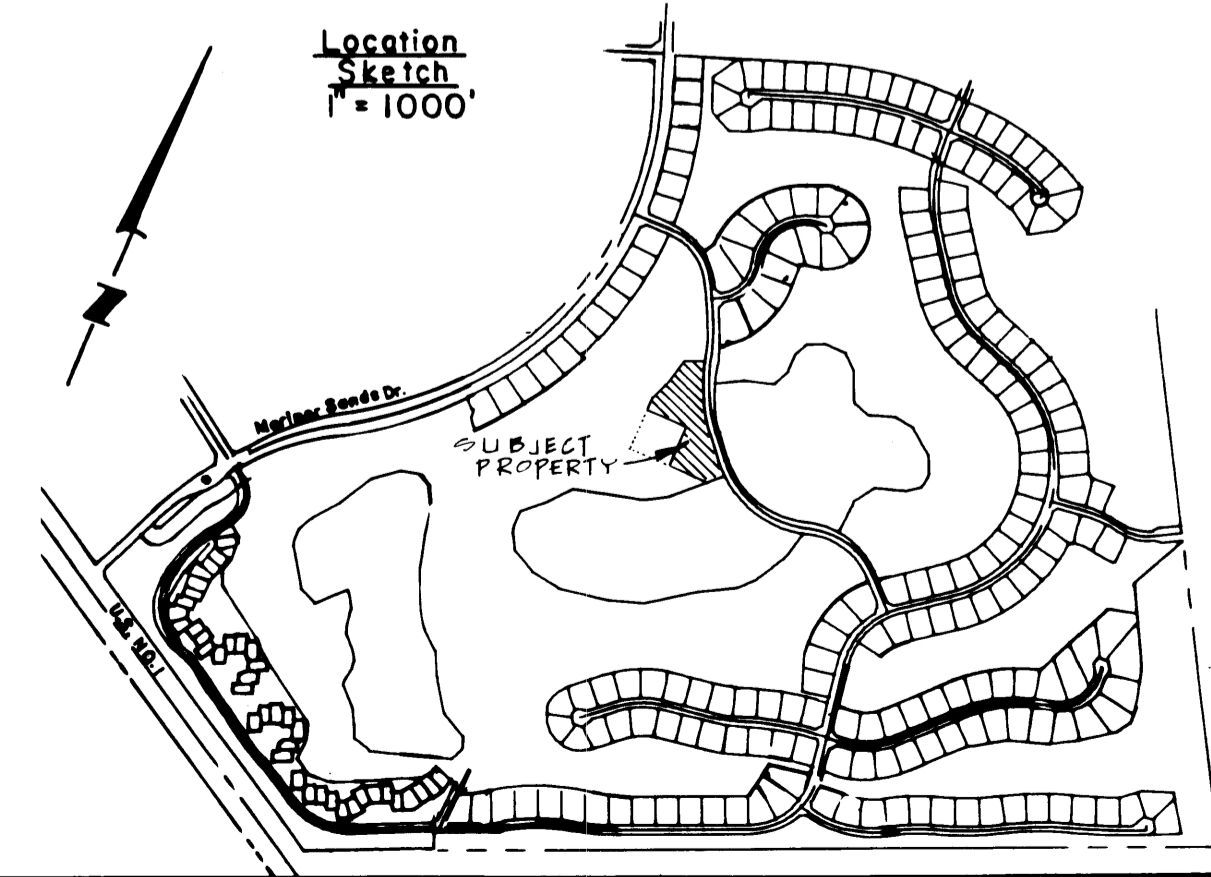
SCALE: 1" = 30'



LOT 16, BLOCK "2"  
MARINER SANDS PLAT NO. 4  
PLAT BOOK 9, PAGE 60

**NOTE:**  
BEARINGS SHOWN HEREON REFERENCED TO MARINER SANDS PLAT NO. 4 AS RECORDED IN PLAT BOOK 9, PAGE 60, PUBLIC RECORDS OF MARTIN COUNTY, FLORIDA.

- LEGEND**
- ⊙ DENOTES (P.R.M.) PERMANENT REFERENCE MONUMENT (SET).
  - ⊙ DENOTES (P.R.M.) PERMANENT REFERENCE MONUMENT FOUND, (UNNUMBERED).
  - ⊙ DENOTES (P.C.P.) PERMANENT CONTROL POINT FOUND.
  - R/W DENOTES RIGHT-OF-WAY LINE.
  - ⊥ DENOTES CENTER LINE.
  - U.E. DENOTES UTILITY EASEMENT.
  - D.E. DENOTES DRAINAGE EASEMENT.
  - PT. DENOTES POINT OF TANGENCY.
  - P.R.C. DENOTES POINT OF REVERSE CURVE.



UNPLATTED

UNPLATTED

CEMETERY  
(NOT INCLUDED)

TRACT - B

TRACT - A

CONGRESSIONAL WAY  
(MARINER SANDS PLAT NO. 4, PLAT BOOK 9, PAGE 60)

POINT OF BEGINNING

POINT OF COMMENCEMENT