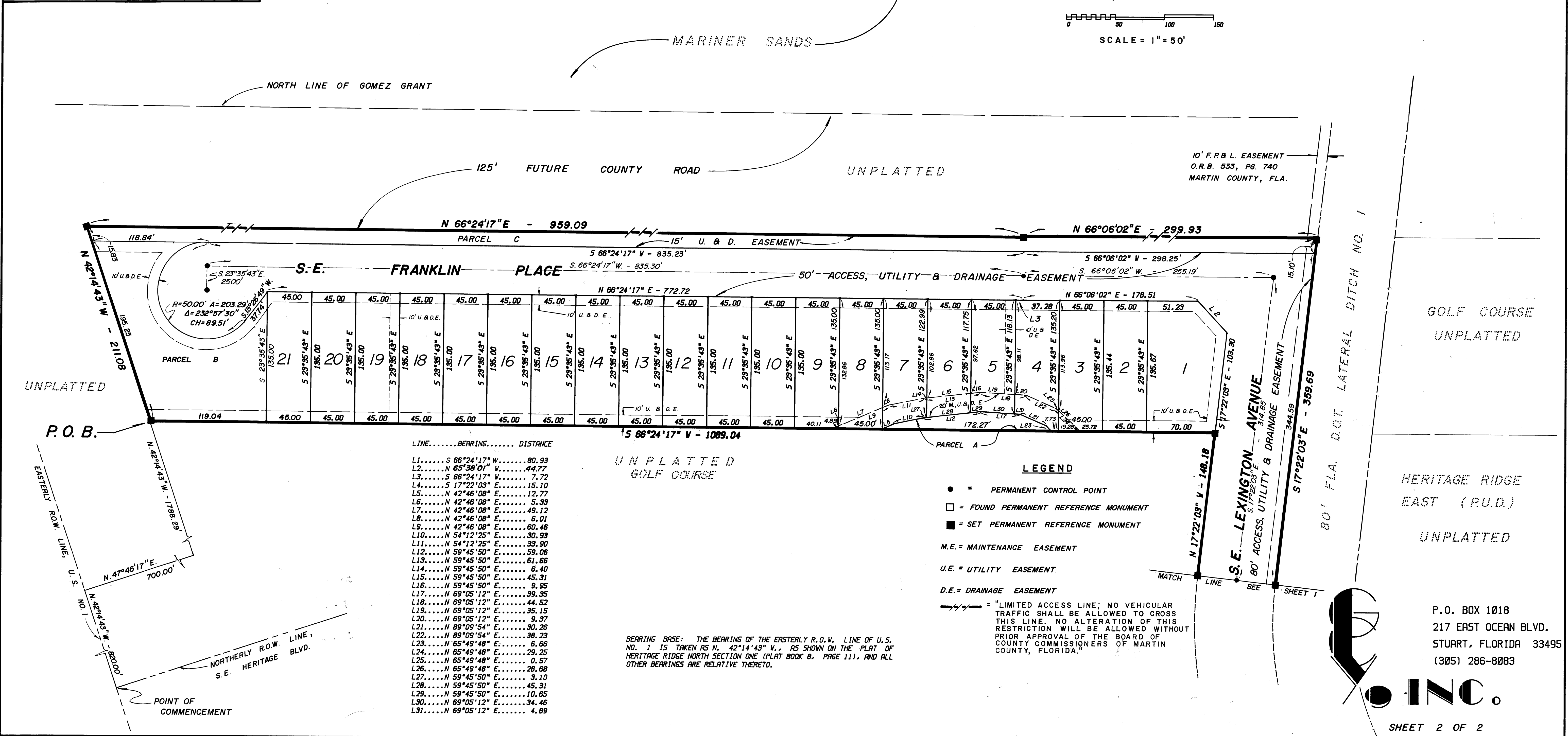
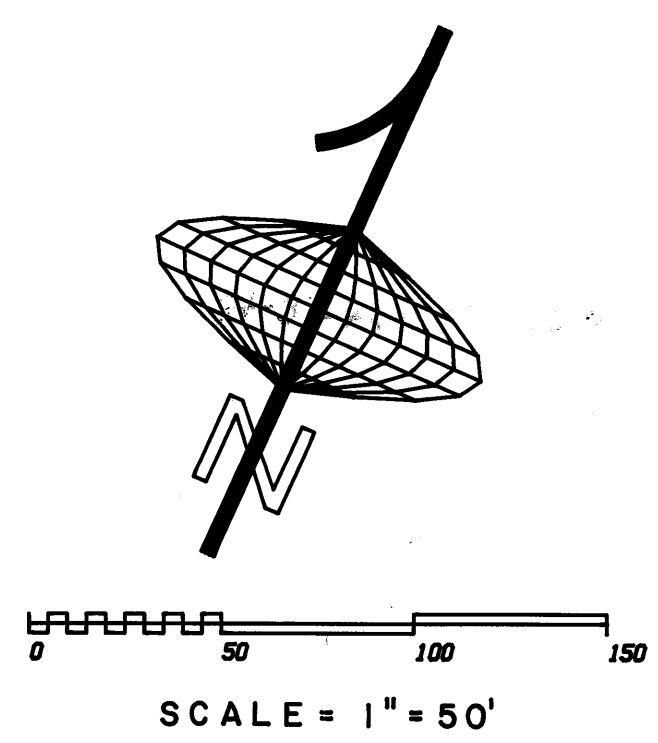


A PLAT OF
FRANKLIN WOOD
 AT HERITAGE RIDGE, A P.U.D.
 LOCATED IN THE GOMEZ GRANT, MARTIN COUNTY, FLORIDA
 AUGUST 1986

CLERK'S RECORDING CERTIFICATE
 I, LOUISE V. ISARCS, CLERK OF THE CIRCUIT COURT OF MARTIN COUNTY, FLORIDA, HEREBY CERTIFY THAT THIS PLAT WAS FILED FOR RECORD IN PLAT BOOK 10, PAGE 44, MARTIN COUNTY, FLORIDA, PUBLIC RECORDS THIS DAY OF 1986.
 LOUISE V. ISARCS, CLERK OF THE CIRCUIT COURT MARTIN COUNTY, FLORIDA.
 FILE NUMBER: _____ BY: _____ DEPUTY CLERK
 SUBDIVISION PARCEL CONTROL NUMBER _____



LINE.....BEARING..... DISTANCE

L1.....	S 66°24'17" W.....	80.99
L2.....	N 65°58'01" W.....	44.77
L3.....	S 66°24'17" W.....	7.72
L4.....	S 17°22'03" E.....	15.10
L5.....	N 42°46'08" E.....	12.77
L6.....	N 42°46'08" E.....	5.33
L7.....	N 42°46'08" E.....	49.12
L8.....	N 42°46'08" E.....	6.01
L9.....	N 42°46'08" E.....	60.46
L10.....	N 54°12'25" E.....	30.93
L11.....	N 54°12'25" E.....	39.90
L12.....	N 59°45'50" E.....	59.06
L13.....	N 59°45'50" E.....	61.66
L14.....	N 59°45'50" E.....	6.40
L15.....	N 59°45'50" E.....	45.31
L16.....	N 59°45'50" E.....	9.95
L17.....	N 69°05'12" E.....	39.35
L18.....	N 69°05'12" E.....	44.52
L19.....	N 69°05'12" E.....	35.15
L20.....	N 69°05'12" E.....	9.37
L21.....	N 89°09'54" E.....	30.26
L22.....	N 89°09'54" E.....	38.23
L23.....	N 65°49'48" E.....	6.66
L24.....	N 65°49'48" E.....	29.25
L25.....	N 65°49'48" E.....	0.57
L26.....	N 65°49'48" E.....	28.68
L27.....	N 59°45'50" E.....	3.10
L28.....	N 59°45'50" E.....	45.31
L29.....	N 59°45'50" E.....	10.65
L30.....	N 69°05'12" E.....	34.46
L31.....	N 69°05'12" E.....	4.89

LEGEND

- = PERMANENT CONTROL POINT
- = FOUND PERMANENT REFERENCE MONUMENT
- = SET PERMANENT REFERENCE MONUMENT
- M.E. = MAINTENANCE EASEMENT
- U.E. = UTILITY EASEMENT
- D.E. = DRAINAGE EASEMENT
- = LIMITED ACCESS LINE; NO VEHICULAR TRAFFIC SHALL BE ALLOWED TO CROSS THIS LINE. NO ALTERATION OF THIS RESTRICTION WILL BE ALLOWED WITHOUT PRIOR APPROVAL OF THE BOARD OF COUNTY COMMISSIONERS OF MARTIN COUNTY, FLORIDA.

P.O. BOX 1018
 217 EAST OCEAN BLVD.
 STUART, FLORIDA 33495
 (305) 286-8083

