

PLAT OF HILLCREST

TOWN OF SEWALL'S POINT, FLORIDA

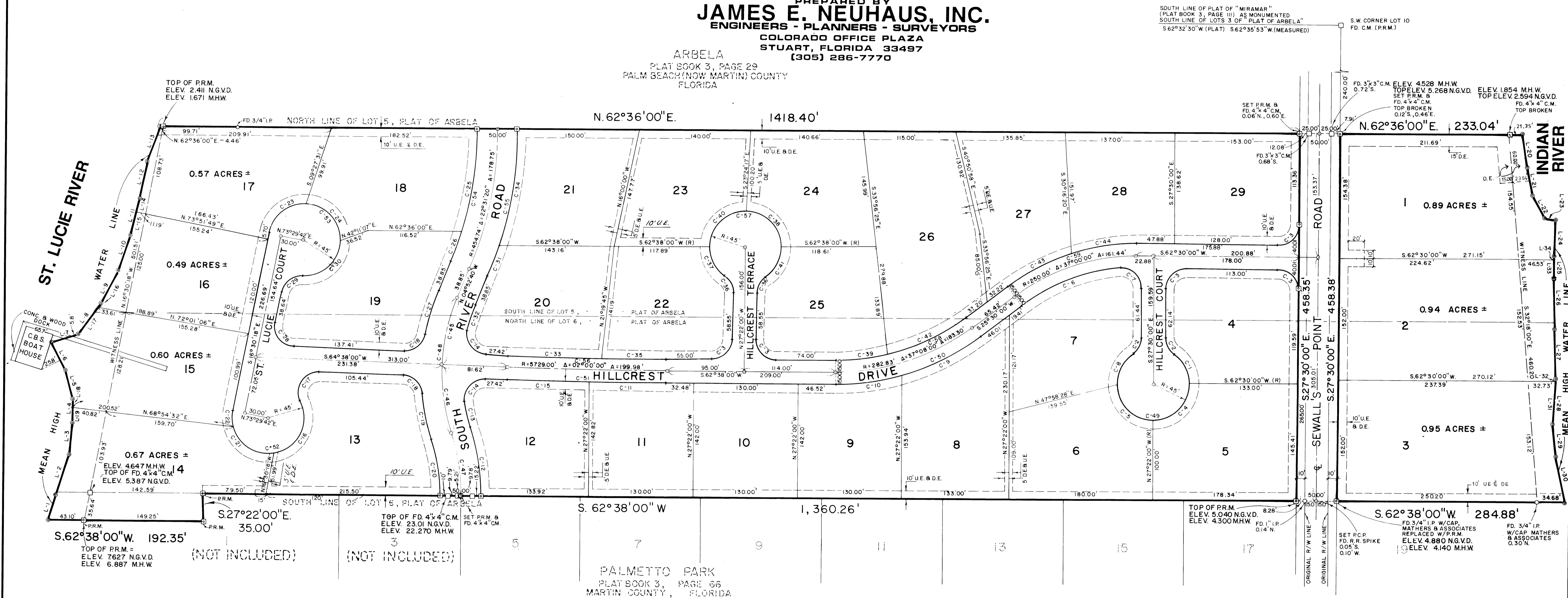
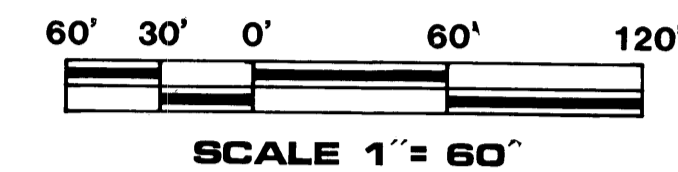
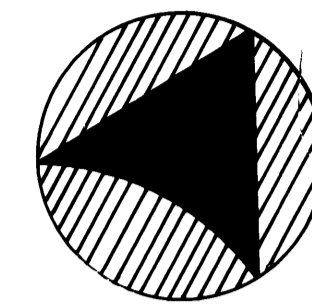
A PARCEL OF LAND LYING IN SECTION 1, TOWNSHIP 38 SOUTH, RANGE 41 EAST

BEING A REPLAT OF
 LOTS 5 AND 6 OF THE PLAT OF ARBELA, PLAT BOOK 3, PAGE 29,
 PUBLIC RECORDS OF PALM BEACH (NOW MARTIN) COUNTY, FLORIDA
 AND A PORTION OF THE PLAT OF PALMETTO PARK (NOT INCLUDED), PLAT BOOK 3,
 PAGE 66, PUBLIC RECORDS OF MARTIN COUNTY, FLORIDA

PREPARED BY
JAMES E. NEUHAUS, INC.
 ENGINEERS - PLANNERS - SURVEYORS

ARBELA
 PLAT BOOK 3, PAGE 29
 PALM BEACH (NOW MARTIN) COUNTY
 FLORIDA

COLORADO OFFICE PLAZA
 STUART, FLORIDA 33497
 (305) 286-7770



CURVE TABLE

CURVE	DELTA	RADIUS	ARC	TANGENT	CHORD
C-1	55°09'00"	45.00	43.31	23.50	41.66
C-2	55°09'00"	25.00	24.06	13.06	23.15
C-3	90°00'00"	25.00	39.27	35.36	35.00
C-4	90°00'00"	45.00	70.79	45.10	63.11
C-5	89°07'36"	45.00	70.00	44.32	63.15
C-6	52°19'22"	235.00	132.57	68.10	130.82
C-7	94°40'57"	45.00	41.31	27.13	36.77
C-8	55°53'24"	45.00	43.90	23.87	42.18
C-9	20°51'23"	297.83	108.41	54.81	107.82
C-10	16°16'13"	297.83	84.61	42.99	84.33
C-11	00°58'22"	5744.00	97.53	48.77	97.53
C-12	18°29'20"	270.76	87.37	44.07	86.99
C-13	08°30'10"	217.61	32.29	16.18	32.26
C-14	101°59'10"	25.00	44.30	30.86	38.85
C-15	101°01'38"	5744.00	102.97	51.49	102.97
C-16	106°18'06"	45.00	83.49	60.05	72.02
C-17	120°46'11"	25.00	52.70	43.98	43.17
C-18	82°08'35"	25.00	35.84	21.79	32.85
C-19	12°37'55"	267.61	59.00	29.62	58.88
C-20	18°29'20"	220.76	71.24	35.93	70.93
C-21	89°07'36"	45.00	70.00	44.32	63.15
C-22	24°12'15"	45.00	19.01	9.65	18.87
C-23	81°52'03"	45.00	64.30	39.03	56.97
C-24	89°07'36"	45.00	70.00	44.32	63.15
C-25	17°25'59"	429.74	130.75	65.89	130.25
C-26	05°05'22"	429.74	36.17	19.10	36.16
C-27	12°37'55"	267.61	59.00	29.62	58.88
C-28	98°51'42"	25.00	43.14	29.20	37.98
C-29	81°47'12"	25.00	35.69	21.65	32.73

CURVE TABLE

CURVE	DELTA	RADIUS	ARC	TANGENT	CHORD
C-30	90°47'12"	45.00	71.31	45.63	64.08
C-31	04°57'15"	479.74	41.52	20.77	41.50
C-32	08°30'10"	217.61	32.29	16.18	32.26
C-33	01°10'13"	5714.00	116.72	58.36	116.72
C-34	17°53'15"	479.74	147.06	74.11	146.49
C-35	00°49'47"	5714.00	82.74	41.37	82.74
C-36	55°09'00"	25.00	24.06	13.06	23.15
C-37	55°09'00"	45.00	43.31	23.50	41.66
C-38	90°52'24"	45.00	45.00	45.00	64.12
C-39	14°01'53"	267.83	65.59	32.96	65.43
C-40	89°07'36"	45.00	70.00	44.32	63.15
C-41	55°09'00"	45.00	43.31	23.50	41.66
C-42	23°06'07"	267.83	107.99	54.74	107.26
C-43	19°01'35"	265.00	88.00	44.41	87.60
C-44	17°58'22"	265.00	83.15	41.91	82.79
C-45	20°29'20"	242.61	86.76	43.85	86.29
C-46	20°29'20"	242.61	86.76	43.85	86.29
C-47	18°29'20"	245.76	79.30	40.00	78.96
C-48	40°58'14"	242.61	173.32	90.65	169.84
C-49	290°18'01"	45.00	228.00	51.43	228.00
C-50	37°08'00"	297.83	195.02	100.04	189.66
C-51	02°00'00"	5744.00	200.30	100.26	200.49
C-52	21°93'58"	45.00	172.50	84.67	169.84
C-53	261°47'12"	45.00	205.61	68.03	205.61
C-54	22°31'20"	429.74	168.92	85.57	167.84
C-55	22°31'20"	429.74	168.92	85.57	167.84
C-56	02°00'00"	5714.00	199.46	99.74	199.46
C-57	290°18'00"	45.00	228.00	51.43	228.00
C-58	37°08'00"	267.83	173.32	89.96	173.32
C-59	37°00'00"	265.00	171.13	86.67	168.17

LINE TABLE

LINE	BEARING	DISTANCE
1	M10°-45'-39"W	32.99 FEET
2	M10°-43'-39"W	53.22 FEET
3	M29°-09'-42"W	20.58 FEET
4	M29°-09'-42"W	37.66 FEET
5	M41°-14'-55"W	37.22 FEET
6	M34°-48'-11"W	37.66 FEET
7	M43°-39'-25"E	34.52 FEET
8	M07°-25'-36"E	44.71 FEET
9	M00°-00'-00"E	45.00 FEET
10	M08°-59'-48"W	45.53 FEET
11	M12°-54'-56"W	47.62 FEET
12	M16°-34'-04"W	46.21 FEET
13	M09°-16'-24"W	47.13 FEET
14	M12°-54'-56"W	14.88 FEET
15	M12°-54'-56"W	32.74 FEET
16	M07°-25'-36"E	4.72 FEET

LINE TABLE

LINE	BEARING	DISTANCE
17	M07°-25'-36"E	44.71 FEET
18	M29°-09'-42"W	9.43 FEET
19	M29°-09'-42"W	20.58 FEET
20	M37°-26'-30"E	40.57 FEET
21	M39°-36'-45"E	35.98 FEET
22	M54°-08'-46"E	31.06 FEET
23	M72°-04'-00"E	14.34 FEET
24	M26°-31'-20"E	44.94 FEET
25	M23°-19'-28"E	28.82 FEET
26	M29°-01'-32"E	61.75 FEET
27	M26°-49'-17"E	61.59 FEET
28	M23°-47'-55"E	57.37 FEET
29	M23°-56'-12"E	40.77 FEET
30	M39°-40'-24"E	59.33 FEET
31	M23°-47'-55"E	34.10 FEET
32	M23°-47'-55"E	3.27 FEET
33	M23°-19'-28"E	25.51 FEET
34	M29°-19'-28"E	3.31 FEET

SURVEY NOTES

- INDICATES SET IRON PIPE WITH CAP, HOLLY & WEBER, INC.
- INDICATES SET PERMANENT REFERENCE MONUMENT. (P.R.M.)
- INDICATES FOUND 4" x 4" CONCRETE MONUMENT.
- INDICATES PERMANENT CONTROL POINT. (P.C.P.)
- INDICATES UTILITY EASEMENT.
- INDICATES DRAINAGE EASEMENT.
- INDICATES RADIAL LINE.
- THERE WILL BE NO LOT SPLITS EXCEPT TO CREATE LARGER LOTS.
- BEARINGS SHOWN HEREON ARE RELATIVE TO PLAT OF PALMETTO PARK, AS RECORDED IN PLAT BOOK 3, PAGE 66, PUBLIC RECORDS OF PALM BEACH COUNTY, FLORIDA.
- THERE SHALL BE NO BUILDINGS OR ANY KIND OF CONSTRUCTION OR TREES OR SHRUBS PLACED ON DRAINAGE EASEMENTS.
- THERE SHALL BE NO BUILDINGS OR OTHER STRUCTURES PLACED ON UTILITY EASEMENTS.
- THE MEAN HIGH WATER LINE SHOWN HEREON HAS BEEN LOCATED IN ACCORDANCE WITH THE PROCEDURES AND REGULATIONS ESTABLISHED BY THE DEPARTMENT OF NATURAL RESOURCES, BUREAU OF COASTAL AND LAND BOUNDARIES, AND IS ON FILE WITH SAID AGENCY FILE #5531 AND FLORIDA STATUTES, CHAPTER 177, PART 11, FLORIDA ADMINISTRATIVE RULE: SECTION 16-5.
- NGVD ELEVATIONS SHOWN HEREON WERE ESTABLISHED USING THE FOLLOWING BENCHMARK: USC & GS Q236 1965 ELEVATION 4.104.