

PIPER'S LANDING PLAT NO. 6

I, Louise V. Isaacs, Clerk of the Circuit Court of Martin County, Florida, hereby certify that this plat was filed for record in Plat Book 10, Page 31, Martin County, Florida, public records, this _____ day of _____, 1986

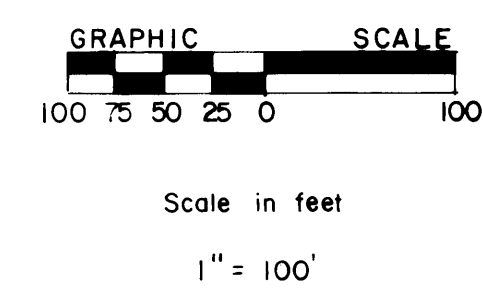
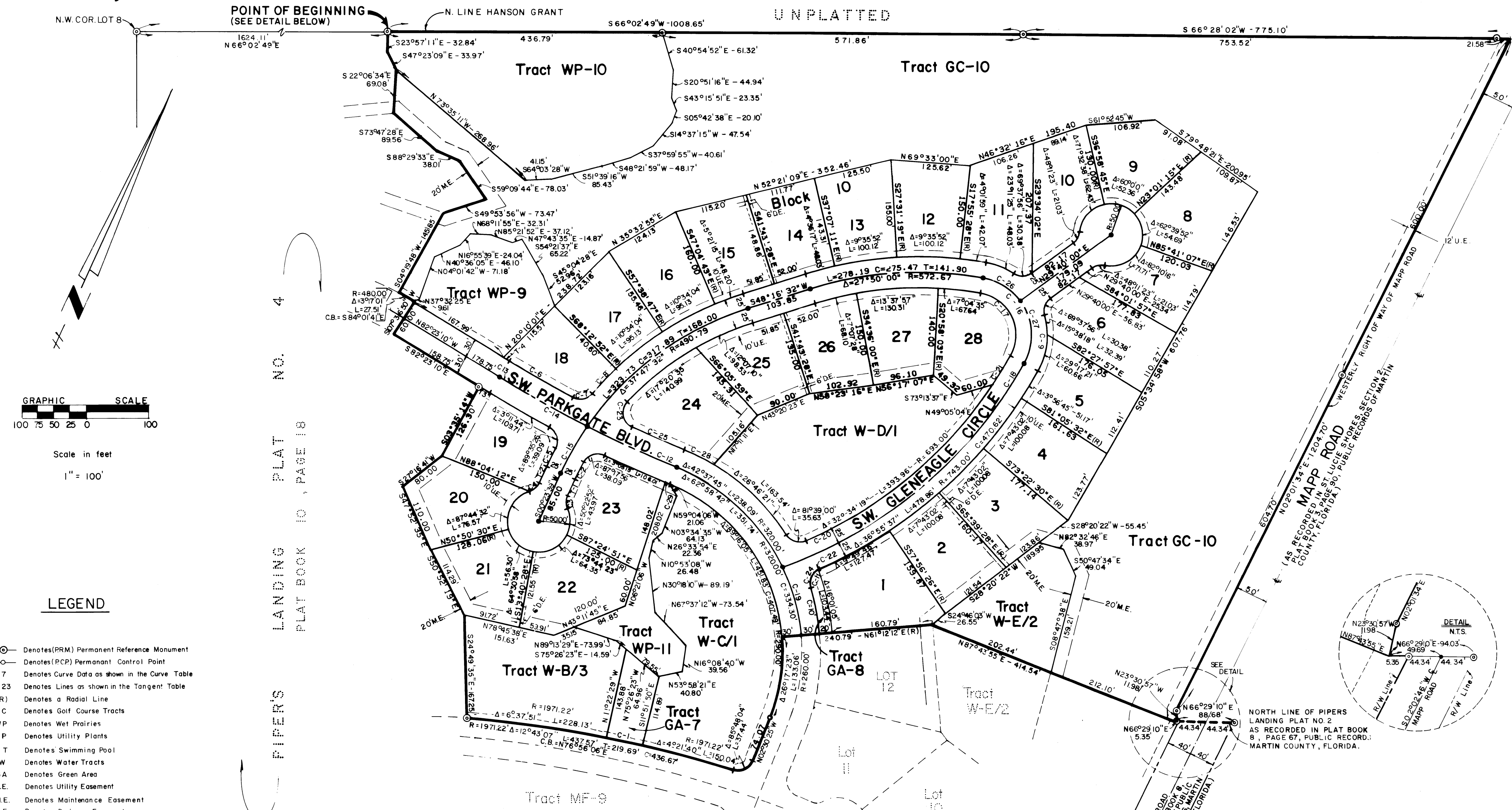
LOUISE V. ISAACS, CLERK
CIRCUIT COURT
MARTIN COUNTY, FLORIDA

BY: _____
Deputy Clerk

File No. _____

JULY 1986
SHEET 2 OF 2 SHEETS

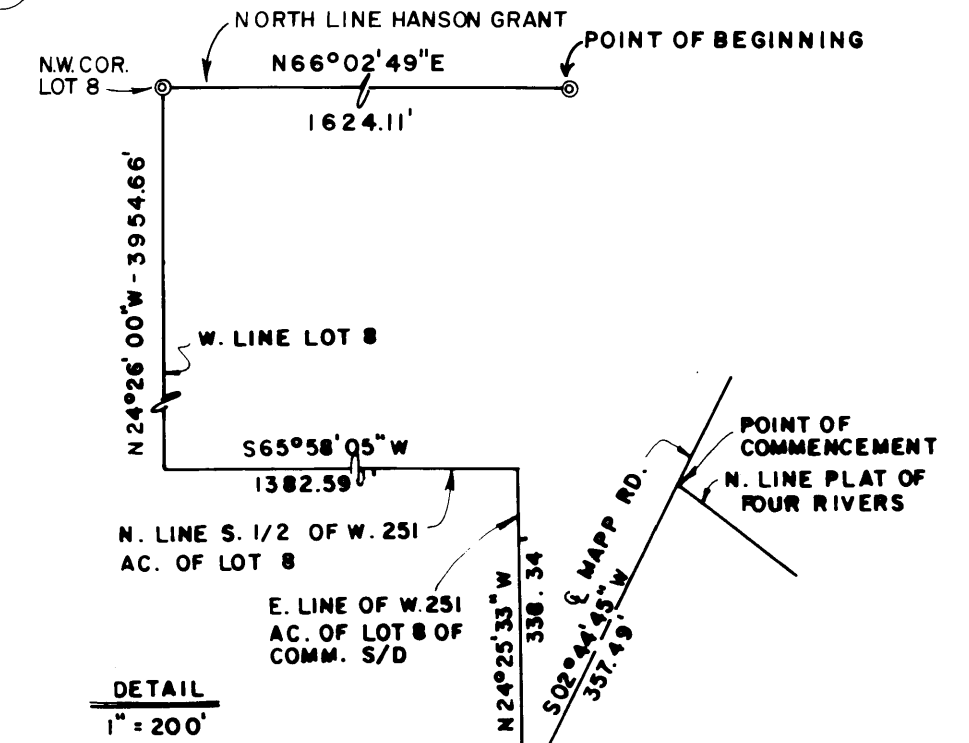
Hutcheon Engineers
CIVIL ENGINEERS & SURVEYORS
WEST PALM BEACH
BELLE GLADE STUART



LEGEND

- ⊙ Denotes (PRM) Permanent Reference Monument
- Denotes (PCP) Permanent Control Point
- C7 Denotes Curve Data as shown in the Curve Table
- T23 Denotes Lines as shown in the Tangent Table
- (R) Denotes a Radial Line
- WP Denotes Golf Course Tracts
- GC Denotes Wet Prairies
- UP Denotes Utility Plants
- P Denotes Swimming Pool
- W Denotes Water Tracts
- GA Denotes Green Area
- UE Denotes Utility Easement
- M.E. Denotes Maintenance Easement
- D.E. Denotes Drainage Easement

NOTE:
1.) ALL RETURN RADII 25'
2.) BEARINGS HEREON REFERENCED TO PIPERS LANDING PLAT NO. 2 AS RECORDED IN PLAT BOOK 8, PAGE 67, PUBLIC RECORDS MARTIN COUNTY, FLORIDA.



CURVE TABLE				
NO.	DELTA	LENGTH	RADIUS	CHORD
1	10°43'36"	59.41'	1971.22'	59.41'
2	30°50'54"	31.28'	465.79'	31.28'
3	48°11'23"	21.03'	25.00'	20.41'
4	48°11'23"	21.03'	25.00'	20.41'
5	30°36'53"	32.54'	515.79'	32.54'
6	30°30'55"	117.01'	1907.12'	116.99'
7	78°21'31"	34.19'	25.00'	31.59'
8	60°24'45"	54.43'	515.79'	54.40'
9	44°55'39"	93.05'	118.66'	90.68'
10	12°14'59"	74.83'	350.00'	74.69'
11	82°56'06"	36.19'	25.00'	33.11'
12	40°38'00"	156.65'	1937.12'	156.61'
13	40°45'19"	160.78'	1937.12'	160.73'
14	9°23'20"	317.43'	1937.12'	317.07'
15	10°05'20"	86.42'	490.79'	86.31'
16	108°51'11"	177.94'	93.66'	152.36'
17	108°51'11"	130.44'	68.66'	111.69'
18	41°05'48"	515.00'	718.00'	504.03'
19	20°20'57"	113.65'	320.00'	113.06'
20	37°00'59"	447.72'	693.00'	439.97'
21	4°26'41"	53.76'	693.00'	53.74'
22	6°21'00"	2.77'	25.00'	2.77'
23	107°51'43"	47.06'	25.00'	40.42'
24	76°35'07"	33.42'	25.00'	30.98'
25	2°43'34"	90.74'	1907.12'	90.73'
26	43°33'28"	71.20'	93.66'	69.50'
27	65°17'42"	106.74'	93.66'	101.55'
28	8°37'51"	52.72'	350.00'	52.67'
29	0°13'44"	7.85'	1967.12'	7.85'

TANGENT TABLE		
NO.	BEARING	DISTANCE
1	S 00°23'39" W	29.09'
2	N 00°23'39" E	29.09'
3	N 82°23'10" W	20.00'
4	S 82°23'10" E	10.76'