

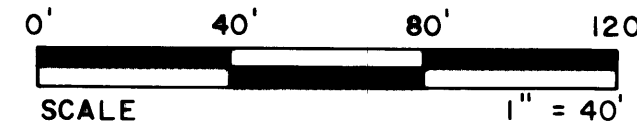
A PLAT OF JUPITER HILLS VILLAGE

PHASE IV

LYING IN SECTION 24, TOWNSHIP 40 SOUTH, RANGE 42 EAST,
MARTIN COUNTY, FLORIDA

MARCH, 1986

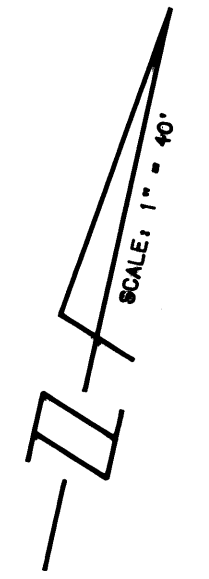
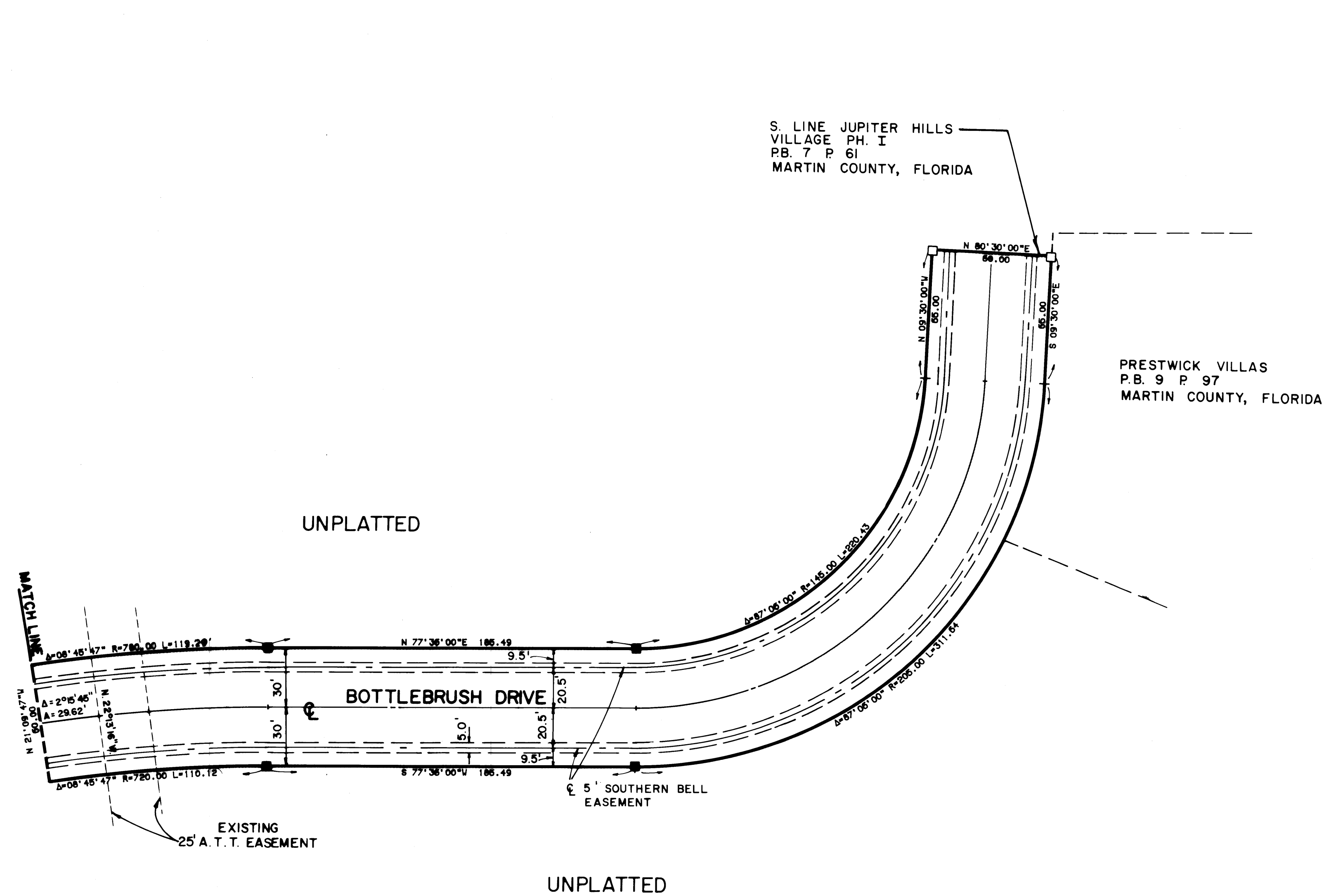
SHEET 4 of 4



I, LOUISE V. ISAACS,
CLERK OF THE CIRCUIT COURT
OF MARTIN COUNTY, FLORIDA,
HEREBY CERTIFY THAT THIS
PLAT WAS FILED FOR RECORD
IN PLAT BOOK 10, PAGE 32
MARTIN COUNTY, FLORIDA,
PUBLIC RECORDS, THIS
DAY OF _____, 1986.

LOUISE V. ISAACS, CLERK
CIRCUIT COURT
MARTIN COUNTY, FLORIDA

BY: _____
FILE NO. _____



■ DENOTES SET P.R.M. (PERMANENT REFERENCE MONUMENT)
□ " FOUND " " " " " "

LINDAHL, BROWNING, FERRARI & HELLSTROM, INC.
Consulting Engineers, Planners & Surveyors
JUPITER, FLORIDA STUART, FLORIDA
FORT PIERCE, FLORIDA

4 4