

A PLAT OF JUPITER HILLS VILLAGE

MARCH, 1986

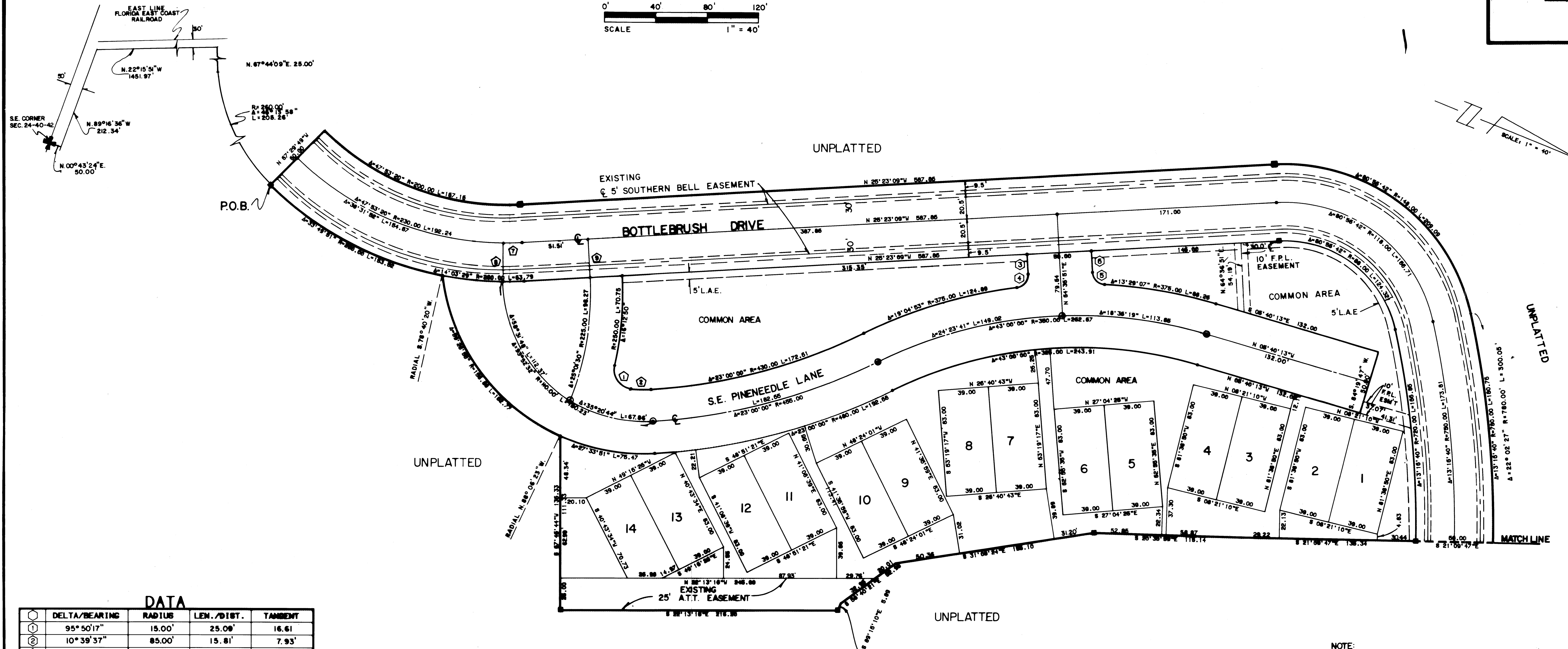
PHASE IV
LYING IN SECTION 24, TOWNSHIP 40 SOUTH, RANGE 42 EAST,
MARTIN COUNTY, FLORIDA

SHEET 3 of 4

I, LOUISE V. ISAACS,
CLERK OF THE CIRCUIT COURT
OF MARTIN COUNTY, FLORIDA,
HEREBY CERTIFY THAT THIS
PLAT WAS FILED FOR RECORD
IN PLAT BOOK 10, PAGE 11,
MARTIN COUNTY, FLORIDA,
PUBLIC RECORDS, THIS
DAY OF _____, 1986

LOUISE V. ISAACS, CLERK
CIRCUIT COURT
MARTIN COUNTY, FLORIDA

BY: _____
FILE NO. _____



DATA

Δ	DELTA/BEARING	RADIUS	LEN./DIST.	TANGENT
①	95° 50' 17"	15.00'	25.08'	16.61
②	10° 39' 37"	85.00'	15.81'	7.93'
③	S 64° 36' 51" W		15.61	
④	85° 47' 48"	10.00	14.97	9.29
⑤	83° 46' 11"	10.00	14.62	8.97
⑥	S 64° 36' 51" W		16.85	
⑦	03° 35' 28"	230.00'	14.42	7.21
⑧	N. 68° 12' 19" E.		28.76'	
⑨	N. 64° 36' 51" E.		30.00'	

NOTE:
TIES TO LOTS ARE RADIAL OR PERPENDICULAR
UNLESS OTHERWISE NOTED.
■—DENOTES SET P.R.M. (PERMANENT REFERENCE MONUMENT)
⊙—DENOTES SET P.C.P. (PERMANENT CONTROL POINT)
L.A.E.—DENOTES LIMITED ACCESS EASEMENT

LINDBALE, BROWNING, FERRARI & HELLSTROM, INC. CIVIL ENGINEERS, PLANNERS & SURVEYORS JUPITER, FLORIDA 33408 STUART, FLORIDA 33984 FORT PIERCE, FLORIDA 33904	3	4
---	---	---