

THE JENSEN BEACH CLUB

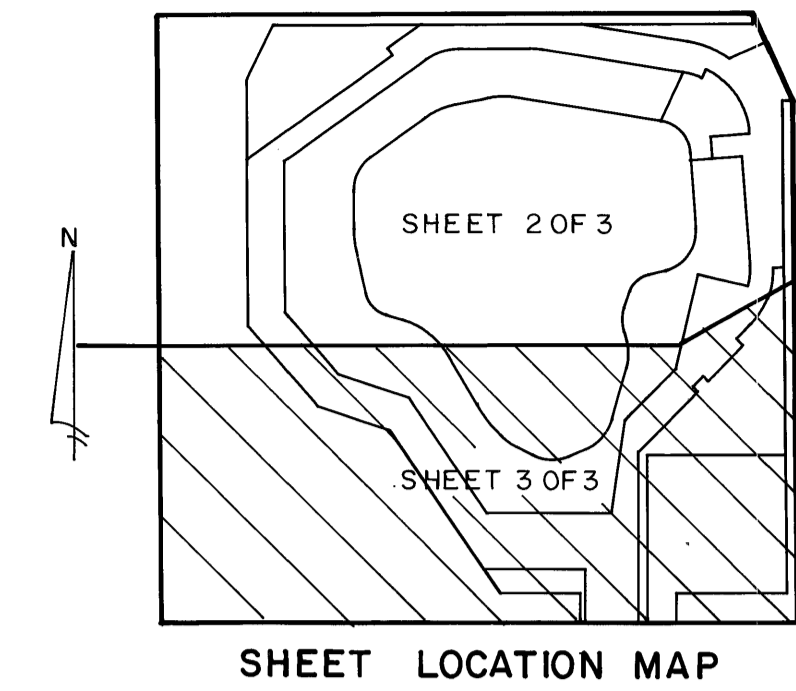
A PORTION OF JENSEN BEACH CLUB P.U.D.

SITUATE IN SECTION 13, TOWNSHIP 37 SOUTH, RANGE 41 EAST MARTIN COUNTY, FLORIDA.

MARCH 1986

SHEET 3 OF 3

| NO. | DELTA | RADIUS | LENGTH |
|-----|-------------|---------|--------|
| C1 | 20° 57' 57" | 117.50' | 43.00' |
| C2 | 16° 29' 53" | 142.50' | 41.03' |
| C3 | 9° 16' 46" | 167.50' | 27.13' |
| C4 | 35° 28' 51" | 117.50' | 72.76' |
| C5 | 26° 18' 13" | 207.50' | 95.26' |
| C6 | 20° 14' 42" | 161.00' | 56.89' |
| C7 | 24° 30' 56" | 161.00' | 69.89' |
| C8 | 55° 02' 09" | 82.00' | 78.77' |
| C9 | 11° 25' 00" | 211.00' | 42.04' |
| C10 | 61° 15' 00" | 61.00' | 65.21' |
| C11 | 14° 30' 00" | 322.63' | 81.65' |
| C12 | 17° 56' 07" | 135.00' | 42.57' |
| C13 | 49° 39' 06" | 88.00' | 76.26' |
| C14 | 51° 44' 47" | 96.00' | 86.70' |
| C15 | 33° 00' 00" | 96.00' | 55.29' |
| C16 | 36° 34' 58" | 79.00' | 50.44' |
| C17 | 56° 18' 54" | 55.00' | 54.06' |
| C18 | 76° 25' 42" | 73.50' | 98.04' |



I, LOUISE V. ISAACS, CLERK OF THE CIRCUIT COURT OF MARTIN COUNTY, FLORIDA, HEREBY CERTIFY THAT THIS PLAT WAS FILED FOR RECORD IN PLAT BOOK 18, PAGE 29, MARTIN COUNTY, FLORIDA, PUBLIC RECORDS, THIS _____ DAY OF _____, 1986.

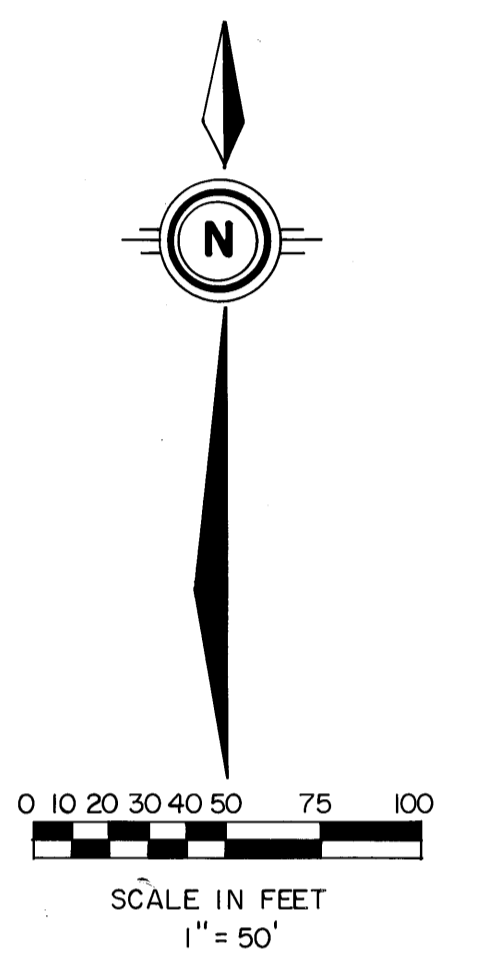
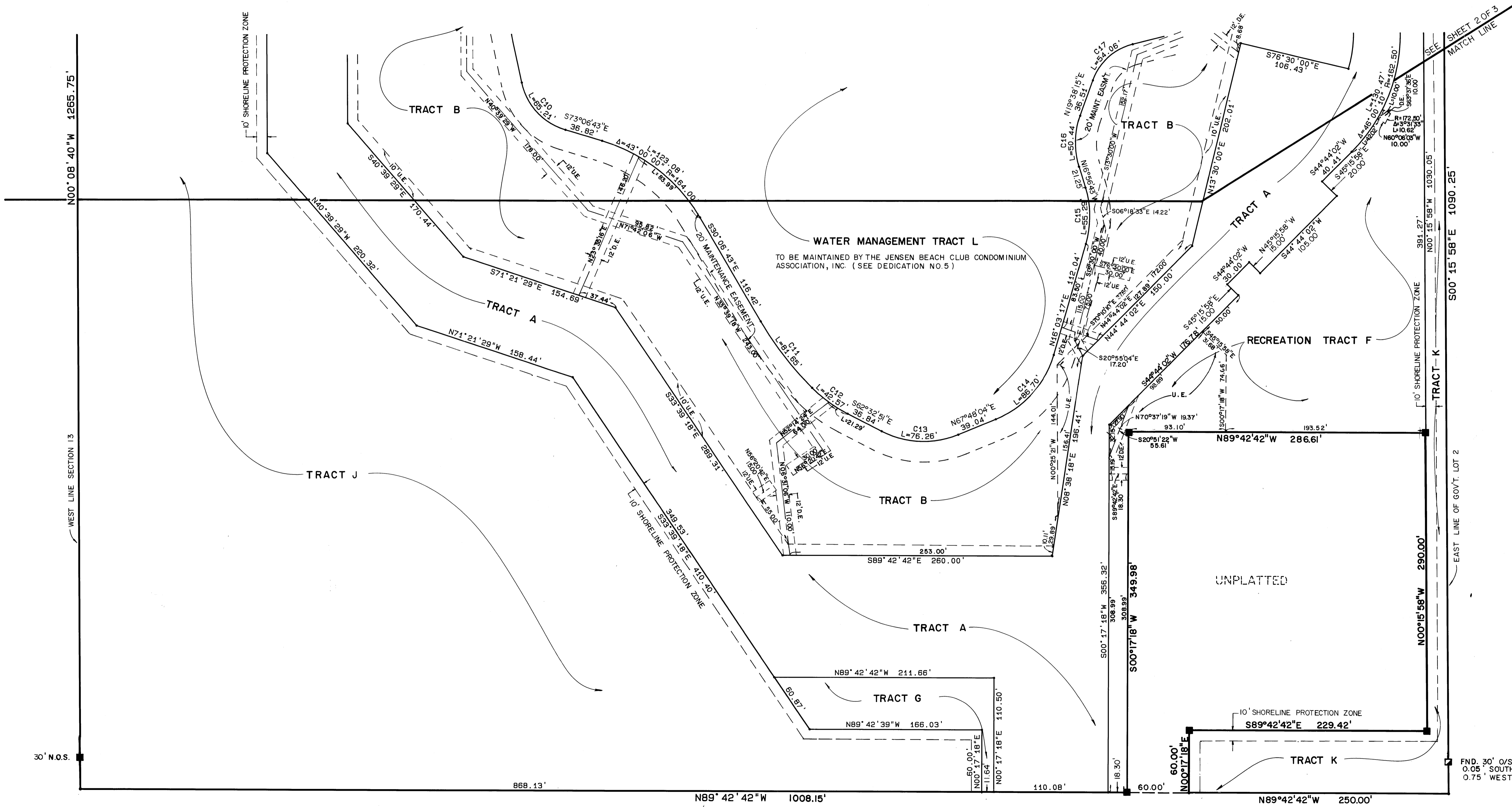
LOUISE V. ISAACS, CLERK
CIRCUIT COURT
MARTIN COUNTY, FLORIDA

BY: _____
DEPUTY CLERK

FILE NO. _____

(CIRCUIT COURT SEAL)

NOTE: ALL SIGNATURES ON PLAT MUST BE IN INK.



WEST PALM BEACH, FLORIDA

Meridian
Surveying and mapping inc.

| | |
|------------------------|-----------------|
| DRAWN MEH/DMW | DATE 7/22/85 |
| CHECKED DMW | SCALE 1"=50' |
| DRAWING NO 85-P-040 | |

THE JENSEN BEACH CLUB