

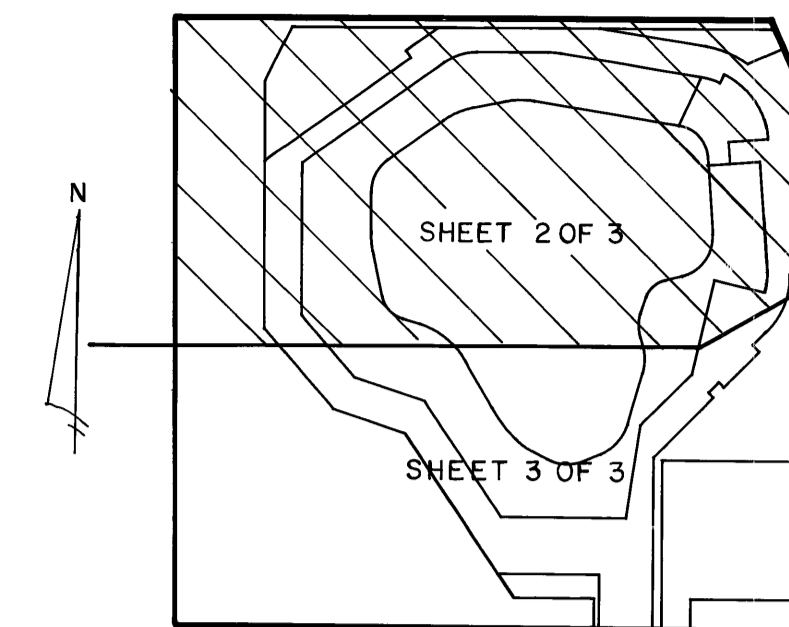
THE JENSEN BEACH CLUB

A PORTION OF JENSEN BEACH CLUB P.U.D.
SITUATE IN SECTION 13, TOWNSHIP 37 SOUTH, RANGE 41 EAST
MARTIN COUNTY, FLORIDA.

MARCH, 1986

SHEET 2 OF 3

NO.	DELTA	RADIUS	LENGTH
C1	20°57'57"	117.50'	43.00'
C2	16°29'53"	142.50'	41.03'
C3	9°16'46"	167.50'	27.13'
C4	3°55'28"	117.50'	72.76'
C5	2°18'13"	207.50'	96.26'
C6	20°14'42"	161.00'	56.89'
C7	24°30'56"	161.00'	68.89'
C8	55°02'09"	82.00'	78.77'
C9	11°25'00"	211.00'	42.04'
C10	61°15'00"	61.00'	65.24'
C11	14°30'00"	322.63'	81.65'
C12	17°56'07"	136.00'	42.57'
C13	49°39'06"	88.00'	76.26'
C14	51°44'47"	96.00'	86.70'
C15	33°00'00"	96.00'	55.29'
C16	36°34'58"	79.00'	50.44'
C17	56°18'54"	55.00'	54.06'
C18	76°25'42"	73.50'	98.04'



I, LOUISE V. ISAACS,
CLERK OF THE CIRCUIT
COURT OF MARTIN COUNTY,
FLORIDA, HEREBY CERTIFY
THAT THIS PLAT WAS FILED
FOR RECORD IN PLAT BOOK
10, PAGE 24, MARTIN
COUNTY, FLORIDA, PUBLIC
RECORDS, THIS DAY
OF _____, 1986.

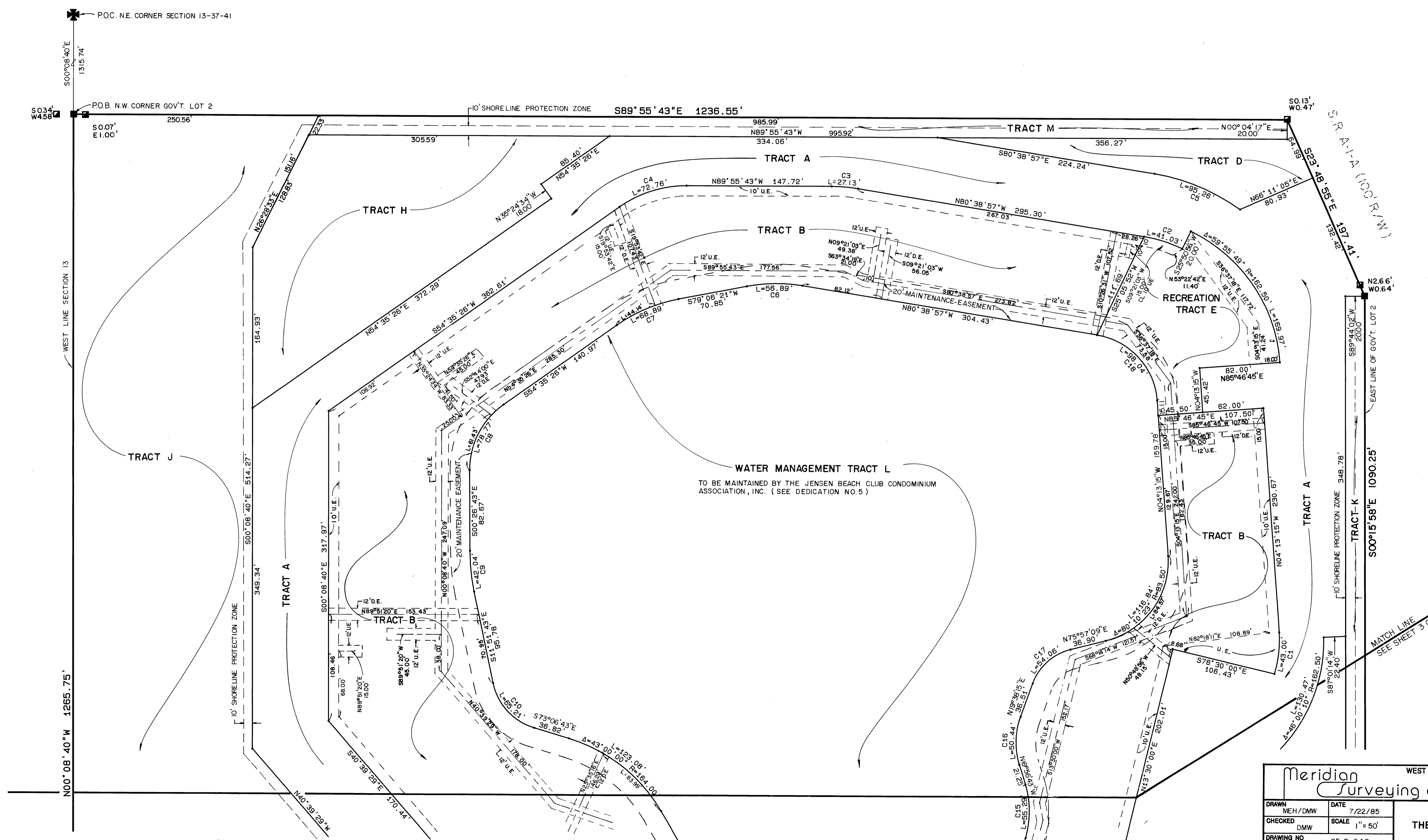
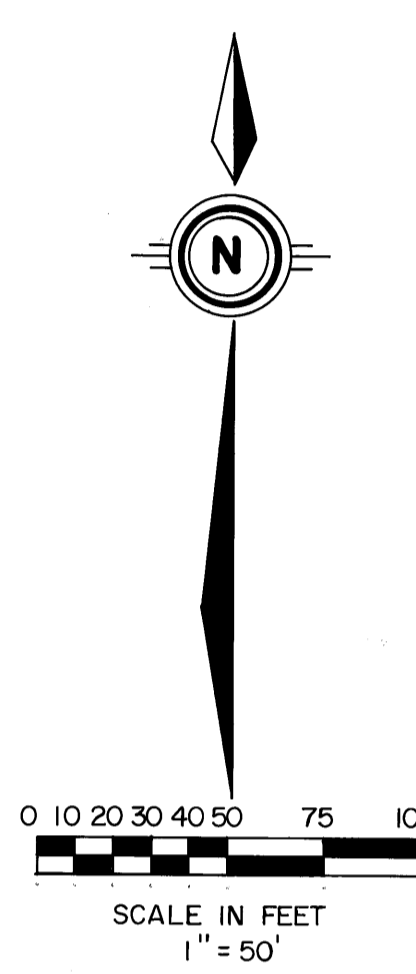
LOUISE V. ISAACS, CLERK
CIRCUIT COURT
MARTIN COUNTY, FLORIDA

BY: _____
DEPUTY CLERK

FILE NO.

(CIRCUIT COURT SEAL)

NOTE: ALL SIGNATURES
ON PLAT MUST BE IN INK.



Meridian
Surveying and mapping inc.

DRAWN	MEH/DMW	DATE	7/22/85
CHECKED	DMW	SCALE	1" = 50'
DRAWING NO	85-P-040		

WEST PALM BEACH, FLORIDA

THE JENSEN BEACH CLUB