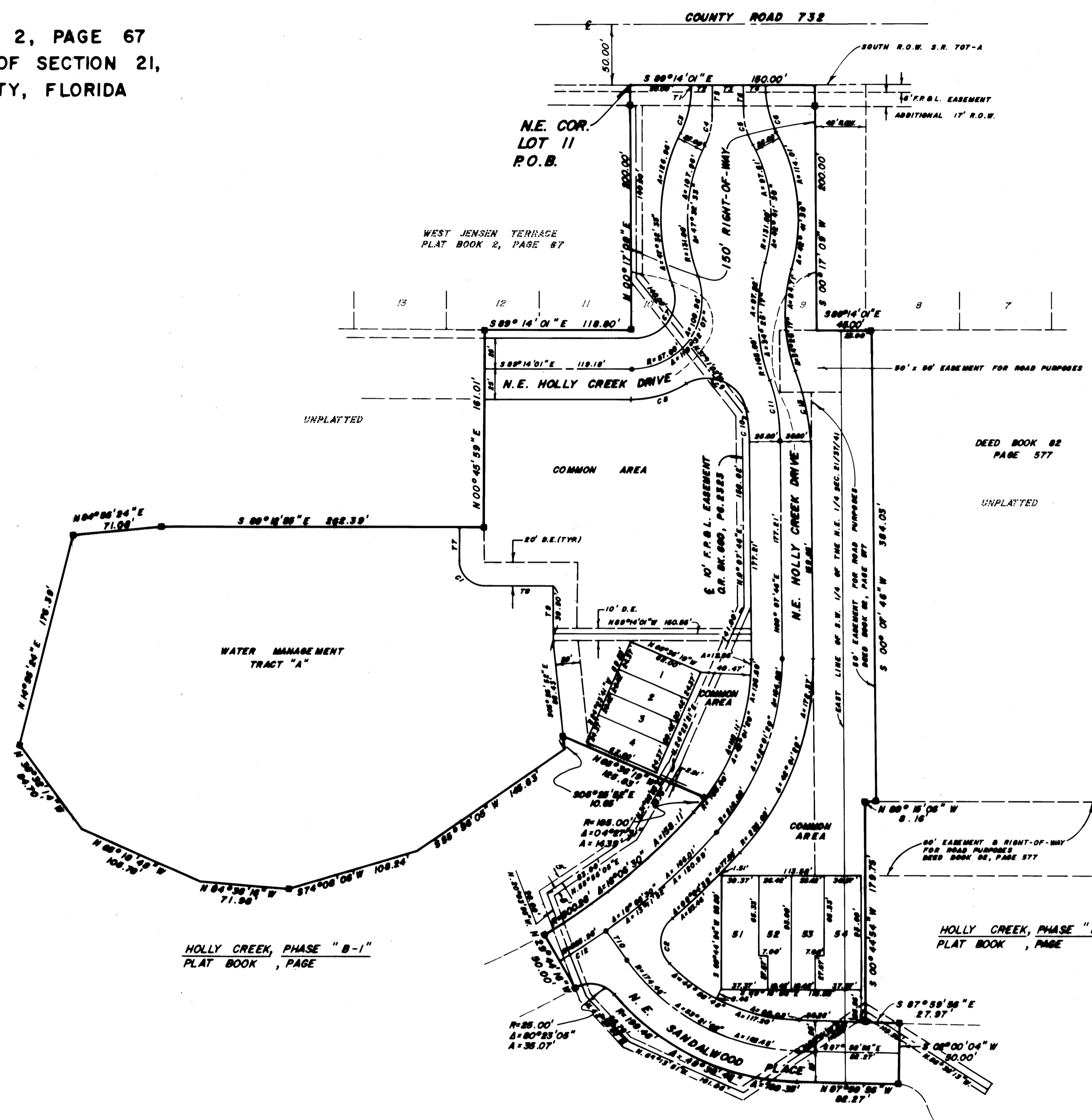


# A PLAT OF HOLLY CREEK PHASE "A"

BEING A RE-PLAT OF LOTS 9 AND 10  
WEST JENSEN TERRACE AS RECORDED IN PLAT BOOK 2, PAGE 67  
MARTIN COUNTY, FLORIDA TOGETHER WITH A PORTION OF SECTION 21,  
TOWNSHIP 37 SOUTH, RANGE 41 EAST, MARTIN COUNTY, FLORIDA

MARCH, 1986



LABEL	BEARING	DISTANCE
T1	S 00°17'09" W	3.29'
T2	S 89°14'01" E	17.24'
T3	S 89°14'01" E	25.00'
T4	S 89°14'01" E	18.00'
T5	S 00°17'09" W	23.85'
T6	N 00°17'09" W	19.50'
T7	N 00°45'59" E	28.00'
T8	N 89°14'01" W	56.00'
T9	N 00°45'59" E	45.00'
T10	S 34°38'53" E	29.48'

LABEL	RADIUS	CENTRAL ANGLE	ARC LENGTH
C1	20.00	90°00'00"	31.42
C2	25.00	93°18'02"	40.71
C3	81.00	27°09'44"	38.40
C4	57.67	27°09'44"	27.34
C5	66.73	27°09'44"	31.64
C6	81.00	27°09'44"	38.40
C7	32.05	110°51'40"	62.01
C8	82.00	32°10'57"	46.06
C9	32.00	109°51'09"	61.35
C10	130.88	12°00'13"	27.42
C11	155.88	18°44'00"	50.96
C12	525.28	04°54'38"	45.02
C13	234.51	18°44'00"	76.67

N

SCALE: 1" = 60'

0 30 60 120

SHEET 3 OF 3

I, LOUISE V. ISAACS,  
CLERK OF THE CIRCUIT  
COURT OF MARTIN COUNTY,  
FLORIDA, HEREBY CERTIFY  
THAT THIS PLAT WAS FILED  
FOR RECORD IN PLAT  
BOOK 10, PAGE 16,  
MARTIN COUNTY, FLORIDA,  
PUBLIC RECORDS, THIS  
DAY OF \_\_\_\_\_  
A.D., 1986.

LOUISE V. ISAACS, CLERK  
CIRCUIT COURT  
MARTIN COUNTY, FLORIDA

BY \_\_\_\_\_  
DEPUTY CLERK

FILE NO. \_\_\_\_\_

- LEGEND**
- DENOTES (P.R.M.) PERMANENT REFERENCE MONUMENT
  - DENOTES (P.C.P.) PERMANENT CONTROL POINT

- Notes:**
1. Each number tract depicted hereon is a lot.
  2. Bearings of lot lines lying between lot lines designated with bearings are parallel to said designated bearings.
  3. D.E. - denotes Drainage Easement.  
U.E. - denotes Utility Easement.

**BEARING BASE:**  
THE SOUTH RIGHT-OF-WAY LINE OF COUNTY ROAD 732 IS TAKEN AS BEING S 89°14'01" E, AND ALL OTHER BEARINGS ARE RELATIVE THERETO.