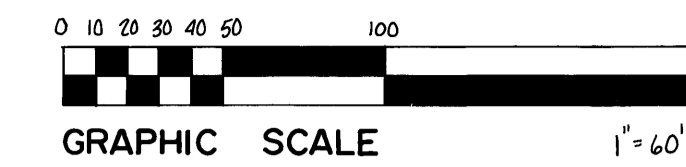


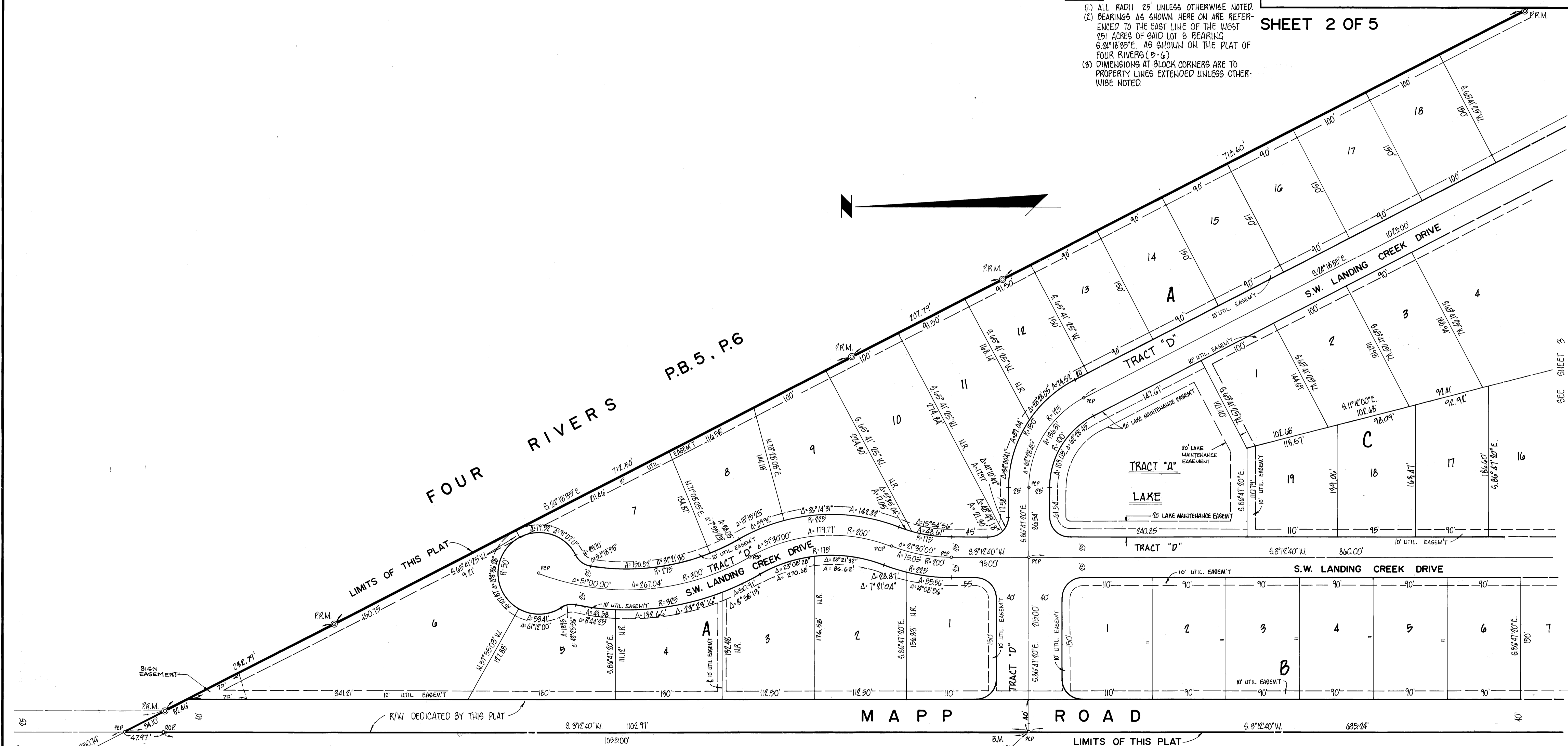
RIVER LANDING



CLERK'S RECORDING CERTIFICATE
 I, LOUISE V. ISAACS, CLERK OF THE CIRCUIT COURT OF MARTIN COUNTY, FLORIDA, HEREBY CERTIFY THAT THIS PLAT WAS FILED FOR RECORD IN PLAT BOOK 10, PAGE 25 MARTIN COUNTY, FLORIDA, PUBLIC RECORDS, THIS DAY OF 198 .
 LOUISE V. ISAACS, CLERK
 CIRCUIT COURT
 MARTIN COUNTY, FLORIDA
 FILE NO. BY:
 DEPUTY CLERK

LEGEND
 — DENOTES (P.C.P.) PERMANENT CONTROL POINT
 ⊙ DENOTES (P.R.M.) PERMANENT REFERENCE MONUMENT
 N.R. INDICATES NON-RADIAL
NOTES
 (1) ALL RADII 25' UNLESS OTHERWISE NOTED.
 (2) BEARINGS AS SHOWN HERE ON ARE REFERENCED TO THE EAST LINE OF THE WEST 251 ACRES OF SAID LOT 8 BEARING S.24°16'35"E AS SHOWN ON THE PLAT OF FOUR RIVERS (P-6)
 (3) DIMENSIONS AT BLOCK CORNERS ARE TO PROPERTY LINES EXTENDED UNLESS OTHERWISE NOTED.

SHEET 2 OF 5



EAST LINE OF THE WEST 251 ACRES OF LOT 8 OF THE "COMMISSIONER'S SUBDIVISION OF THE MILES OR HANSON GRANT", P.B. 1, P. 11, PUBLIC RECORDS OF PALM BEACH (NOW MARTIN) COUNTY, FLORIDA.

M A P P R O A D

A C R E A G E

DENI ASSOCIATES
 4700 HIATUS RD, SUITE 351
 SUNRISE, FL. 33321
 (305) 749-0333