

A PLAT OF - TOWER GOLF COURSE

BEING PLAT NO. 17 OF MARTIN DOWNS, A P.U.D.
LYING IN SECTIONS 11, 13 & 14 TWP. 38S., RGE. 40E.
MARTIN COUNTY, FLORIDA

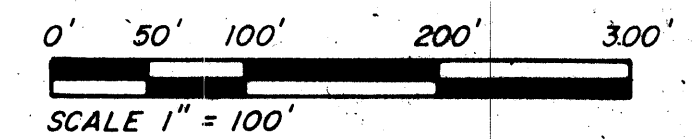
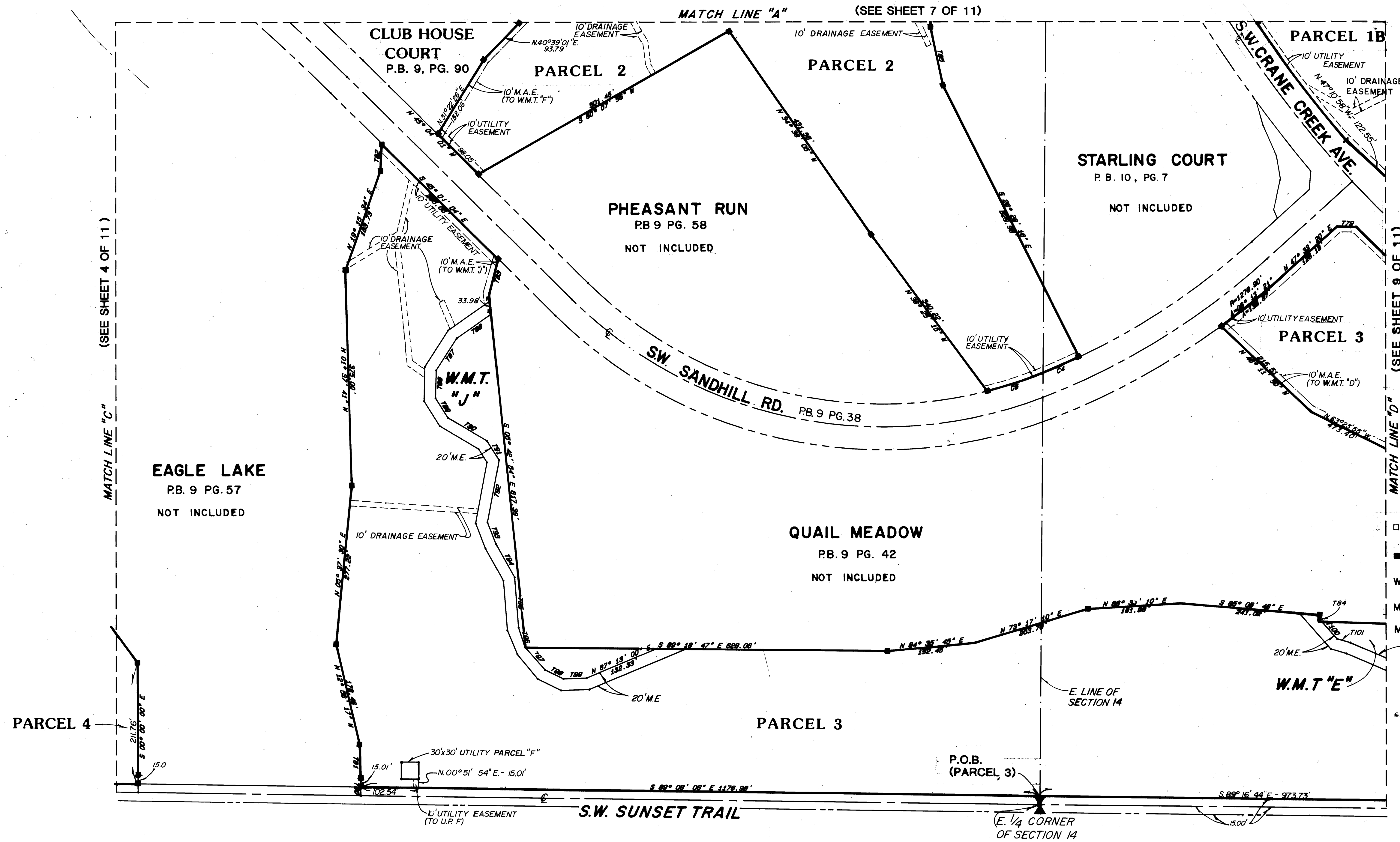
FEBRUARY, 1986

I, LOUISE V. ISAACS,
CLERK OF THE CIRCUIT
COURT OF MARTIN COUNTY,
FLORIDA, HEREBY CERTIFY
THAT THIS PLAT WAS FILED
FOR RECORD IN PLAT BOOK
BOOK 18, PAGE 22,
MARTIN COUNTY, FLORIDA,
PUBLIC RECORD, THIS
DAY OF _____
A.D., 1986.

LOUISE V. ISAACS, CLERK
CIRCUIT COURT
MARTIN COUNTY, FLORIDA

BY _____
DEPUTY CLERK

FILE NO. _____



- = SET P.R.M.
- = FND. P.R.M. (PERMANENT REFERENCE MONUMENT)
- W.M.T. = WATER MANAGEMENT TRACT
- M.E. = MAINTENANCE EASEMENT
- M.A.E. = MAINTENANCE ACCESS EASEMENT