

# A PLAT OF - TOWER GOLF COURSE

BEING PLAT NO. 17 OF MARTIN DOWNS, A P.U.D.  
LYING IN SECTIONS 11, 13 & 14 TWP. 38S, RGE. 40E.  
MARTIN COUNTY, FLORIDA

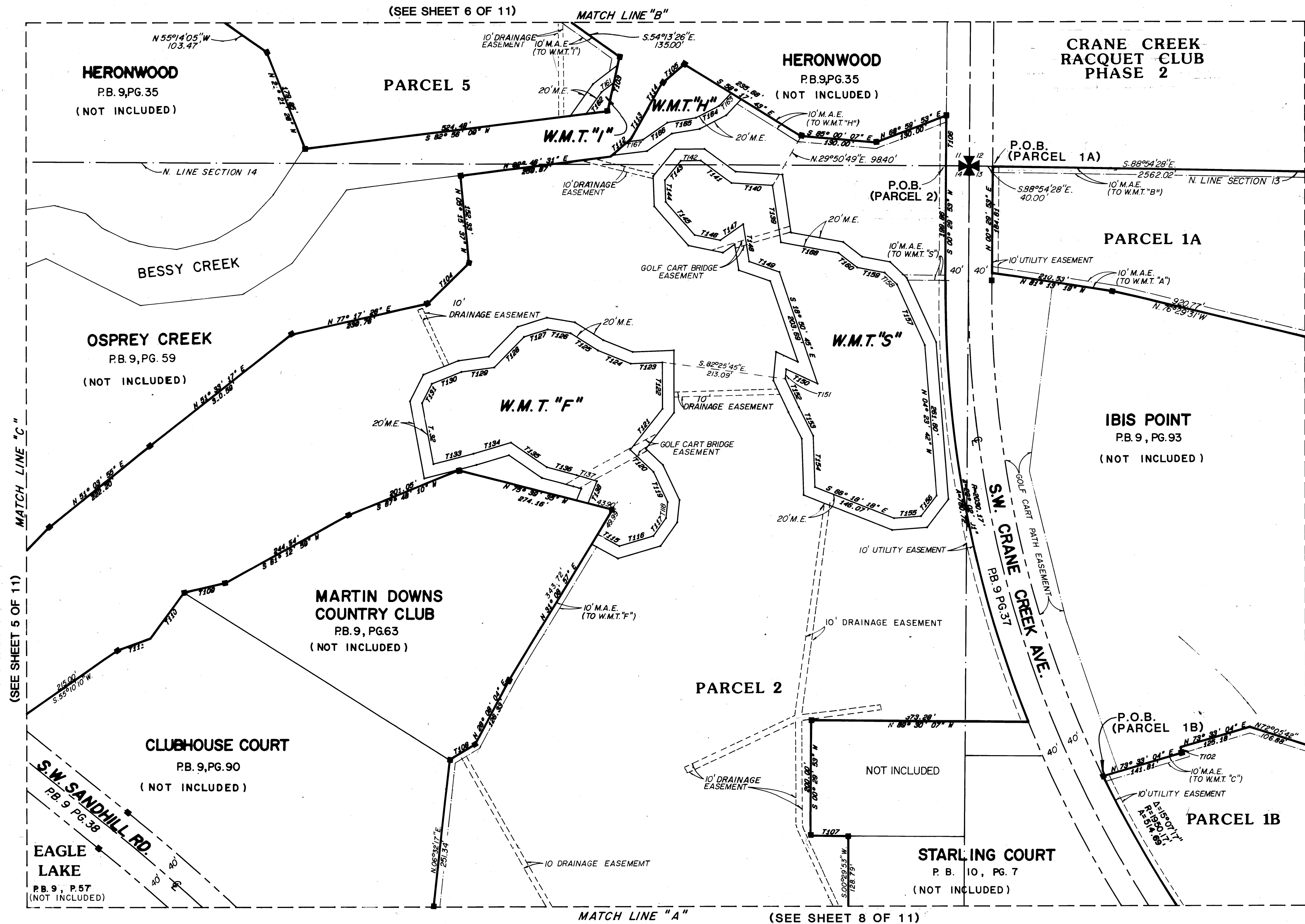
FEBRUARY, 1986

I, LOUISE V. ISAACS,  
CLERK OF THE CIRCUIT  
COURT OF MARTIN COUNTY,  
FLORIDA, HEREBY CERTIFY  
THAT THIS PLAT WAS FILED  
FOR RECORD IN PLAT  
BOOK 10, PAGE 23,  
MARTIN COUNTY, FLORIDA,  
PUBLIC RECORDS, THIS  
DAY OF \_\_\_\_\_,  
A.D., 1986.

LOUISE V. ISAACS, CLERK  
CIRCUIT COURT  
MARTIN COUNTY, FLORIDA.

BY \_\_\_\_\_  
DEPUTY CLERK

FILE NO. \_\_\_\_\_



(SEE SHEET 10 OF 11)

(SEE SHEET 5 OF 11)

(SEE SHEET 8 OF 11)

(SEE SHEET 6 OF 11)

- = SET P.R.M.
- = FND. P.R.M. (PERMANENT REFERENCE MONUMENT)
- W.M.T. = WATER MANAGEMENT TRACT
- M.E. = MAINTENANCE EASEMENT
- M.A.E. = MAINTENANCE ACCESS EASEMENT

LINDAHL, BROWNING, FERRARI & HELLSTROM, INC. CONSULTING ENGINEERS, PLANNERS & SURVEYORS		
P.O. BOX 727 JUPITER, FLORIDA 33458	10 Central Parkway Suite 420 Stuart, Florida 33497	117 SOUTH SECOND STREET SUITE 202 FORT PIERCE, FLORIDA 33450
<b>7</b>	<b>11</b>	