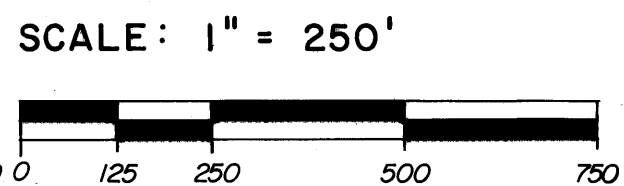
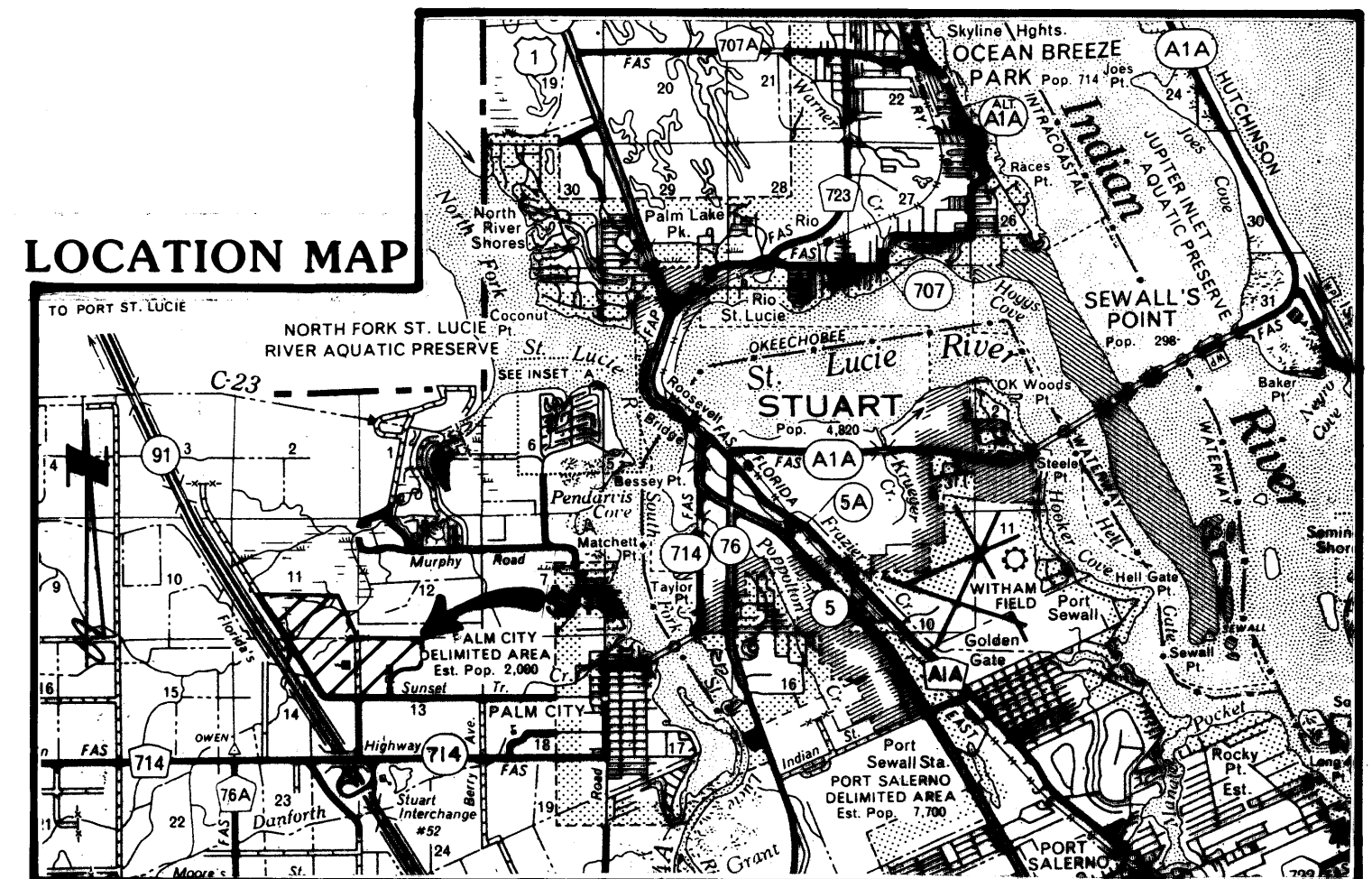
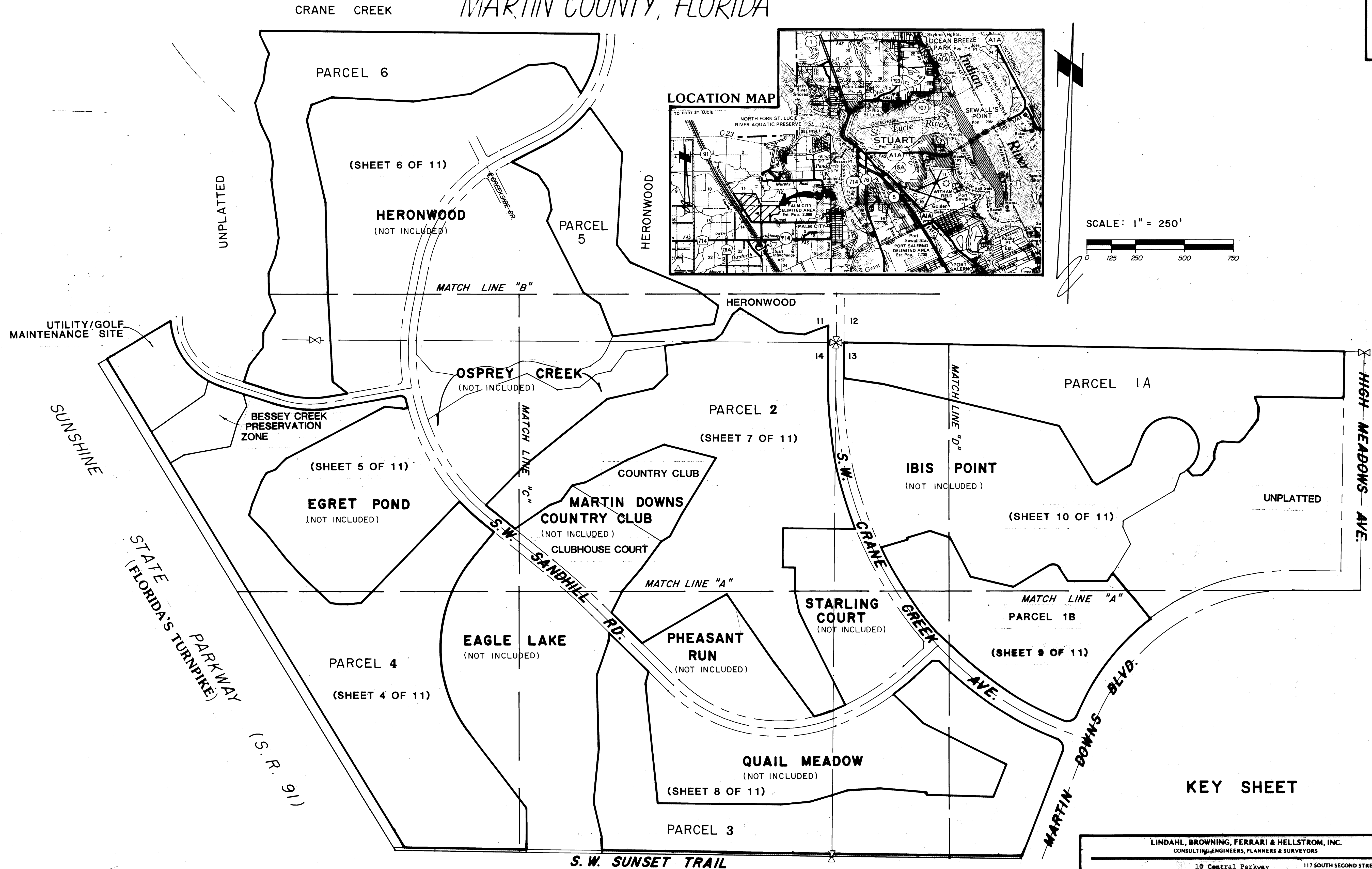


# A PLAT OF - TOWER GOLF COURSE

BEING PLAT NO. 17 OF MARTIN DOWNS, A P.U.D.  
LYING IN SECTIONS 11, 13 & 14 TWP. 38S, RGE. 40E.  
MARTIN COUNTY, FLORIDA

I, LOUISE V. ISAACS,  
CLERK OF THE CIRCUIT  
COURT OF MARTIN COUNTY,  
FLORIDA, HEREBY CERTIFY  
THAT THIS PLAT WAS FILED  
FOR RECORD IN PLAT  
BOOK 10, PAGE 23,  
MARTIN COUNTY, FLORIDA,  
PUBLIC RECORDS, THIS  
DAY OF \_\_\_\_\_,  
A.D., 1986.  
LOUISE V. ISAACS, CLERK  
CIRCUIT COURT  
MARTIN COUNTY, FLORIDA.  
BY \_\_\_\_\_  
DEPUTY CLERK  
FILE NO. \_\_\_\_\_

FEBRUARY, 1986



KEY SHEET

LINDAHL, BROWNING, FERRARI & HELLSTROM, INC. CONSULTING ENGINEERS, PLANNERS & SURVEYORS		
P.O. BOX 727 JUPITER, FLORIDA 33408	10 Central Parkway Suite 420 Stuart, Florida 33497	117 SOUTH SECOND STREET SUITE 202 FORT PIERCE, FLORIDA 33450
		<b>3 11</b>