

PLAT OF CONGRESSIONAL PLACE

BEING A TRACT OF LAND LYING IN SECTION 31 & 32, TOWNSHIP 38 SOUTH, RANGE 42 EAST, MARTIN COUNTY, FLORIDA.
BEING A PART OF THE MARINER SANDS P.U.D.

Sheet 2 of 3

I, Louise V. Isaacs, Clerk of the Circuit Court of Martin County, Florida, hereby certify that this plat was filed for record in Plat Book 10, Page 20, Martin County, Florida, public records, this _____ day of _____, 1985

LOUISE V. ISAACS, CLERK
CIRCUIT COURT
MARTIN COUNTY, FLORIDA

BY: _____
Deputy Clerk

File No. _____

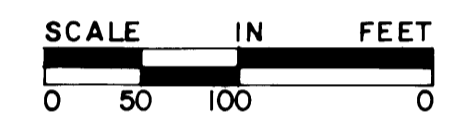
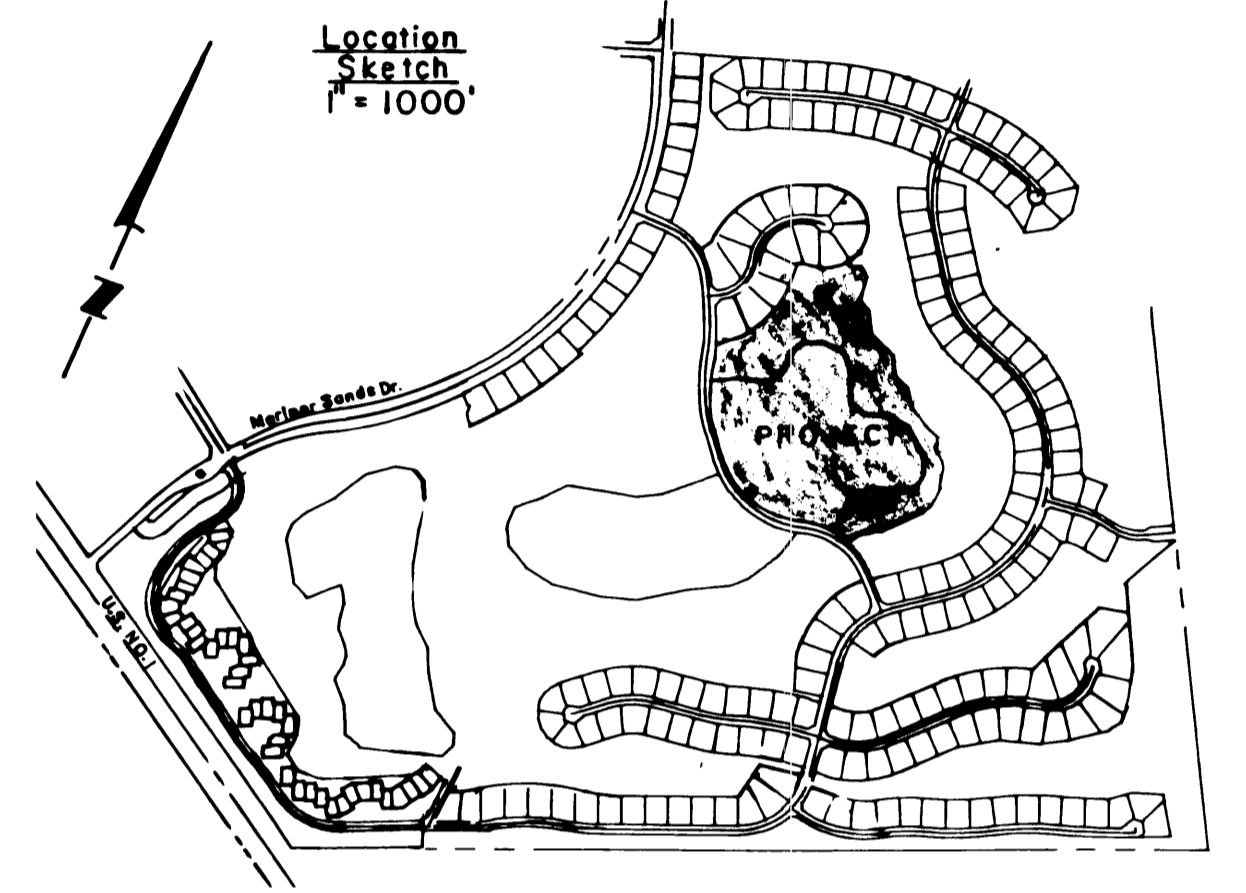
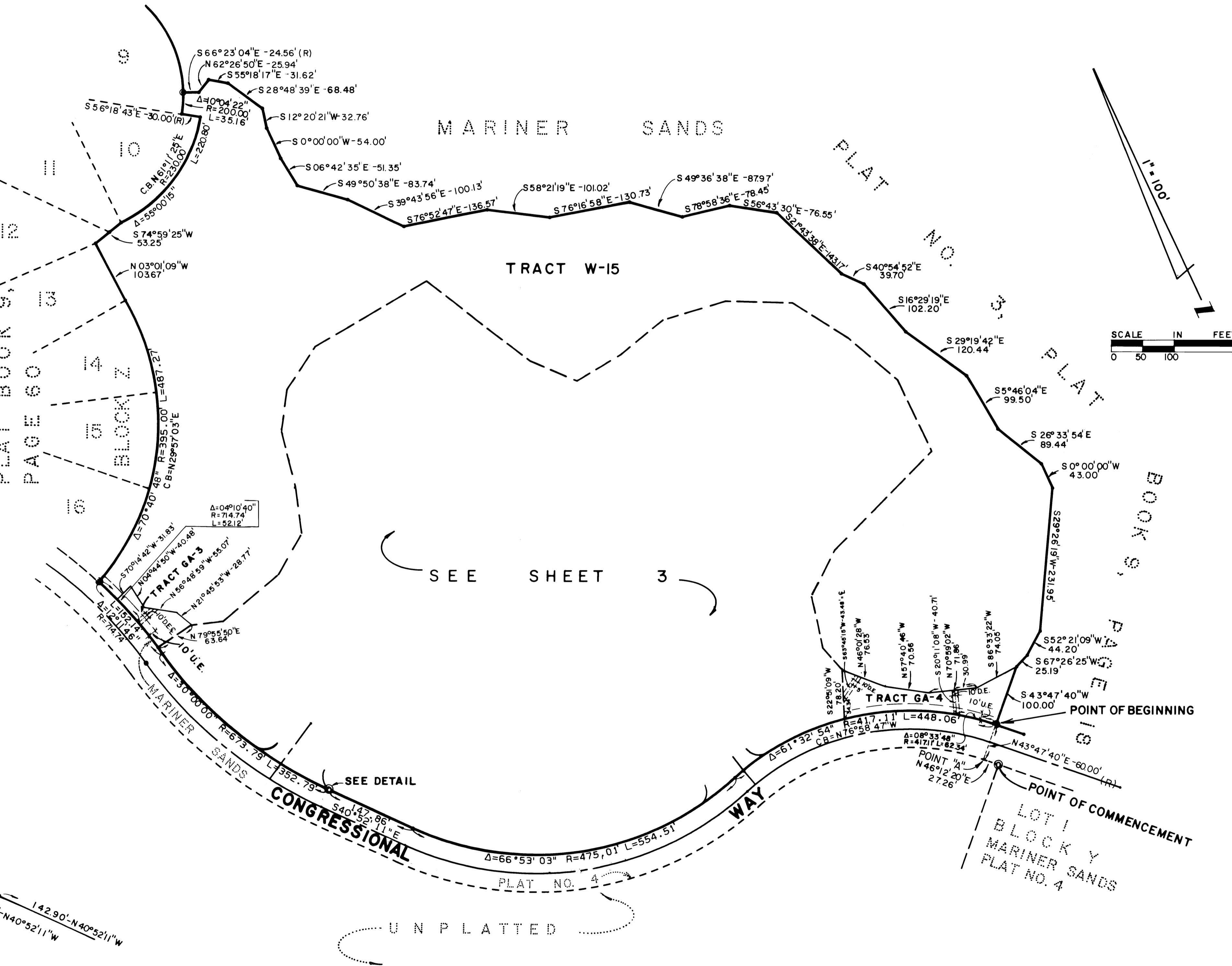
SHEET 2 OF 3 SHEETS

Hutcheon Engineers
CIVIL ENGINEERS & SURVEYORS

WEST PALM BEACH
BELLE GLADE STUART

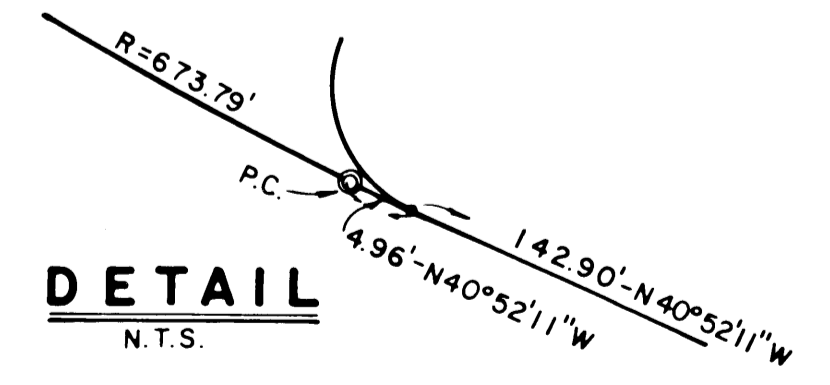
AUGUST, 1985

MARINER SANDS PLAT NO. 4
PLAT BOOK 9,
PAGE 60



- LEGEND**
- DENOTES PERMANENT REFERENCE MONUMENT (P.R.M.) FOUND.
 - DENOTES PERMANENT REFERENCE MONUMENT (P.R.M.) SET.
 - DENOTES PERMANENT CONTROL POINT (P.C.P.).
 - D.E. DENOTES DRAINAGE EASEMENT.
 - U.E. DENOTES UTILITY EASEMENT.
 - (R) DENOTES A RADIAL LINE.
 - W DENOTES WATER TRACT.
 - G.A. DENOTES GREEN AREA.
 - G.C. DENOTES GOLF COURSE.
 - M.E. DENOTES MAINTENANCE EASEMENT.

NOTE:
BEARINGS SHOWN HEREON REFERENCED TO
MARINER SANDS PLAT NO. 3 AS RECORDED
IN PLAT BOOK 9, PAGE 18 PUBLIC RECORDS
OF MARTIN COUNTY, FLORIDA.



UNPLATTED