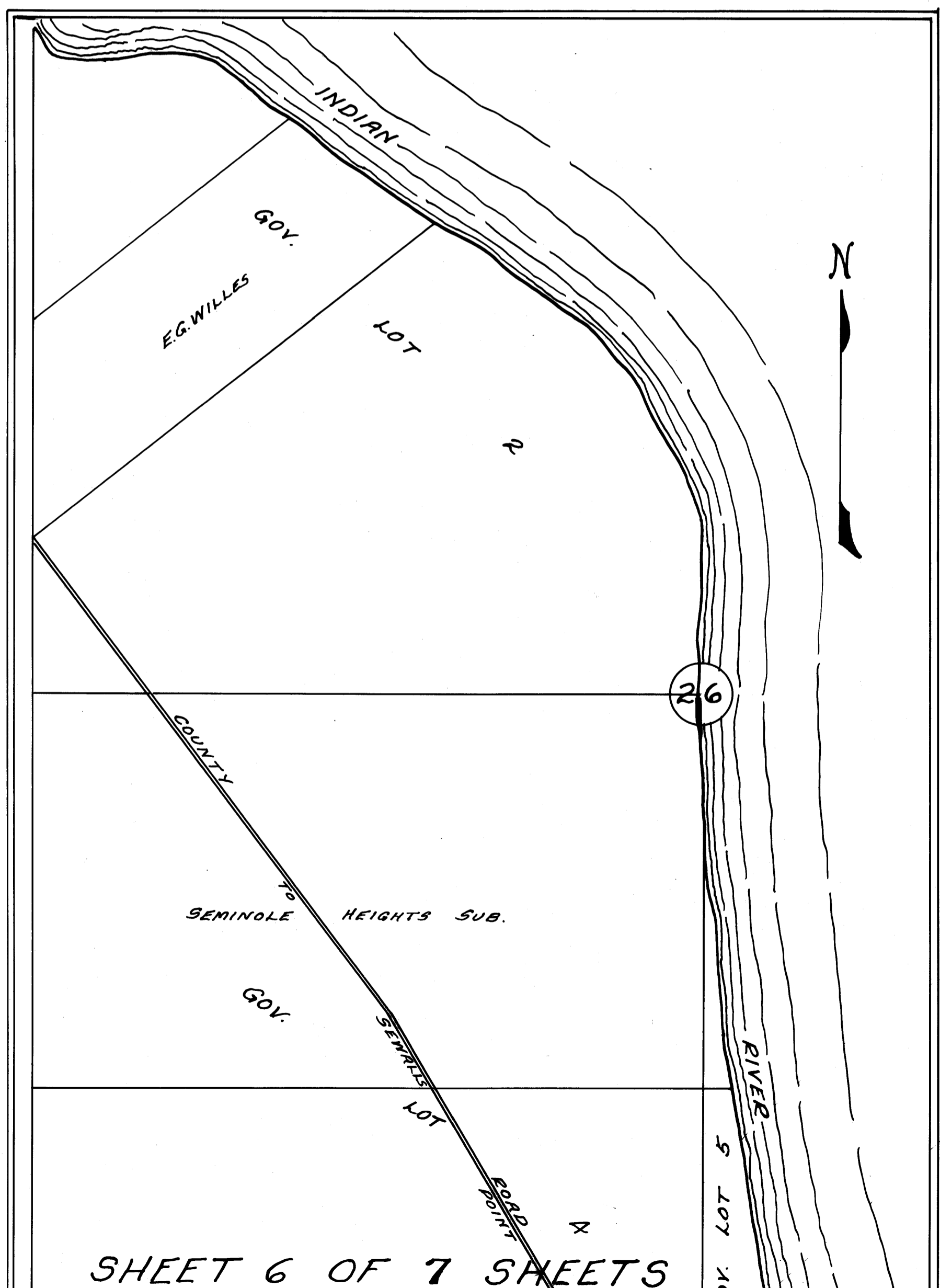


STATE OF FLORIDA } 55
 COUNTY OF MARTIN }
 THIS INSTRUMENT WAS FILED FOR
 RECORD AT 2:54 P.M. THIS 17TH DAY OF
 OCTOBER, 1927 AND DULY RECORDED
 ON THE _____ DAY OF _____ 19____ IN
 BOOK L, OF PLATS ON PAGE 78,
 RECORD VERIFIED.

 CLERK OF CIRCUIT COURT
 BY _____
 DEPUTY CLERK

THIS IS A TRUE COPY OF THE ORIGINAL
 PLAT OF RECORD OF TOWN OF JENSEN
 PLAT BOOK 1, PAGE 78, MARTIN
 COUNTY, FLORIDA.

_____ *Paul A. Stafford*
 REGISTERED LAND SURVEYOR
 FLORIDA CERTIFICATE NO. 443



KEY MAP OF OFFICIAL MAP OF THE TOWN OF JENSEN
 SHOWING THE DIVISION OF THE OFFICIAL MAP INTO 7 SEPARATE PLATS
 ON THIS KEY MAP IS SHOWN SHEET 6

PLATED BY
 THE ROBT CONCEIN INC.
 MAPMAKERS SURVEYORS
 STUART, MARTIN CO, FLORIDA
 Scale 1"=1500' SEPTEMBER 1927

CHECKED BY: _____ *Wm H. Root*
 COUNTY SURVEYOR