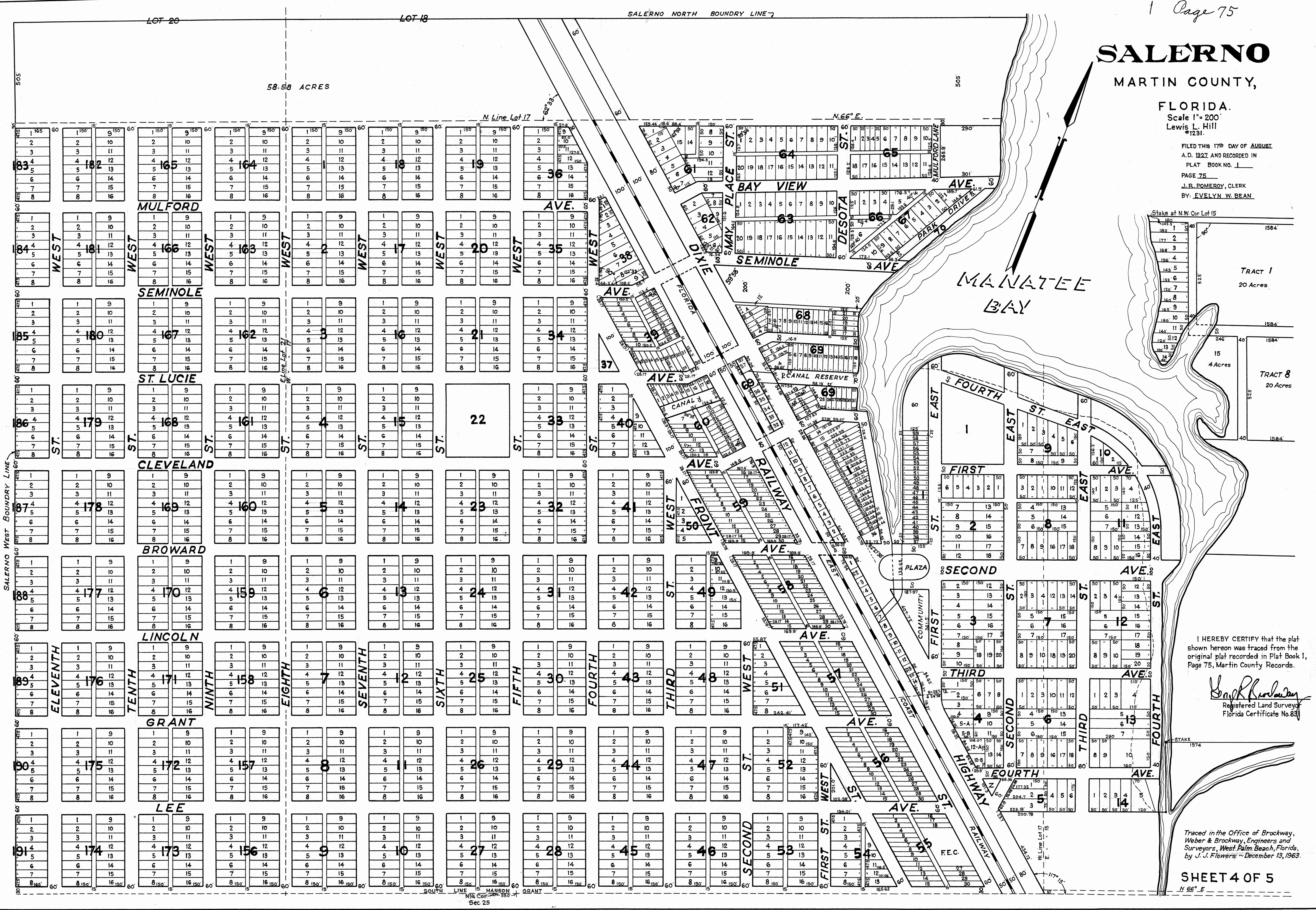


SALERNO

MARTIN COUNTY, FLORIDA.

Scale 1" = 200'
Lewis L. Hill
#1231.

FILED THIS 17th DAY OF AUGUST
A.D. 1927 AND RECORDED IN
PLAT BOOK NO. 1
PAGE 75
J. B. POMEROY, CLERK
BY: EVELYN W. BEAN



I HEREBY CERTIFY that the plat shown hereon was traced from the original plat recorded in Plat Book 1, Page 75, Martin County Records.

Langford
Registered Land Surveyor
Florida Certificate No. 83

Traced in the Office of Brockway, Weber & Brockway, Engineers and Surveyors, West Palm Beach, Florida, by J. J. Flowers - December 13, 1963.