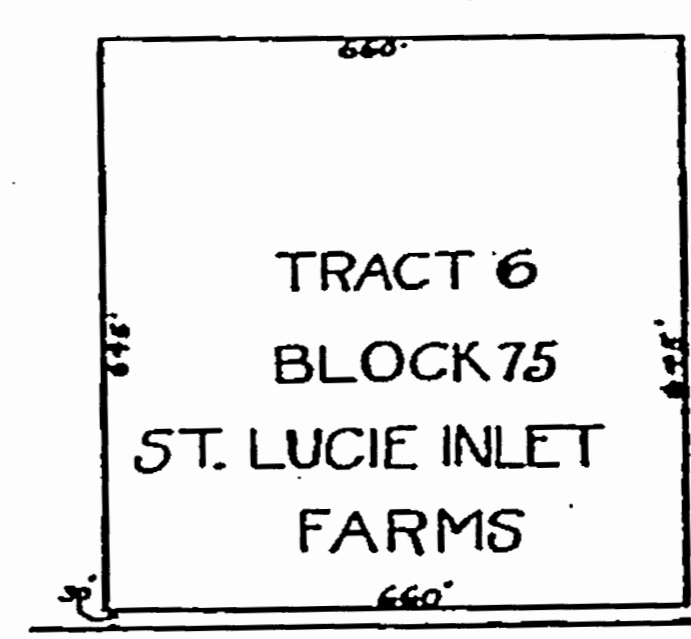
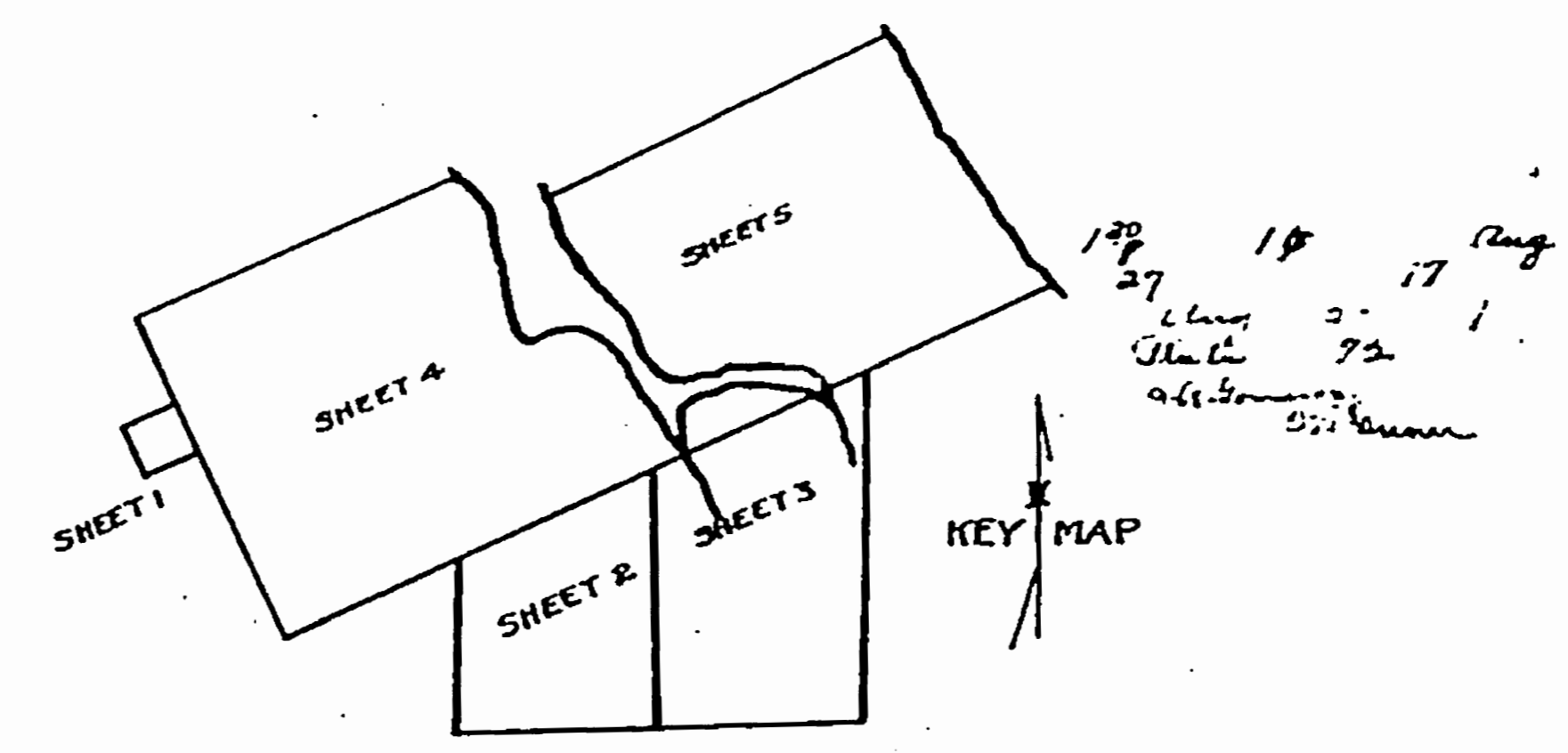


OFFICIAL MAP OF SALERNO

MARTIN COUNTY, FLORIDA.

Scale 1 inch = 200 feet.



W.R. JESSEE
ELI TAYLOR
GERTRUDE G. WHITFIELD
T.H. GETZEN

LEWIS L. HILL, C.E., SALERNO, FLORIDA.
Florida Registration Number 1221.

DESCRIPTION

Commencing at the 1/4 corner on the north line of Section 25, T.38 S., R. 11 E., said 1/4 corner being on the south line of the Hanson Grant;

Thence south 66° west along the south line of the Hanson Grant to the southeast corner of Tract 6, Block 75, St. Lucie Inlet Farms;

Thence north 24° west 2640 feet along the east line of Tracts 6 and 3 of Block 75, and continuing along the east line of Tracts 6 and 3 of Block 74, St. Lucie Inlet Farms to the southeast corner of Tract 6, Block 75, said St. Lucie Inlet Farms;

Thence south 66° west a distance of 660 feet along the south line of Tract 6, of Block 75, St. Lucie Inlet Farms, to the southwest corner of said Tract 6;

Thence north 24° west along the west line of Tract 6, a distance of 660 feet to the northwest corner of said Tract 6;

Thence north 66° east 660 feet along the north line of said Tract 6, to the northeast corner of said Tract 6, Block 75, St. Lucie Inlet Farms;

Thence north 24° west a distance of 1165 feet;

Thence north 66° east to the west shore of Manatee Bay;

Thence from said point on west shore of Manatee Bay to a point on the east shore of Manatee Bay caused by the intersection of the east shore of Manatee Bay and the north line of the el. O. Jackson Allotment;

Thence north 66° east along the north line of said el. O. Jackson Allotment to the center of Great Pocket of the Indian River;

Thence in a southeasterly direction along the center line of Great Pocket of the Indian River to a point of intersection of the south line of the Hanson Grant produced;

Thence south 66° west along the south line of the Hanson Grant to the 1/4 corner on the north line of Section 30, T.38 S., Range 42 east;

Thence south to the 1/4 corner on the south line of said section 30;

Thence west to the 1/4 corner on the south line of Section 25, T.38 S., R. 11 E.,

Thence north to 1/4 corner on the north line of Section 25, T.38 S., R. 11 E., to the place of beginning.

RESOLUTION

Whereas, Lewis L. Hill, Town Engineer for the Town of Salerno, having been instructed to draft a map or plat of the Town of Salerno, Martin County, Florida;

And whereas, said Lewis L. Hill, presented to the Town Commission of the Town of Salerno, map or plat designated as the official map of Salerno, Martin County, Florida, and sworn to by the said Lewis L. Hill, on the 23rd day of May A.D. 1927;

Therefore, be it resolved that the map or plat drafted by the said Lewis L. Hill, Town Engineer of the Town of Salerno, and marked official map of Salerno, sworn to on the 23rd day of May, A.D. 1927, be, and the same is hereby, adopted, ratified and confirmed as the official map or plat of the Town of Salerno, Martin County, Florida.

Certified as to passage this 7th day of June, A.D. 1927.

Eli Taylor
ACTING MAYOR COMMISSIONER.

Attest: Gertrude G. Whitfield
TOWN CLERK

ENGINEER'S CERTIFICATE

STATE OF FLORIDA }
COUNTY OF MARTIN } ss.

I hereby certify that the attached map of the Town of Salerno, Florida, is a composite of surveys made under my direction, of other surveys and recorded plats, and is a true & correct representation of available data to the best of my knowledge and belief.

Lewis L. Hill
FLORIDA REGISTRATION # 1221

Subscribed and sworn to before me at Salerno, Florida, this, the 23rd day of May, A.D. 1927.

Gertrude G. Whitfield
MAYOR COMMISSIONER
My commission expires Nov. 2, 1928

Approved by Wm. R. Root
COUNTY SURVEYOR