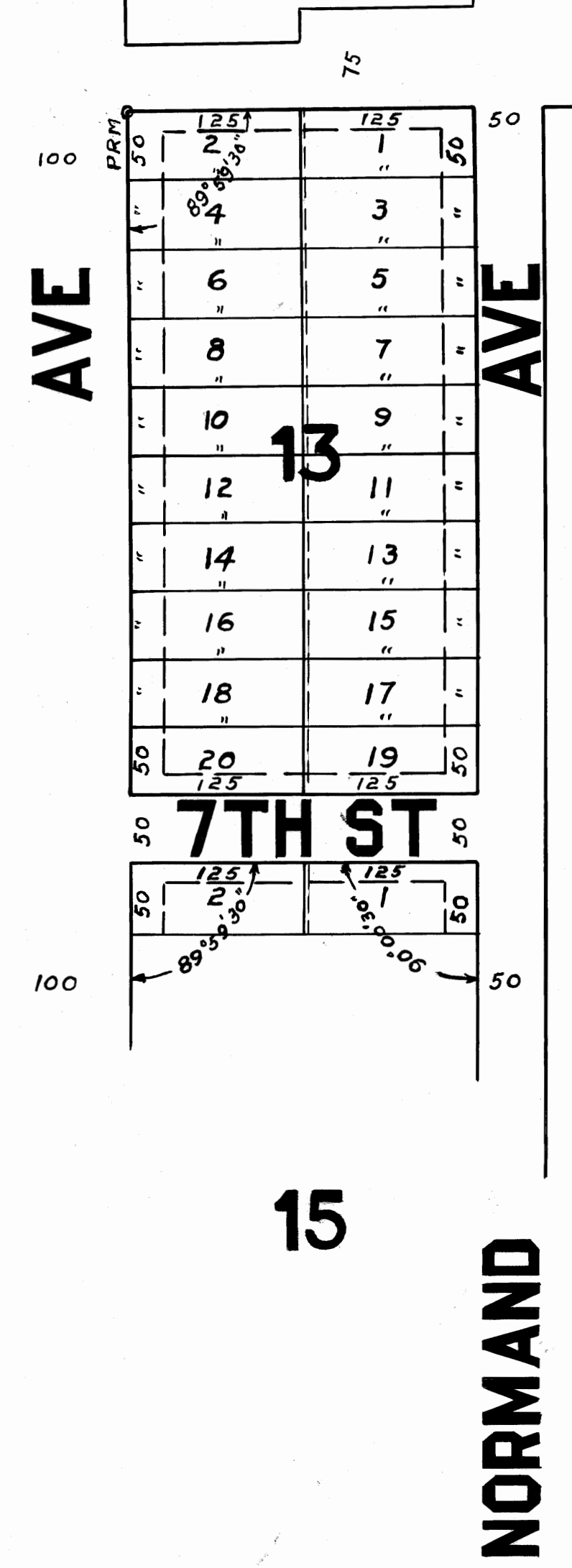


STATE OF FLORIDA } ss
 COUNTY OF PALM BEACH }
 THIS INSTRUMENT WAS FILED FOR
 RECORD AT 2 P.M. THIS 29TH DAY OF
 APR. 1926 AND DULY RECORDED ON THE
 29 DAY OF APR. 1926 IN
 BOOK L OF PLATS ON PAGE 50-C
 RECORD VERIFIED.
 J.P. Pomeroy
 CLERK CIRCUIT COURT
 BY _____ DEPUTY CLERK

THIS IS A TRUE COPY OF THE ORIGINAL
 PLAT OF RECORD OF "GOLDEN GATE PARK"
 SHEET #4, PLAT BOOK I, PAGE 50-C,
 MARTIN COUNTY, FLORIDA.
 Joseph Greenlee
 REGISTERED LAND SURVEYOR
 FLORIDA CERTIFICATE NO. 665



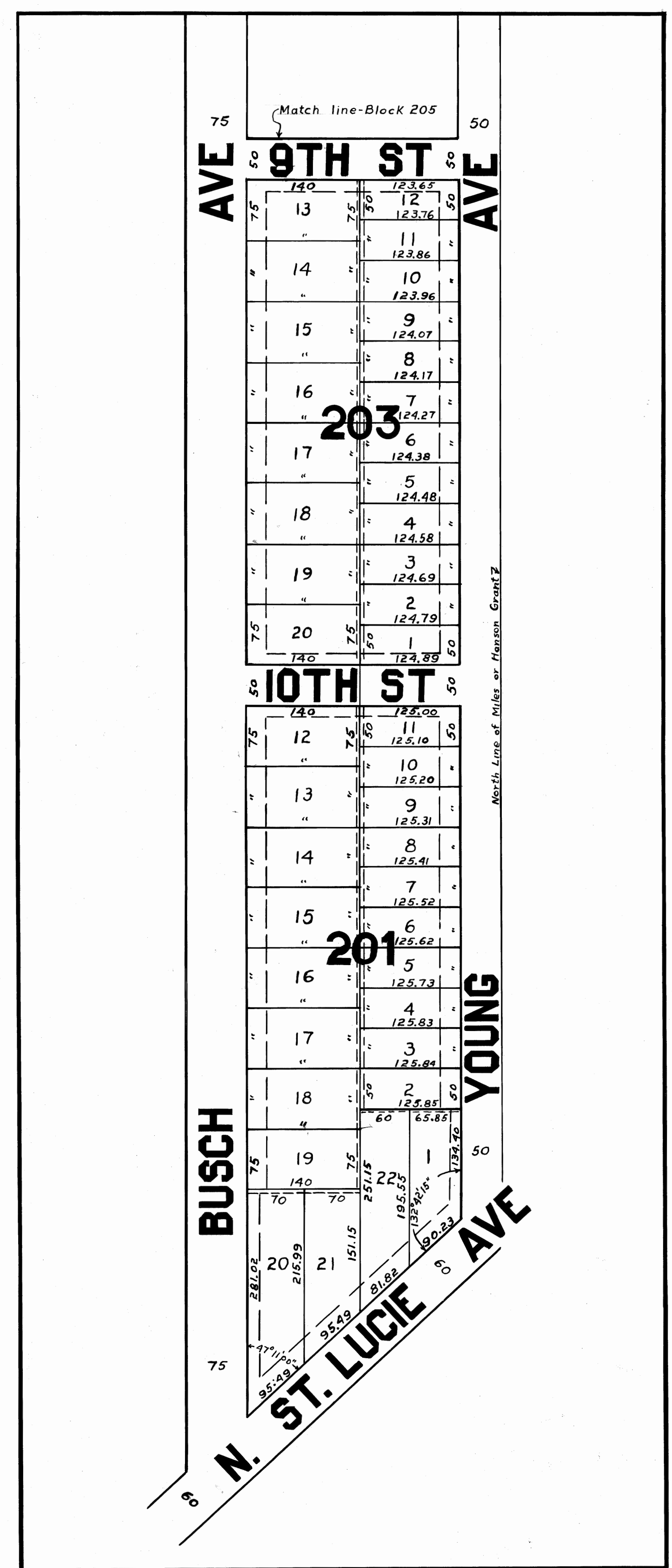
GOLF COURSE
 18 HOLE

NOT INCLUDED IN THE PLAT

INDIAN AVE

NORMAND AVE

15



BUSCH AVE

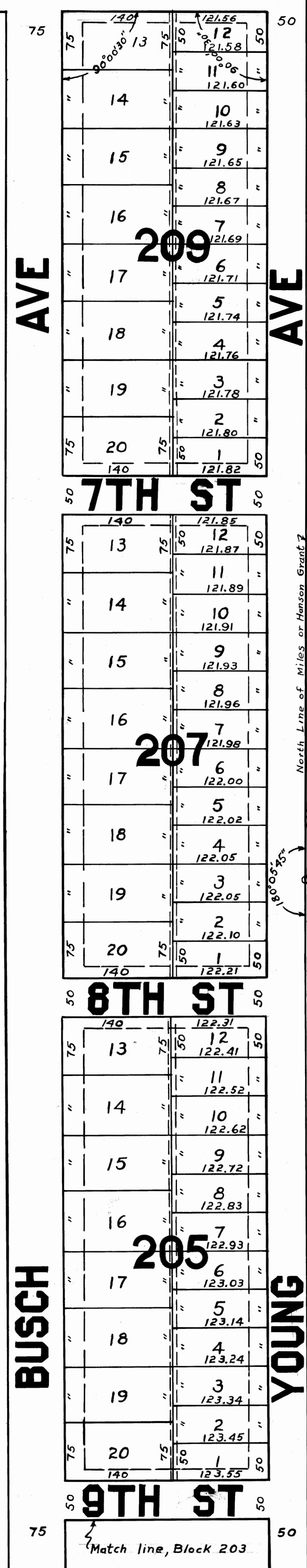
YOUNG AVE

N. ST. LUCIE AVE

201

203

209



BUSCH AVE

YOUNG AVE

205

207

209

GOLDEN GATE PARK
 SHEET 4
 OF 4 SHEETS