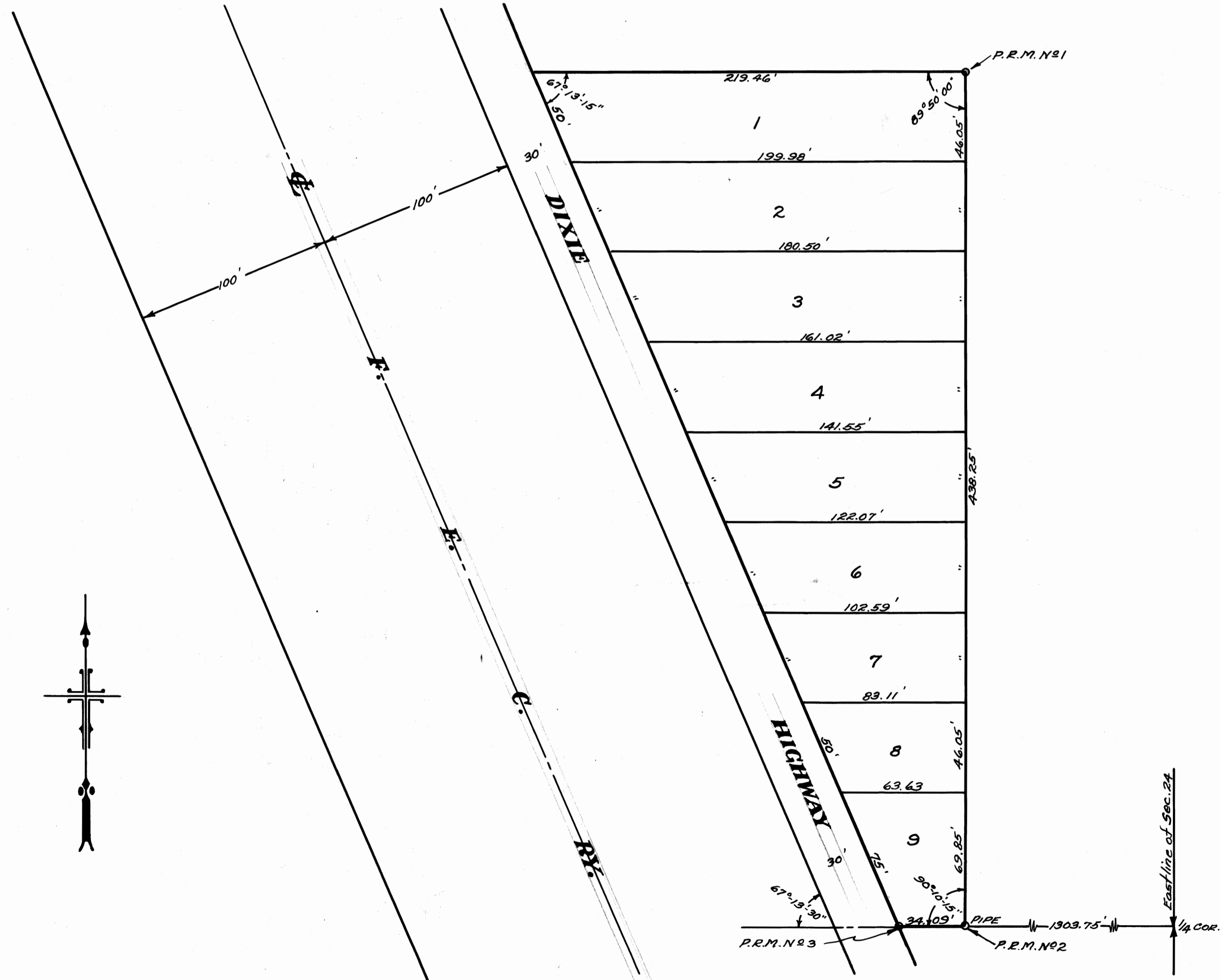


# DIXIE TERRACE

BEING A SUBDIVISION OF LOT 8 OF THE RESUBDIVISION  
OF BLOCK 7 OF HYLAND TERRACE ACRES

**IN SEC. 24 T.40S. R.42E.**  
**MARTIN COUNTY, FLA.**

BRIDGEMAN & ALLEN INC.  
ENGINEERS  
307 GARDENIA ST.  
WEST PALM BEACH FLA.  
APRIL 1926 SCALE: 1 in. = 40 ft.



This is a true copy of the original Plat  
of Record of "DIXIE TERRACE" Plat Book 1,  
Page 49, Martin County, Florida.

*Joseph J. Penelle*  
Registered Land Surveyor  
Florida Certificate No. 665

STATE OF FLORIDA }  
COUNTY OF MARTIN }  
This instrument was filed for  
Record at 11:25 this 28 day of April 1926  
and duly recorded on the 28 day of  
April 1926, in Book 1 of Plats on  
Page 49, Record Verified.

*J.R. Romero*  
CLERK CIRCUIT COURT  
BY: \_\_\_\_\_  
DEPUTY CLERK

STATE OF FLORIDA }  
COUNTY OF PALM BEACH } S.S.

KNOW ALL MEN BY THESE PRESENTS THAT we  
Beth B. Bowers, also Wallace S. Kimble and Gertrude Kimble  
his wife, owners of the land shown hereon, have caused Kimble,  
Lot 8 of Block 7 of Hyland Terrace Acres to be subdivided, surveyed  
and platted as shown hereon.

IN WITNESS WHEREOF we have hereunto set our  
hand and seal this 21st day of April A.D. 1926 at West Palm Beach, Fla.

Signed, sealed and delivered  
in the presence of:-  
*N.S. Williams*  
*E.H. Allen*  
*W.B. Beam*

*Beth B. Bowers*  
*Wallace S. Kimble*  
*Gertrude Kimble*

STATE OF FLORIDA }  
COUNTY OF PALM BEACH } S.S.

I HEREBY CERTIFY that on this day personally  
appeared before me Beth B. Bowers, also Wallace S. Kimble and  
Gertrude Kimble, to me personally known, and they acknowledged  
that they executed the foregoing dedication, freely and voluntarily  
for the purpose therein expressed, and that Gertrude Kimble,  
personally known to me, appeared before me apart from her  
husband - Wallace S. Kimble - acknowledged that she executed  
the foregoing dedication freely and voluntarily without compulsion,  
constraint, apprehension or fear, for the purpose therein expressed.

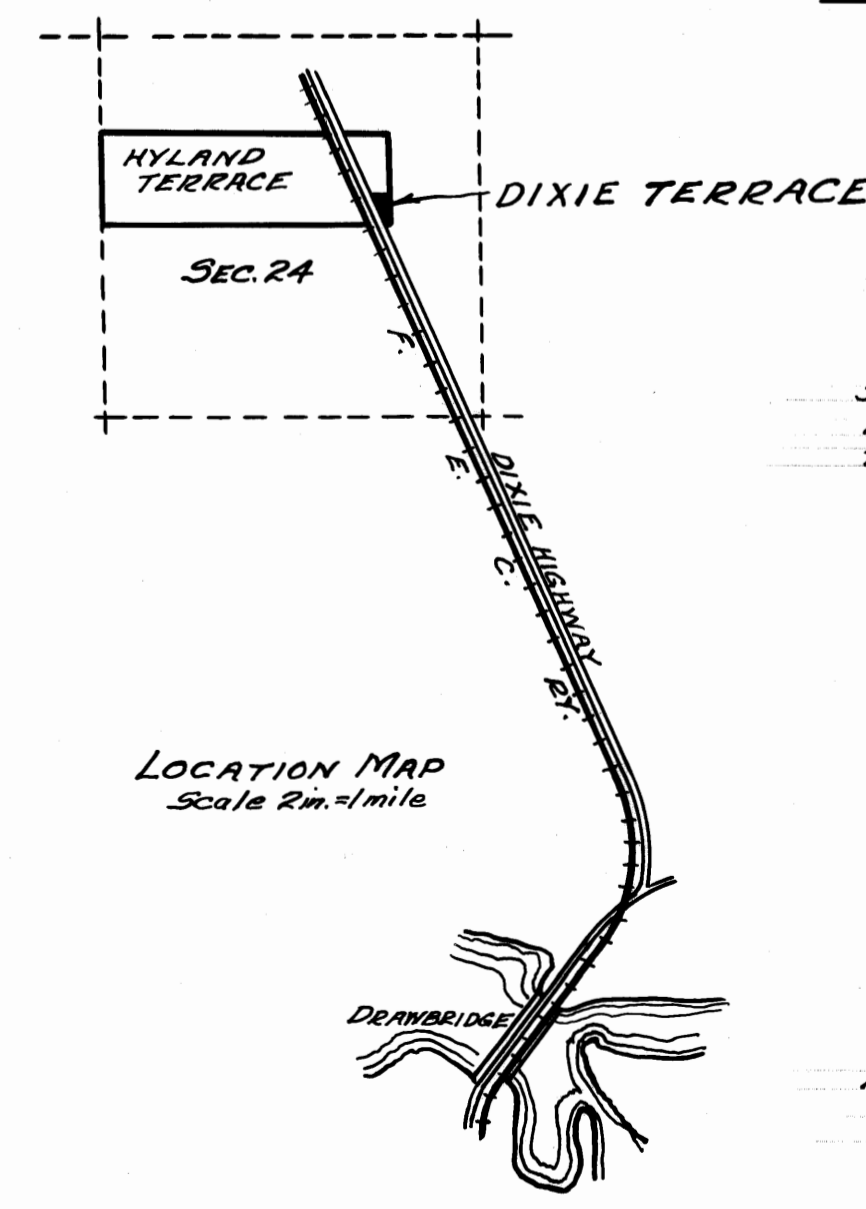
IN WITNESS WHEREOF I have hereunto set my  
hand and official seal at West Palm Beach, Palm Beach County, Florida,  
this 21st day of April 1926.

*Eugene M. Redelsheimer*  
Notary Public  
My Commission expires:-  
*January 18-1929*

STATE OF FLORIDA }  
COUNTY OF PALM BEACH } S.S.

WE HEREBY CERTIFY that the attached plat is a  
true and correct representation of a survey made under our  
direction, and that it is accurate to the best of our knowledge  
and belief.

BRIDGEMAN & ALLEN INC.  
*Thornton Bridgeman*  
Fla. Cert. #2593



Subscribed and sworn to before  
me at West Palm Beach, Florida,  
this the 21st day of April, A.D. 1926  
*Eugene M. Redelsheimer*  
Notary Public  
My Commission expires:-  
*January 18-1929*

Approved BY THE BOARD OF  
COUNTY COMMISSIONERS  
*Wm. H. Root*  
COUNTY SURVEYOR APRIL 27, 1926