

This is a true copy of the Original Plat of Record of "HYLAND TERRACE ACRES" Plat Book 1, Page 48, Martin County, Florida

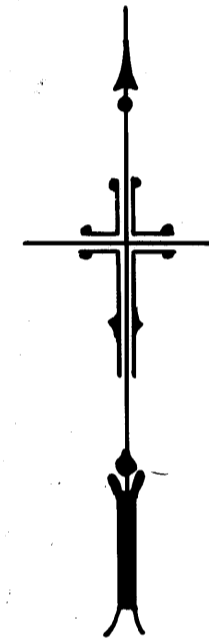
Joseph Freeman  
Registered Land Surveyor  
Florida Certificate No. 665

STATE OF FLORIDA }  
COUNTY OF MARTIN } ss  
This Instrument was filed for Record at 11:00 this 28 day of April 1926, and duly recorded on the 28 day of April 1926, in Book 1, of Plats on Page 48. Record Verified.  
J.R. Dameron  
CLERK CIRCUIT COURT  
BY: \_\_\_\_\_  
DEPUTY CLERK

# AMENDED PLAT TO HYLAND TERRACE PROPERTIES IN SEC. 24 T.40S. R.42E. MARTIN COUNTY, FLA.

FOR THE PURPOSE OF NAMING THE TWO BLOCKS DIRECTLY NORTH OF BLOCKS 2-3-4-5 ALSO RETAINING THE BLOCK NUMBER OF THAT PORTION EAST OF THE F. E. C. RAILROAD BEING A RESUBDIVISION OF BLOCK 7 OF HYLAND TERRACE ACRES FILED IN BOOK 3, PAGE 33, ON THE 10<sup>TH</sup> DAY OF JULY 1922 IN THE COURTHOUSE OF PALM BEACH CO. FLA.

BRIDGEMAN AND ALLEN INC.  
ENGINEERS  
307 GARDENIA ST.  
WEST PALM BEACH FLA.  
APRIL 1926 ~ ~ ~ SCALE: 1 in. = 200 ft.

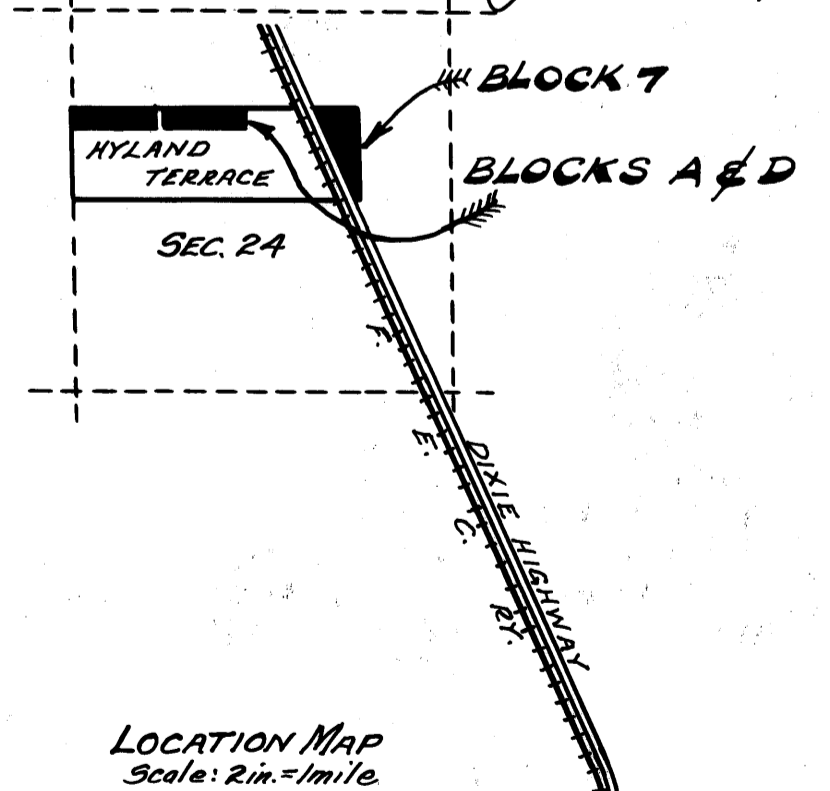
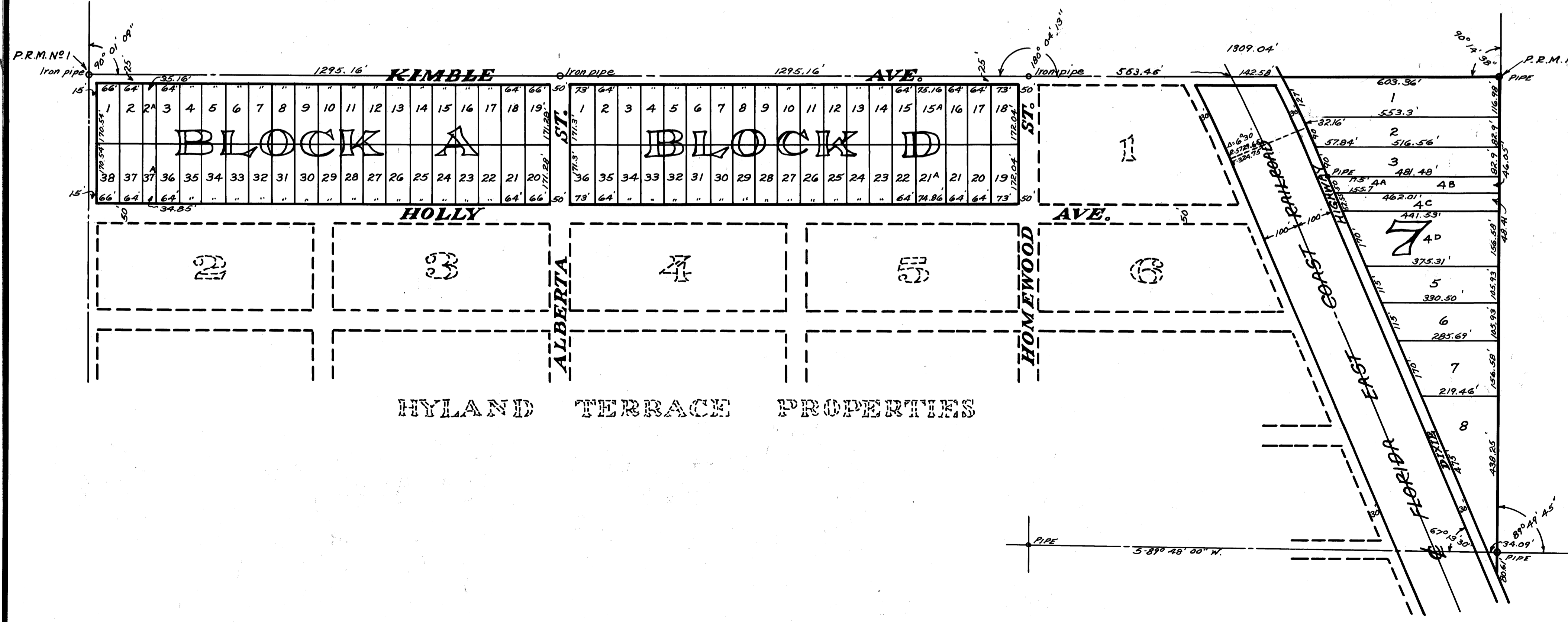


STATE OF FLORIDA }  
COUNTY OF PALM BEACH } s.s.  
KNOW ALL MEN BY THESE PRESENTS that we Beth B. Bowers and Wallace S. Kimble and Gertrude Kimble his wife owners of the land shown hereon have caused the amendments to be made as shown hereon for the purposes of numbering the two blocks as shown hereon as Block A and Block D also the resubdivision of Block 7 of Hyland Terrace Acres, have caused said land to be surveyed and platted as shown hereon and placed on record with the clerk of the court house at Stuart, Martin County, Florida.  
IN WITNESS WHEREOF we have hereunto set our hands and seals this 21st day of April A.D. 1926 at West Palm Beach, Florida.  
signed sealed and delivered in the presence of:-  
B. H. Allen Beth B. Bowers  
H. S. Williams Wallace S. Kimble  
K. B. Ream Gertrude Kimble

STATE OF FLORIDA }  
COUNTY OF PALM BEACH } s.s.  
I HEREBY CERTIFY that on this day personally appeared before me Beth B. Bowers, also Wallace S. Kimble and Gertrude Kimble to me personally known, and they acknowledged that they executed the foregoing dedication freely and voluntarily for the purpose therein expressed: and that Gertrude Kimble, personally known to me, appeared before me apart from her husband - Wallace S. Kimble, acknowledged that she executed the foregoing dedication freely and voluntarily without compulsion, constraint apprehension or fear, for the purposes therein expressed.  
IN WITNESS WHEREOF I have hereunto set my hand and official seal at West Palm Beach, Palm Beach County, Florida this 21st day of April, A.D. 1926  
Sigmund Reesheimer  
Notary Public  
My Commission expires:-  
January 18-1929

STATE OF FLORIDA }  
COUNTY OF PALM BEACH } s.s.  
WE HEREBY CERTIFY that the attached plat is a true and correct representation of a survey made under our direction and that it is accurate to the best of our knowledge and belief  
BRIDGEMAN & ALLEN INC.  
Thurston Bridgeman  
Fla. Cert. No. 575

Subscribed and sworn to before me at West Palm Beach, Florida, this the 21st day of April, A.D. 1926  
Sigmund Reesheimer  
Notary Public  
My Commission expires:-  
January 18-1929



APPROVED BY THE BOARD OF COUNTY COMMISSIONERS  
Wm. H. Root  
COUNTY SURVEYOR - APRIL 21, 1926