

HARBRECHT HEIGHTS

STUART MARTIN CO. FLORIDA

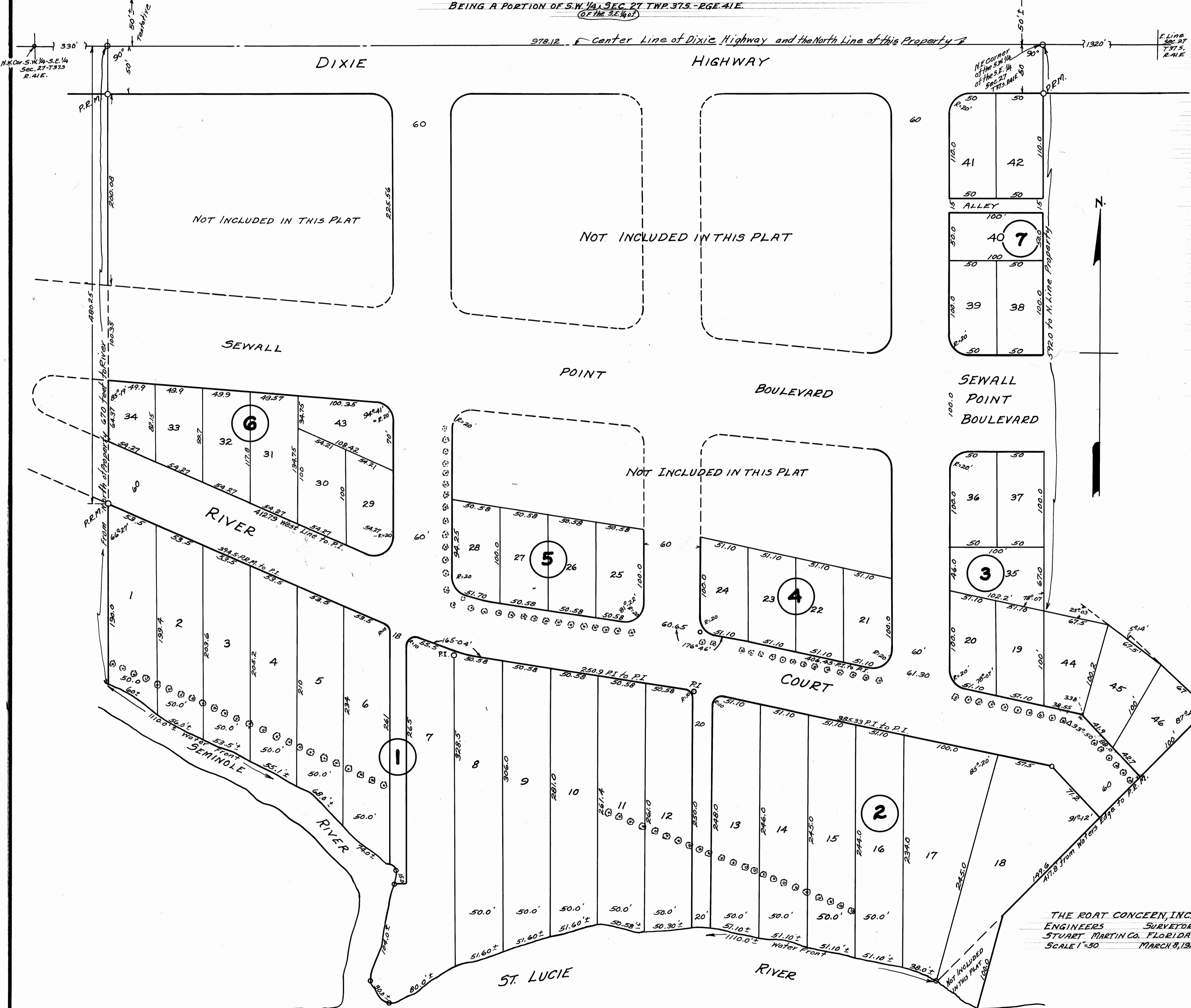
BEING A PORTION OF S.W. 1/4 SEC. 27 TWP. 37S. - RGE. 41E.
(OF THE 3E. 1/4)

This is a true copy of the Original Plat of Record of "HARBRECHT HEIGHTS" Plat Book 3, Page 43, Martin County, Florida

Donald C. Ebert
Registered Land Surveyor
Florida Certificate No. 665

STATE OF FLORIDA }
COUNTY OF MARTIN }
This instrument was filed for record at 4:30 P.M. this 25th day of March, 1926 and duly recorded on the 25th day of March, 1926, in Book 3, of Plats on Page 43, Record Verified.

J. J. McMeroy
CLERK CIRCUIT COURT
BY: _____
DEPUTY CLERK.



DEDICATION

STATE OF FLORIDA }
COUNTY OF MARTIN }
KNOW ALL MEN BY THESE PRESENTS:

That the Stuart Bank & Trust Company, a corporation organized and existing under the laws of the STATE OF FLORIDA, trustee, owner in fee simple of the tract of land shown on this plat as HARBRECHT HEIGHTS and more particularly described as follows: Beginning at a point on the north line of the S.W. 1/4 of the S.E. 1/4 of Sec. 27 Twp. 37S., R. 41E., said point being 330 feet east of N.M. corner of said S.W. 1/4 of the S.E. 1/4, thence deflecting 90° to the right and south a distance of 670 feet more or less to the water's edge of Seminole River, thence by a meander line along the water's edge of said river and of the St. Lucie River in a south and easterly direction to the west line of the Harbrecht Homesite; thence northeast along said west line of Harbrecht's Homesite a distance of 417.8 feet more or less; thence deflecting 92° 45' left and northwesterly, 67 feet; thence deflecting 5° 14' to the left for 675 feet; thence deflecting 25° 03' to the left for 67.5 feet more or less to the east line of the S.W. 1/4 of the S.E. 1/4 of Sec. 27 - Twp. 37S., R. 41E.; thence North along last described line, 592 feet to the N.E. corner of said S.W. 1/4 of S.E. 1/4; thence deflecting 90° to the left for 978.12 feet to the place of beginning. With full riparian rights on the Seminole and St. Lucie Rivers, Excepting that area designated as 'Not included in this plat', have caused the said land to be surveyed and platted and does hereby dedicate to the perpetual use of the public as public highways the streets and alleys shown hereon reserving unto itself the reversion and reversions thereof whenever the same shall be abandoned by the public or discontinued by law.

IN WITNESS WHEREOF, said STUART BANK & TRUST CO., trustee has caused these presents to be signed on its behalf by its President and attested by its Cashier and its corporate seal affixed this 10th day of March A.D. 1926.

Attest Percy Fuge Cashier
STUART BANK & TRUST CO.
By G. U. Fuge President

ACKNOWLEDGEMENT

STATE OF FLORIDA }
COUNTY OF MARTIN }
I HEREBY CERTIFY, that on this 10th day of March A.D. 1926 before me personally appeared E. A. Fuge, President, and Percy Fuge, Cashier of the STUART BANK & TRUST COMPANY, a corporation organized and existing under the laws of the State of Florida, to me well known to be the persons described in, and who executed the foregoing dedication and severally acknowledged the execution thereof to be their free act and deed as such officers, for the uses and purposes therein expressed; and that they affixed thereto the official seal of said corporation, and said dedication is the act and deed of said corporation.

WITNESS, my hand and official seal at Stuart, in the County of Martin and the STATE OF FLORIDA, the day and year last aforesaid.
W. H. Crowell
Notary Public
My Commission expires May 23, 1927

AFFIDAVIT

STATE OF FLORIDA }
COUNTY OF MARTIN }
WE HEREBY CERTIFY, that we have surveyed and platted the tract of land shown on the attached plat as HARBRECHT HEIGHTS and that said plat is a correct representation thereof to the best of our knowledge and belief and permanent reference monuments have been placed as required by law.

attest A. S. Roak Secretary
THE ROAT CONCERN, INC.
By W. H. Roak President

SUBSCRIBED & SWORN to before me this 10th day of March, A.D. 1926
W. H. Crowell
Notary Public
My Commission expires May 23, 1927

This map checked with the present streets and the City's requirements and is hereby recommended to the Board of Commissioners for their approval.

Donald C. Ebert
City Engineer
Approved by the Board of Commissioners City of Stuart, this 25th day of March, 1926.

Attest Fred A. Spiers City Clerk
J. S. Taylor Chairman

Approved by the Planning Board City of Stuart
W. H. Roak
Chairman

Secretary

Approved by COUNTY SURVEYOR this 22nd day of March, 1926
W. H. Roak
County Surveyor

THE ROAT CONCERN, INC.
ENGINEERS SURVEYORS
STUART MARTIN CO. FLORIDA.
SCALE 1"=50' MARCH 8, 1926.