

This right of way map when recorded is an instrument of conveyance, transferring in accordance with the Florida Statute 337.29, all right, title, and interest in the road, street, or highway shown herein, from the Florida Department of Transportation to Martin County.

PALM CITY FARMS PLAT BOOK 6, PAGE 42 (Palm Bch. Co.)

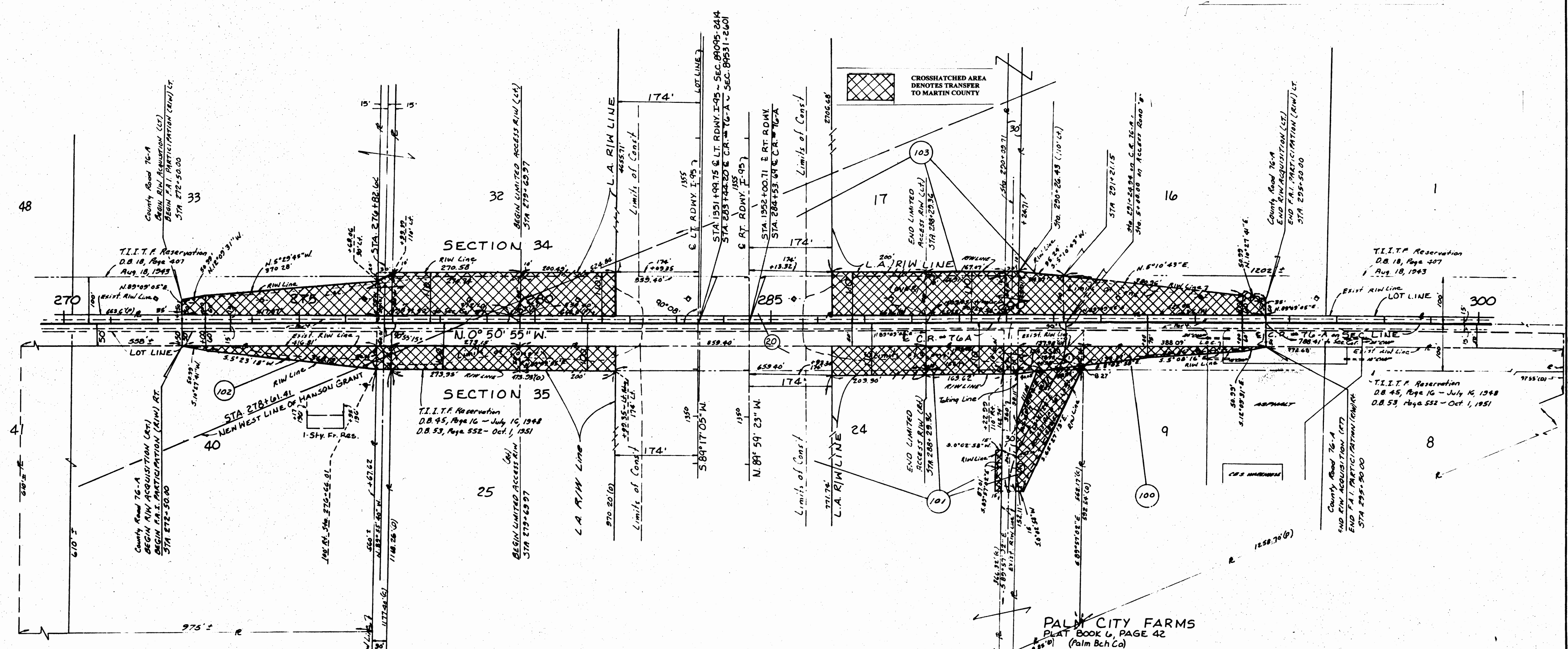
Recorded in Public Records of Martin County, Florida, this day 5th of October A.D. 2016, in Map Book 1, Page 16. Sheet 2 of 2

for Rose Kennedy, Deputy Clerk Clerk of the Circuit Court Martin County, Florida



The limits of this roadway transfer for Section 89095-2414 SR (I-95) 9 to Access Road known as S.W. Citrus Blvd., as crosshatched below.

SCALE: 1 inch = 100 feet



ACCESS ROAD 'B' PI STA 5+71.00 Δ 76°29'33" R D 38+11.50 T 36.00 L 70.87 R 150.00 PC STA 7+55.00 PT STA 6+05.67

ACCESS ROAD 'B' PI STA 8+34.14 Δ 26°05'40" D 34.56+40 T 83.50 L 144.75 R 230.00 PC STA 7+80.84 PT STA 8+85.53

FLORIDA DEPARTMENT OF TRANSPORTATION RIGHT OF WAY ENGINEERING SECTION 1-10-86 RIGHT OF WAY MAP STATE ROAD NO 9(I-95) MARTIN COUNTY. Includes drawing, tracing, and checking dates and names.

Table with columns: REVISION, BY, DATE, and other project details.