

STAMFORD AT SUNSET PLACE
P.B. 11, PG. 11

This right of way map when recorded is an Instrument of conveyance, transferring in accordance with the Florida Statutes 337.29, all right, title, and interest in the road, street, or highway shown herein, from the Florida Department of Transportation to Martin County.

Recorded in Public Records of Martin County, Florida, this 23rd day of August, A.D. 2016.
In Road Plot Book 1, Page 15, page 5 of 15

Bea Maloney
Clerk of the Circuit Court
Martin County, Florida



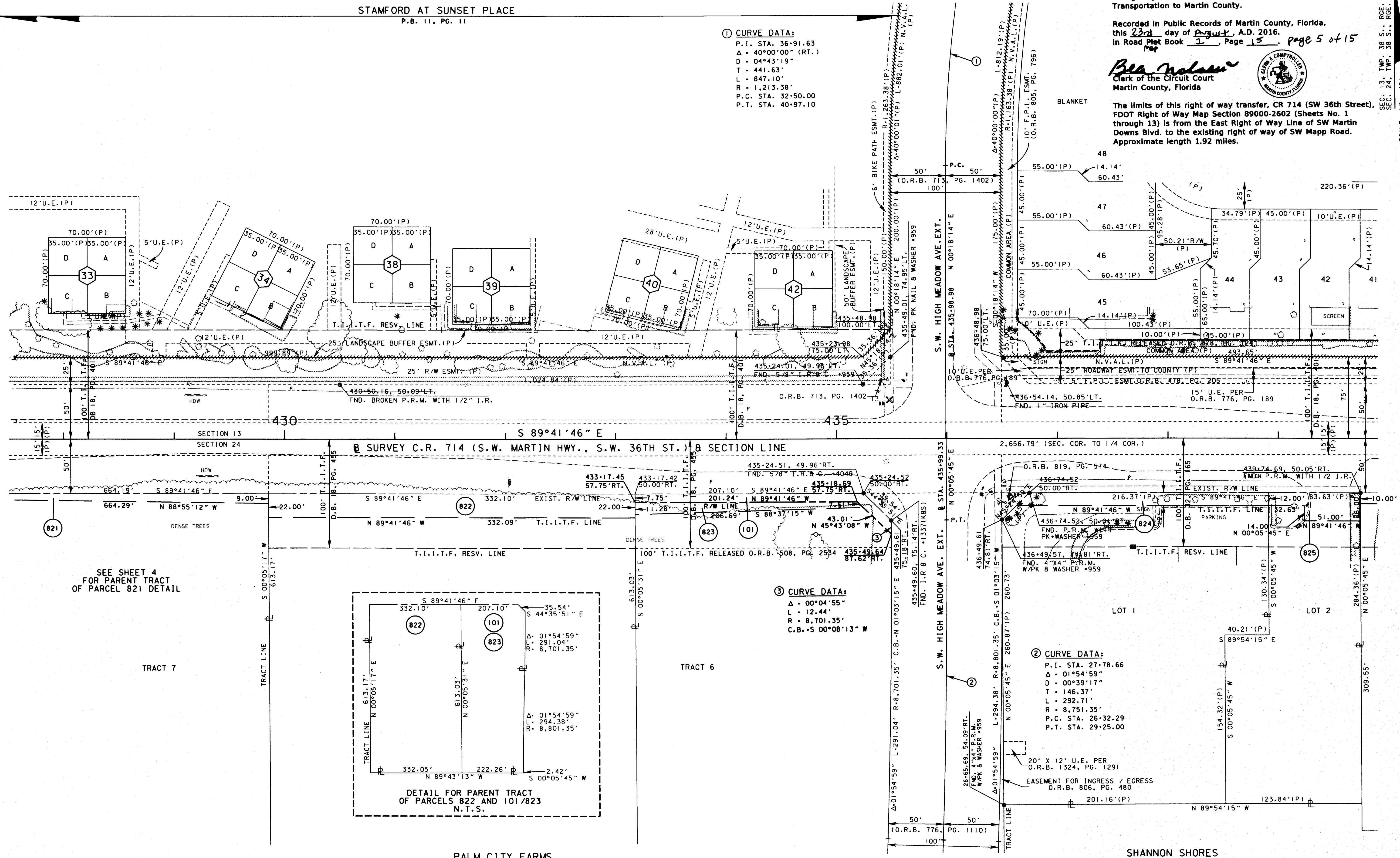
The limits of this right of way transfer, CR 714 (SW 36th Street), FDOT Right of Way Map Section 89000-2602 (Sheets No. 1 through 13) is from the East Right of Way Line of SW Martin Downs Blvd. to the existing right of way of SW Mapp Road. Approximate length 1.92 miles.

SEC. 13, TWP. 38 S., RGE. 40 E.
SEC. 24, TWP. 38 S., RGE. 40 E.
SCALE: 1" = 40'

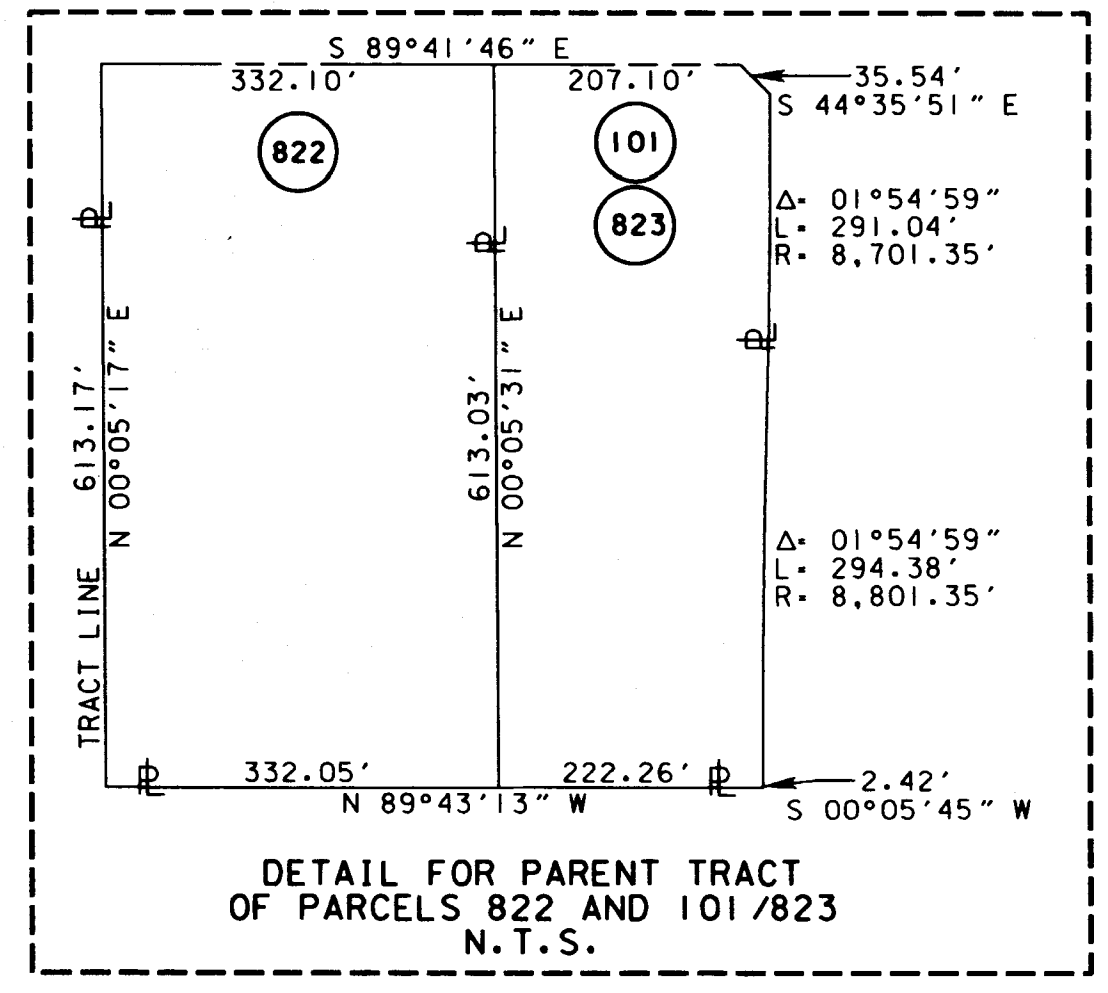
① CURVE DATA:
P.I. STA. 36+91.63
Δ = 40°00'00" (RT.)
D = 04°43'19"
T = 441.63'
L = 847.10'
R = 1,213.38'
P.C. STA. 32+50.00
P.T. STA. 40+97.10

③ CURVE DATA:
Δ = 00°04'55"
L = 12.44'
R = 8,701.35'
C.B. = S 00°08'13" W

② CURVE DATA:
P.I. STA. 27+78.66
Δ = 01°54'59"
D = 00°39'17"
T = 146.37'
L = 292.71'
R = 8,751.35'
P.C. STA. 26+32.29
P.T. STA. 29+25.00



SEE SHEET 4 FOR PARENT TRACT OF PARCEL 821 DETAIL



PALM CITY FARMS
P.B. 6, PG. 42
(PALM BEACH COUNTY RECORDS)

SHANNON SHORES
P.B. 14, PG. 94

UNINCORPORATED MARTIN COUNTY

NOT A SURVEY

SEE SHEET ONE FOR LEGEND AND GENERAL NOTES

C.R. 714 (S.W. MARTIN HWY.) FROM THE FLORIDA TURNPIKE TO S.E. WILLOUGHBY BLVD.

RIGHT OF WAY MAP

FLORIDA DEPARTMENT OF TRANSPORTATION
RIGHT OF WAY MAPPING

APPROVED: [Signature]
DATE: 2/23/09
DISTRICT RIGHT OF WAY SURVEYOR

REVISION	BY	DATE	BY	DATE
ADD 806/480	R.CHAVEZ	03-28-13		
ADD 2437/2575	R.CHAVEZ	08-02-12	PRELIM	DURYEA 04-12-02
1324/1291	R.CHAVEZ	03-30-12	FINAL	SANCHEZ 09-30-02
ADD SEGM. 230978.2	R.CHAVEZ	03-30-12	CHECKED	WILHELM 10-04-02

FED. PROJ. NO. SEE COVER SHEET
SECTION 89000-2602
COUNTY ROAD NO. 714
MARTIN COUNTY

MAPS PREPARED BY KEITH B. SCHNARS, P.A.
W.P.I. No. N/A
ITEM/SEGMENT No. 230978.2
FIELD BOOK NO. 15
SCALE: 1" = 40'
SHEET 5 OF 26