

LOCATION SKETCH
NOT TO SCALE

This right of way map when recorded is an instrument of conveyance, transferring in accordance with the Florida Statute 337.29, all right, title, and interest in the road, street, or highway shown herein, from the Florida Department of Transportation to Martin County.

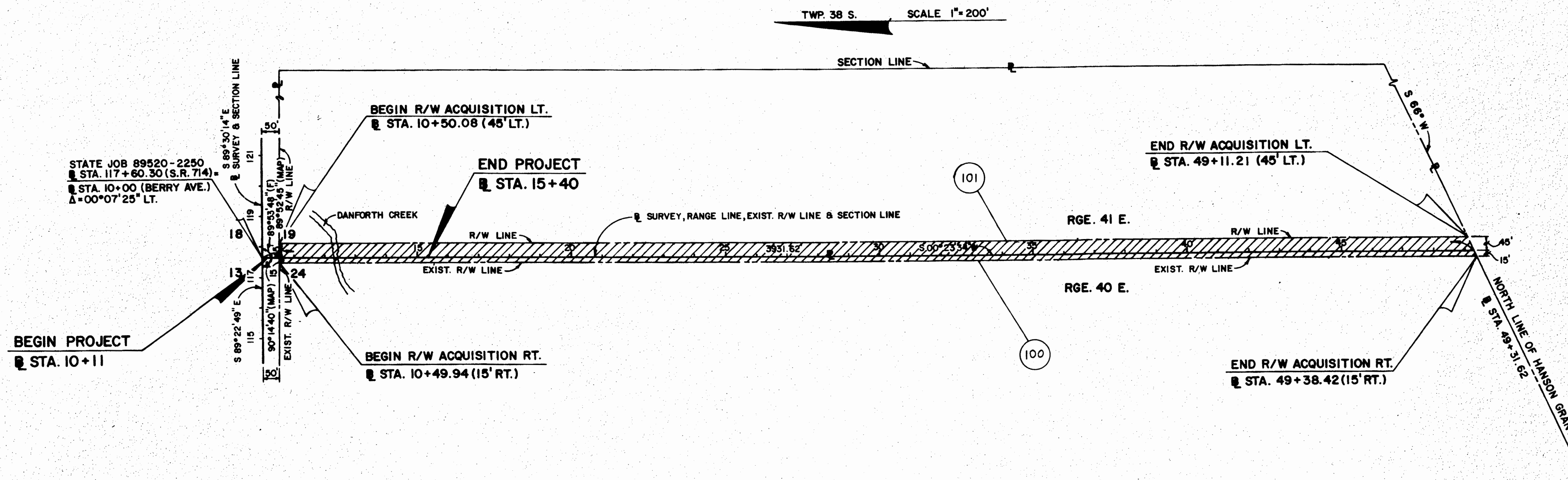
RD. DIST. NO.	SEAS.	F. A. PROJECT NO.	LOCAL ROAD	STATE ROAD
3	FLA.			

Recorded in Public Records of Martin County, Florida, this 14 day of May, A.D. 2010, in Record-Plat Book Page 11

MAP
NICK ANSEL
Clerk of the Circuit Court
Martin County, Florida



1 of 2



STATE JOB 89520-2250
STA. 117+60.30 (S.R. 714)
STA. 10+00 (BERRY AVE.)
Δ=00°07'25" LT.

BEGIN PROJECT
STA. 10+11

BEGIN R/W ACQUISITION RT.
STA. 10+49.94 (15' RT.)

BEGIN R/W ACQUISITION LT.
STA. 10+50.08 (45' LT.)

END PROJECT
STA. 15+40

END R/W ACQUISITION LT.
STA. 49+11.21 (45' LT.)

END R/W ACQUISITION RT.
STA. 49+38.42 (15' RT.)

HATCHED AREA TRANSFER TO MARTIN COUNTY

NOTE: THE BEARING S 66°W THAT IS SHOWN ON THE NORTH OF THE HANSON GRANT & THE DISTANCE 3931.62' WERE TAKEN FROM THE GOVERNMENT SURVEYS FOR MARTIN COUNTY, 59.57 CHAINS ALONG THE WEST LINE OF SECTION 19 TWP. 38 S., RGE. 41 E.

B.I. No. 426115

TABLE OF OWNERSHIPS						
PARCEL NO.	SHEET NO.	NAME	AREA TAKEN	REMAINDER		COMMENTS
				LEFT	RIGHT	
100	1, 2	MARTIN COUNTY	1.337 Ac.	—	—	Q.C.D.
101	1, 2	AMERICAN LAND RESOURCES, INC.	4.010 Ac.	313.91 Ac.	0	DONATION

"KEY MAP"

STATE OF FLORIDA DEPARTMENT OF TRANSPORTATION			
RIGHT OF WAY MAP			
STATE ROAD NO.		MARTIN COUNTY	
DRAWN BY	DATE	APPROVED BY	DATE
KANE	AUG. '82	<i>John J. Kane</i>	9/15/82
TRACED BY	DATE	DISTRICT R/W ENGINEER	
GRAY	SEPT. '82	<i>W.A.C.</i>	9-21-82
ENGINEER OF RIGHT OF WAY			
STATE HIGHWAY ENGINEER			
MISC. REV.	HINKLE	1-8-83	
REVISION	BY	DATE	
SECTION 89000-2610			SHEET 1 OF 2