

TOWNSHIP 39 SOUTH

RANGE 41 EAST

Base Line
 This right of way map when recorded is an instrument of conveyance, transferring in accordance with the Florida Statute 337.29, all right, title, and interest in the road, street, or highway shown herein, from the Florida Department of Transportation to Martin County.

Recorded in Public Records of Martin County, Florida, this day 19 May A.D. 2009 in Map Book 1, Page 9

Nicholas
 Clerk of the Circuit Court
 Martin County, Florida

The limits of this roadway transfer for Section 89095-2412 SR (I-95) 9 in Access Road No. 5, (now known as S.W. Lost River Road), as hatched below.

F.A. PROJECT NO.
 I-95-2(50)100

1 of 3

SCALE: 1 inch = 100 feet

Base Line
 Ramp
 P.I. STA. 20+15.84
 Δ 14°35'38"
 D 14.80
 T 489.11
 L 972.32
 R 3813.72
 P.C. STA. 15+26.73
 P.T. STA. 24+99.65

CURVE DATA LT. RDWY.
 P.I. STA. 1204+47.21
 Δ 74°20'42" LT.
 D 0°30'
 T 8689.29
 L 14868.98
 R 11459.16
 P.C. STA. 1117+57.92
 P.T. STA. 1266+26.90

CURVE DATA RT. RDWY.
 P.I. STA. 1203+33.47
 Δ 73°37'09" LT.
 D 0°30'
 T 8575.55
 L 14723.86
 R 11459.16
 P.C. STA. 1117+57.92
 P.T. STA. 1264+81.70

Base Line
 Ramp
 P.I. STA. 1306+48.67
 Δ 9°00' LT.
 D 150.31
 T 1909.86
 L 378.36
 R 1307+98.36

Base Line
 Ramp
 P.I. STA. 1325+00.42
 Δ 18°30' LT.
 D 999.12
 T 1850.00
 L 5729.578
 R 1315+67.30
 P.T. STA. 1334+17.30

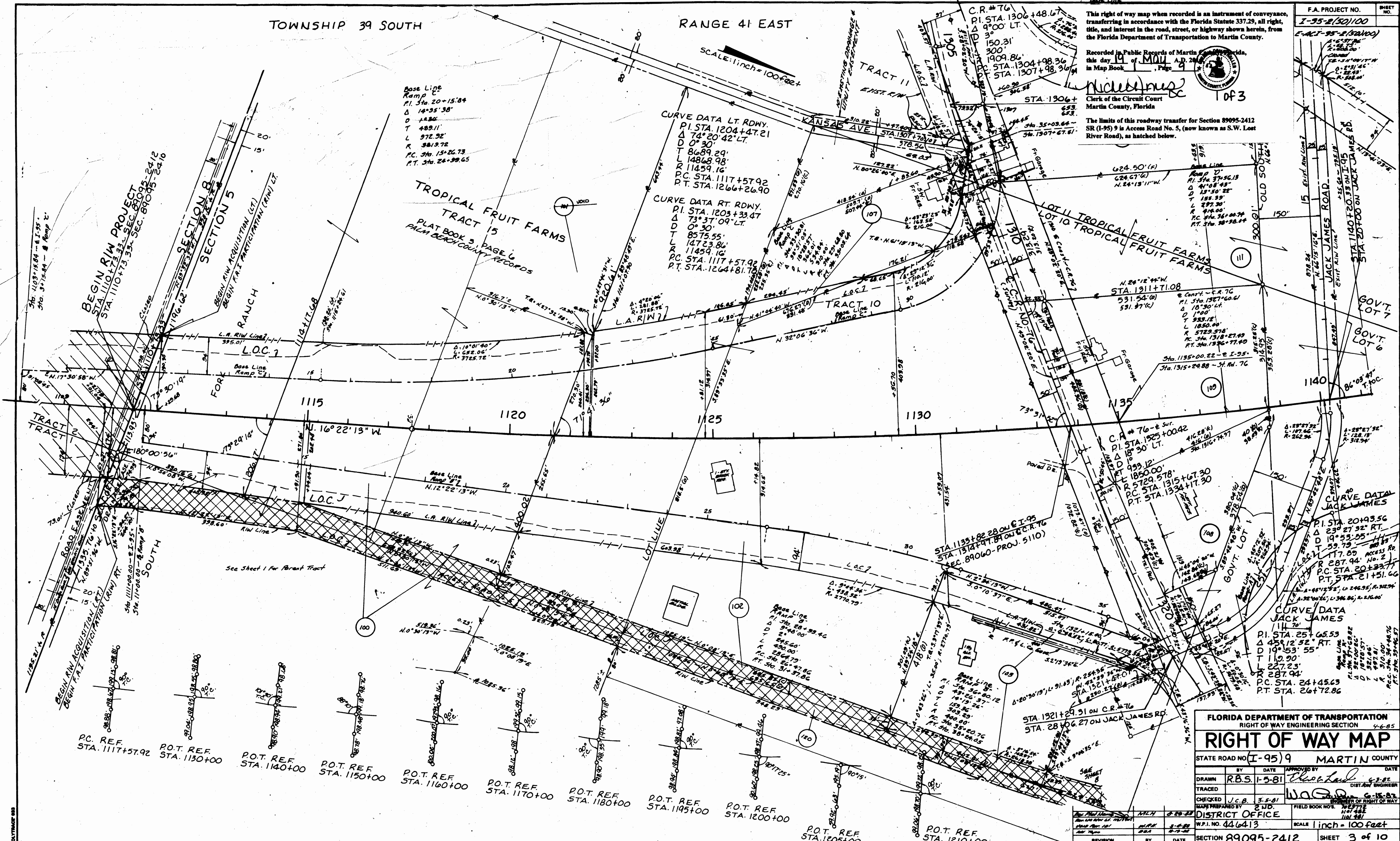
Base Line
 Ramp
 P.I. STA. 1351+07.01
 Δ 10°30' LT.
 D 1000
 T 1850.00
 L 5729.578
 R 1315+67.30
 P.T. STA. 1334+17.30

Base Line
 Ramp
 P.I. STA. 1351+07.01
 Δ 10°30' LT.
 D 1000
 T 1850.00
 L 5729.578
 R 1315+67.30
 P.T. STA. 1334+17.30

Base Line
 Ramp
 P.I. STA. 1351+07.01
 Δ 10°30' LT.
 D 1000
 T 1850.00
 L 5729.578
 R 1315+67.30
 P.T. STA. 1334+17.30

Base Line
 Ramp
 P.I. STA. 1351+07.01
 Δ 10°30' LT.
 D 1000
 T 1850.00
 L 5729.578
 R 1315+67.30
 P.T. STA. 1334+17.30

Base Line
 Ramp
 P.I. STA. 1351+07.01
 Δ 10°30' LT.
 D 1000
 T 1850.00
 L 5729.578
 R 1315+67.30
 P.T. STA. 1334+17.30



FLORIDA DEPARTMENT OF TRANSPORTATION
 RIGHT OF WAY ENGINEERING SECTION 4-6-85

RIGHT OF WAY MAP

STATE ROAD NO. (I-95) 9 MARTIN COUNTY

DRAWN	BY	DATE	APPROVED BY	DATE
TRACED	R.B.S. 1-5-81	1-5-81	<i>[Signature]</i>	5-2-82
CHECKED	J.C.B.	3-5-81	<i>[Signature]</i>	5-15-82
REVISIONS	BY	DATE	FIELD BOOK NO.	1101-281
			W.P.I. NO.	446413
			SCALE	1 inch = 100 feet
			SECTION	89095-2412
			SHEET	3 of 10

5 POLYMER 63