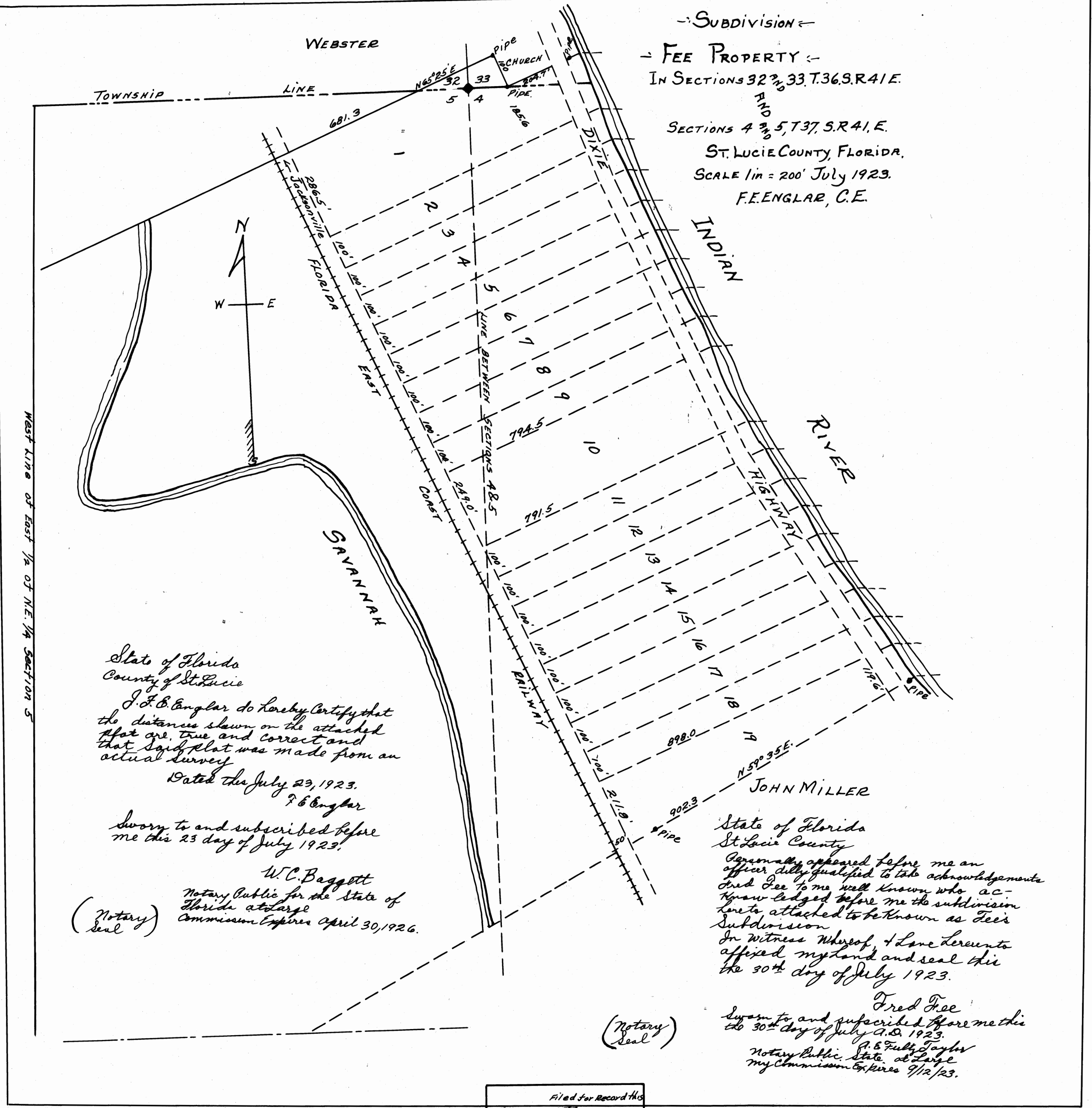


This is a true Copy of the Original Plat of Record of "FEE PROPERTY" Plat Book 4, Page 44, ST. LUCIE COUNTY, FLORIDA, NOW MARTIN COUNTY.

Fred A. Stafford  
REGISTERED LAND SURVEYOR  
FLORIDA CERTIFICATE NO. 443



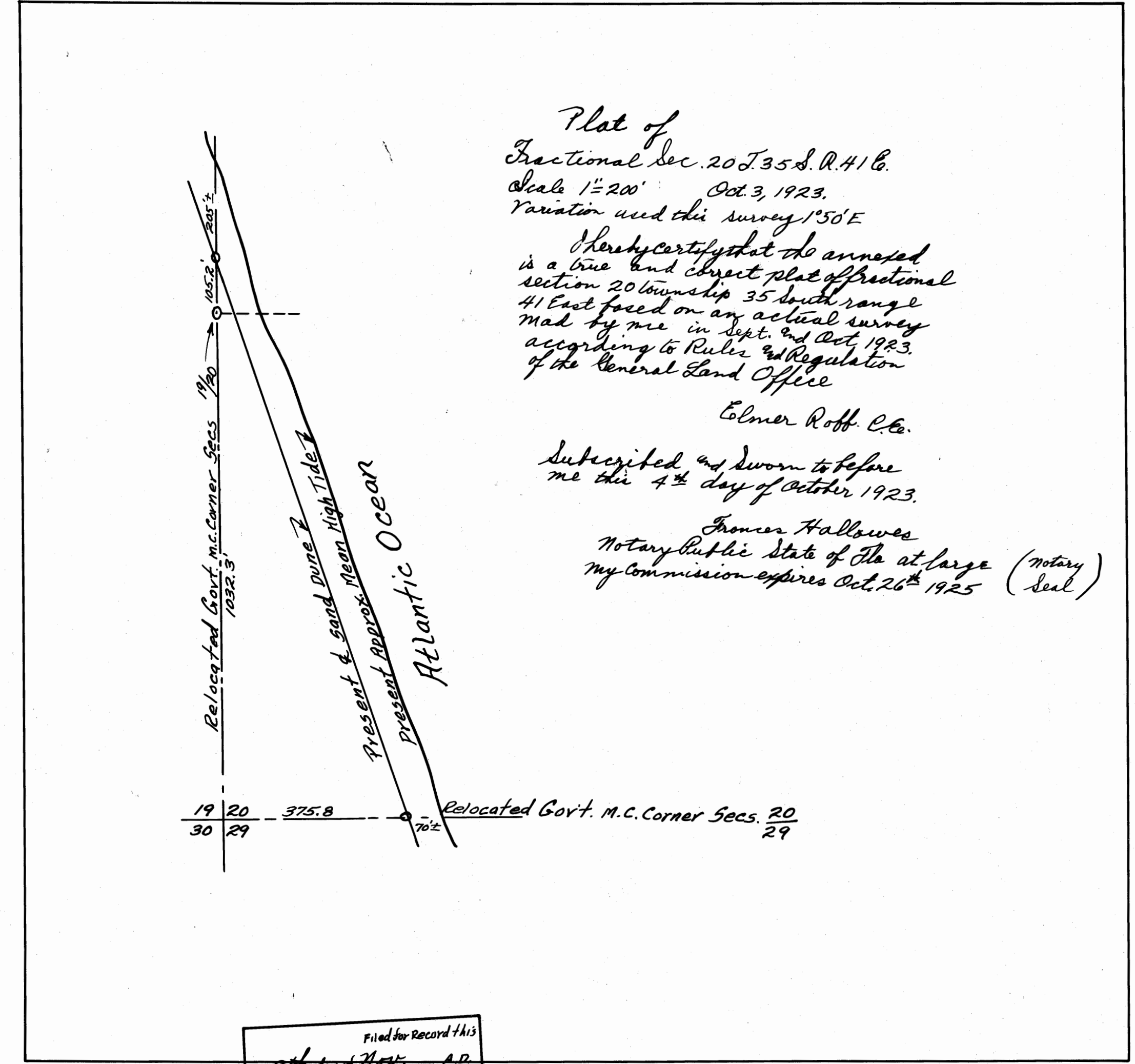
— SUBDIVISION —  
— FEE PROPERTY —  
IN SECTIONS 4, 5, 7, 37, S.R. 41, E.  
AND  
SECTIONS 4, 5, 7, 37, S.R. 41, E.  
ST. LUCIE COUNTY, FLORIDA.  
SCALE 1" = 200' July 1923.  
F.E. ENGLAR, C.E.

State of Florida  
County of St. Lucie  
J. F. Englar do hereby certify that the distances shown on the attached plat are true and correct and that said plat was made from an actual survey.  
Dated the July 23, 1923.  
J. F. Englar  
Sworn to and subscribed before me this 23 day of July 1923.  
W. C. Baggett  
Notary Public for the State of Florida at large  
Commission Expires April 30, 1926.  
(Notary Seal)

State of Florida  
St. Lucie County  
Cognately appeared before me an officer duly qualified to take acknowledgments and one to my well known who acknowledge before me the subdivision here attached to be known as Fee's Subdivision.  
In witness whereof I have hereunto affixed my hand and seal this the 30th day of July 1923.  
Fred Free  
Sworn to and subscribed before me this the 30th day of July A.D. 1923.  
P. E. Fuller Taylor  
Notary Public, State at Large  
My Commission Expires 9/12/23.  
(Notary Seal)

Filed for Record this  
30 day of JULY A.D.  
1923 at 12 o'clock P.M. and  
Recorded in Vol. 4 at  
Page 44 of Plat  
Record, and verified by  
P. C. ELDRED,  
Clerk Circuit Court.  
By \_\_\_\_\_ Deputy Clerk  
ST. LUCIE COUNTY, FLORIDA.  
Fool

(Ct Ct Seal)



Plat of  
Fractional Sec. 20 T. 35 S. R. 41 E.  
Scale 1" = 200' Oct. 3, 1923.  
Variation used this survey 1° 50' E.  
I hereby certify that the annexed is a true and correct plat of fractional section 20 township 35 south range 41 East based on an actual survey made by me in Sept. and Oct. 1923, according to Rules and Regulations of the General Land Office.  
Colmer Roff, C.E.  
Subscribed and sworn to before me this 4th day of October 1923.  
Thomas Halliwell  
Notary Public State of Florida at large  
My Commission Expires Oct. 26th 1925 (Notary Seal)

Relocated Govt. M.C. Corner Secs. 19 20 30 29 375.8 702 Relocated Govt. M.C. Corner Secs. 20 29

Filed for Record this  
4th day of OCTOBER A.D.  
1923 at 2 o'clock P.M. and  
Recorded in Vol. 4 at  
Page 44 of Plat  
Record, and verified by  
P. C. ELDRED  
Clerk Circuit Court.  
By \_\_\_\_\_ Deputy Clerk  
ST. LUCIE COUNTY, FLORIDA.  
Fool

(Ct Ct Seal)