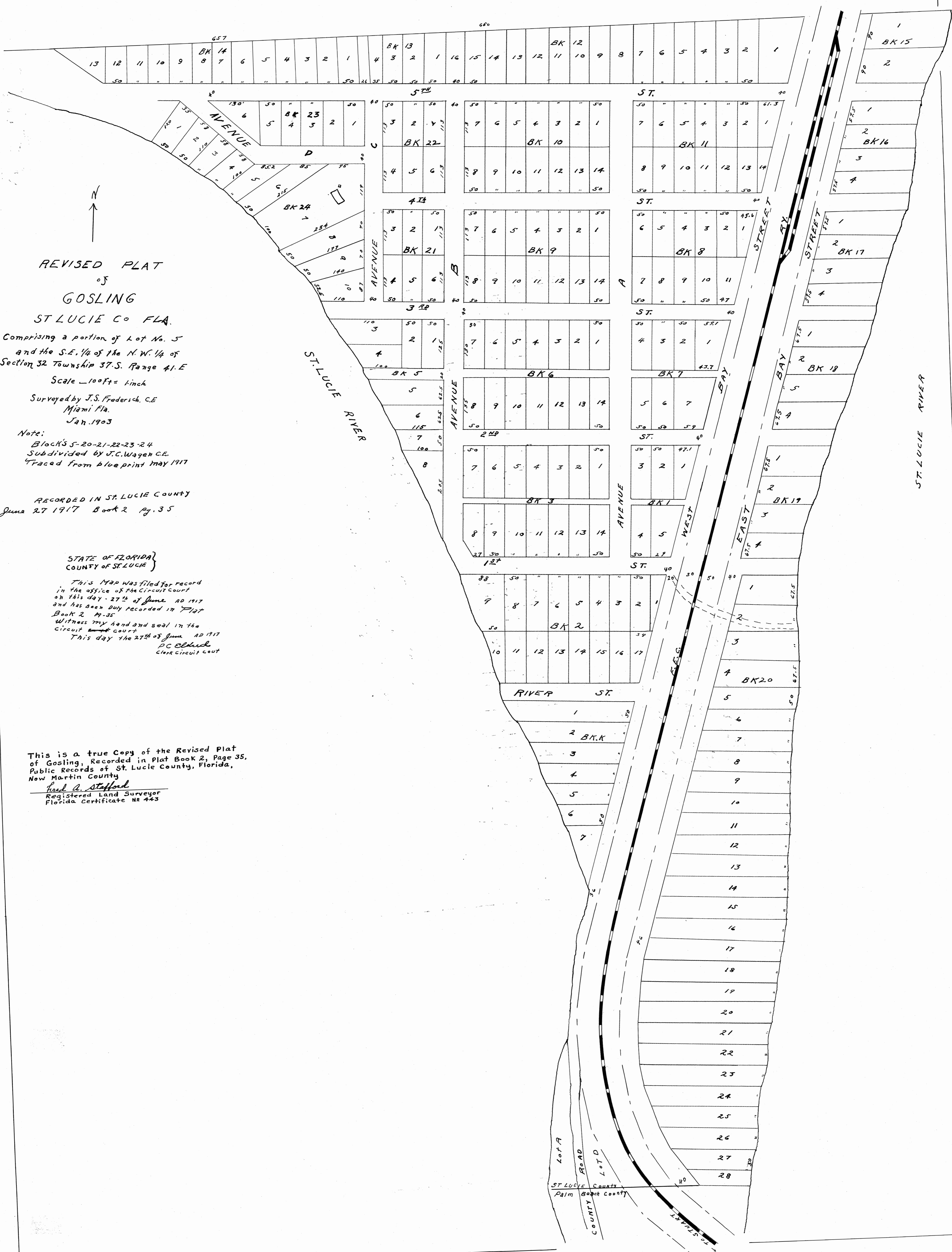


S.L. 10.2-35



REVISED PLAT
of
GOSLING

ST LUCIE CO FLA.

Comprising a portion of Lot No. 5
and the S.E. 1/4 of the N.W. 1/4 of
Section 32 Township 37.S. Range 41.E

Scale - 100ft = 1 inch

Surveyed by J.S. Friedrich, C.E.
Miami Fla.
Jan. 1903

Note:
Blocks 5-20-21-22-23-24
Subdivided by J.C. Wagon C.E.
Traced from blueprint May 1917

RECORDED IN ST. LUCIE COUNTY
June 27 1917 Book 2 Pg. 35

STATE OF FLORIDA
COUNTY OF ST. LUCIE

This Map was filed for record
in the office of the Circuit Court
on this day - 27th of June AD 1917
and has been duly recorded in
Book 2 Pg. 35
Witness my hand and seal in the
Circuit Court
This day the 27th of June AD 1917
D.C. Eldred
Clerk Circuit Court

This is a true Copy of the Revised Plat
of Gosling, Recorded in Plat Book 2, Page 35,
Public Records of St. Lucie County, Florida,
New Martin County
Fred A. Stafford
Registered Land Surveyor
Florida Certificate No 443

ST. LUCIE RIVER

ST LUCIE COUNTY
Palm Beach County