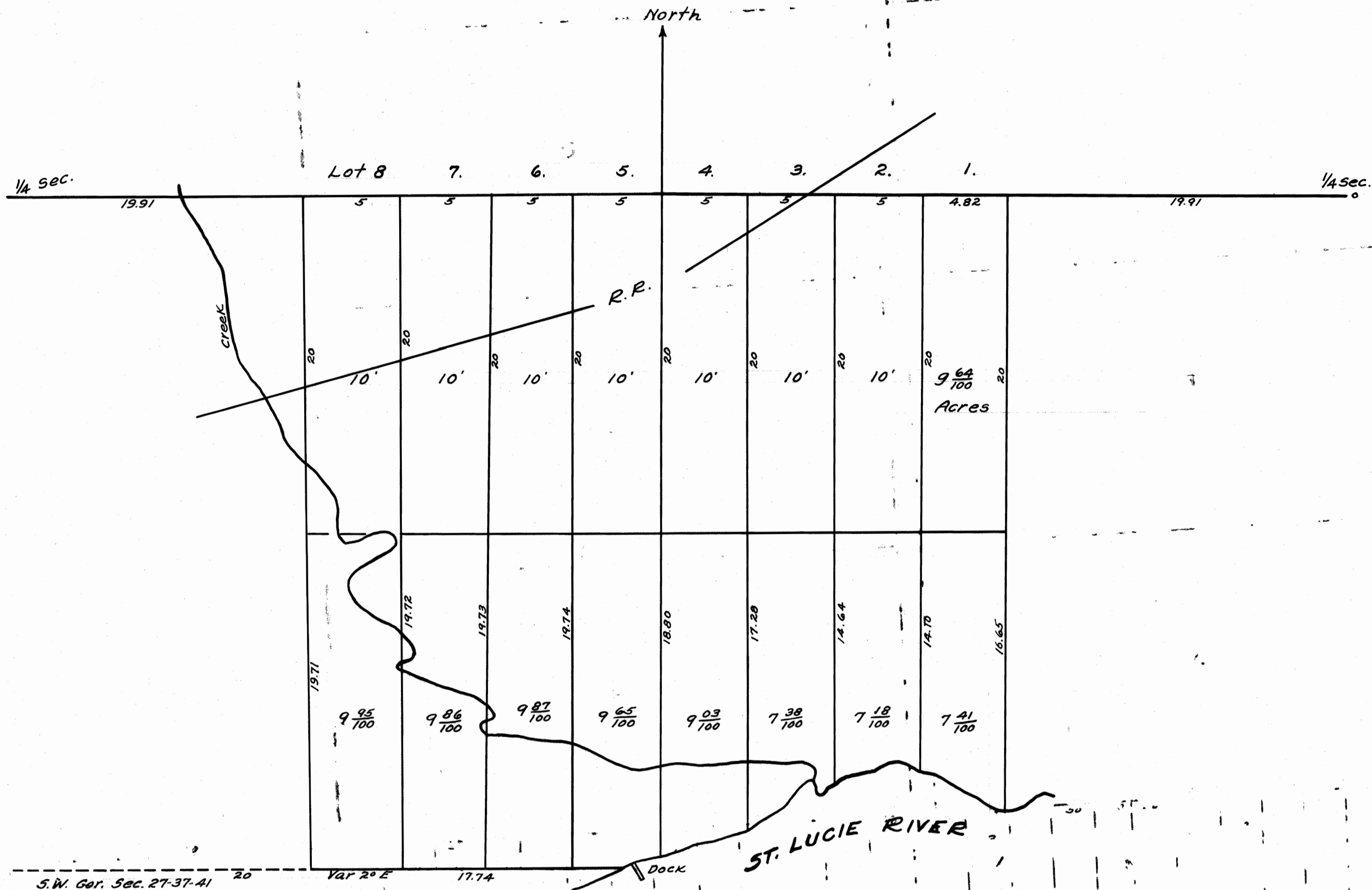
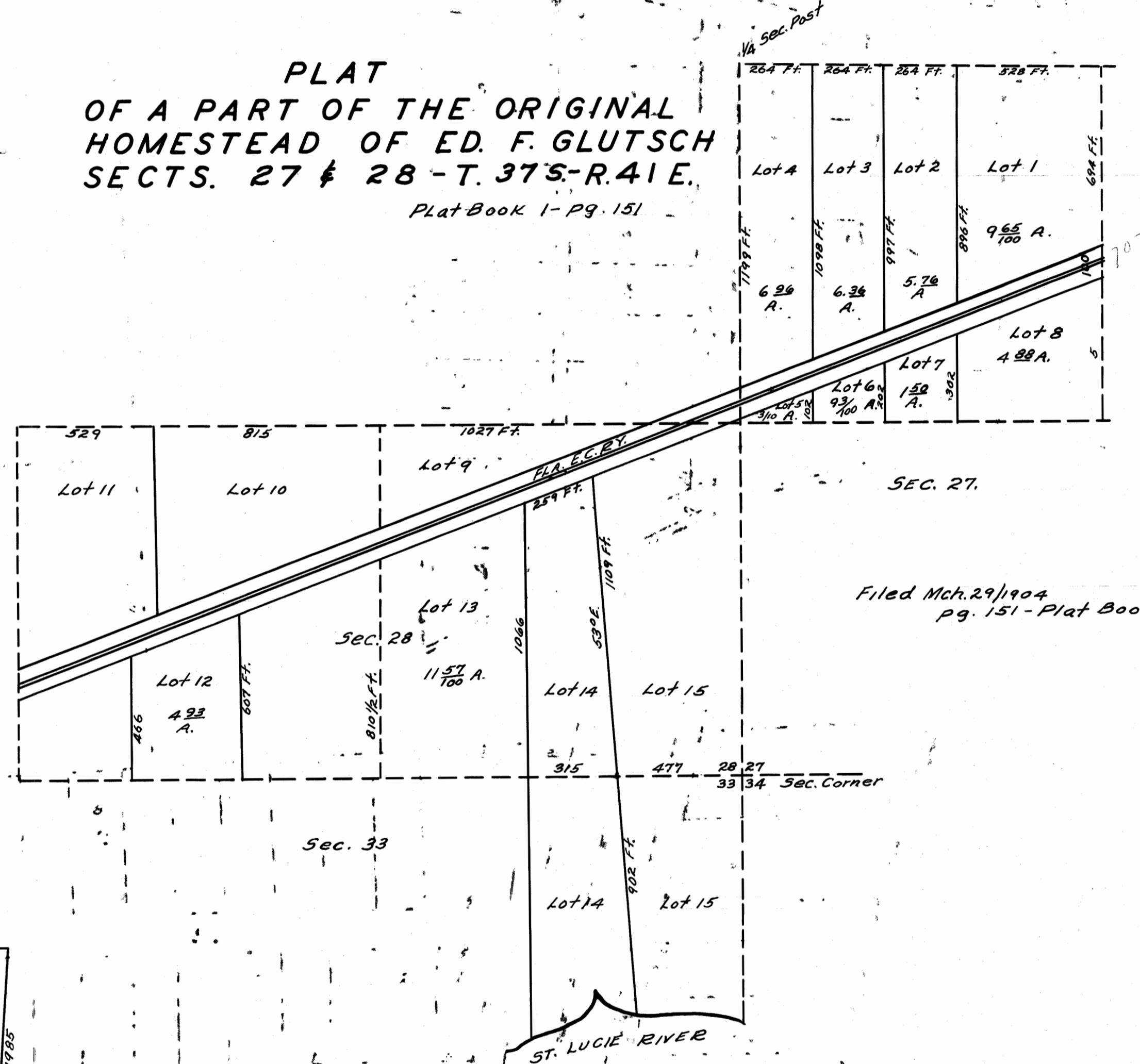


*Fred A. Stafford*  
 REGISTERED LAND SURVEYOR  
 FLORIDA CERTIFICATE No. 443



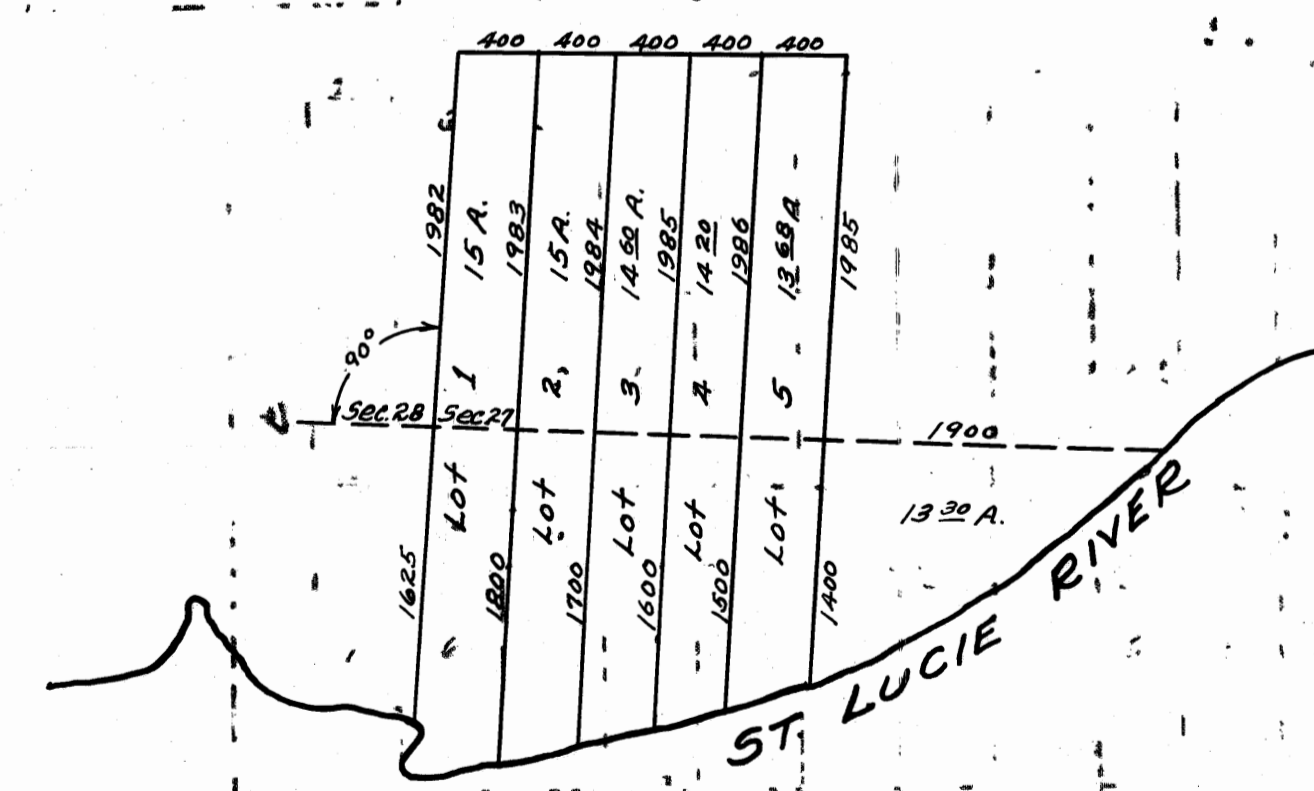
PLAT  
 OF A PART OF THE ORIGINAL  
 HOMESTEAD OF ED. F. GLUTSCH  
 SECTS. 27 & 28 - T. 37S - R. 41E.  
 Plat Book 1 - pg. 151



Filed Mch. 29/1904  
 pg. 151 - Plat Book.

MAP OF LANDS  
 OWNED BY J.T. CLEVELAND  
 EMBRACING LOTS 2-3 SEC. 27  
 T. 37 - R. 41E.

AS subdivided Mch. 21, 1894.  
 Filed Apl. 20, 1894. Transcribed from D.B. "X" - pg. 152.  
 R.R. Stewart - clerk. by J.O. Fries  
 by W.I. Allen, Surveyor  
 Scale 5chs. per inch.



PLAT OF THE SUBDIVISION  
 S.W. 1/4 OF S.W. 1/4 SEC. 27 & W.  
 PART OF LOT 2 SEC. 34 - T. 37S -  
 R. 41E.

Filed July 14, 1893.  
 Transcribed from D.B. (V) pg. 696.