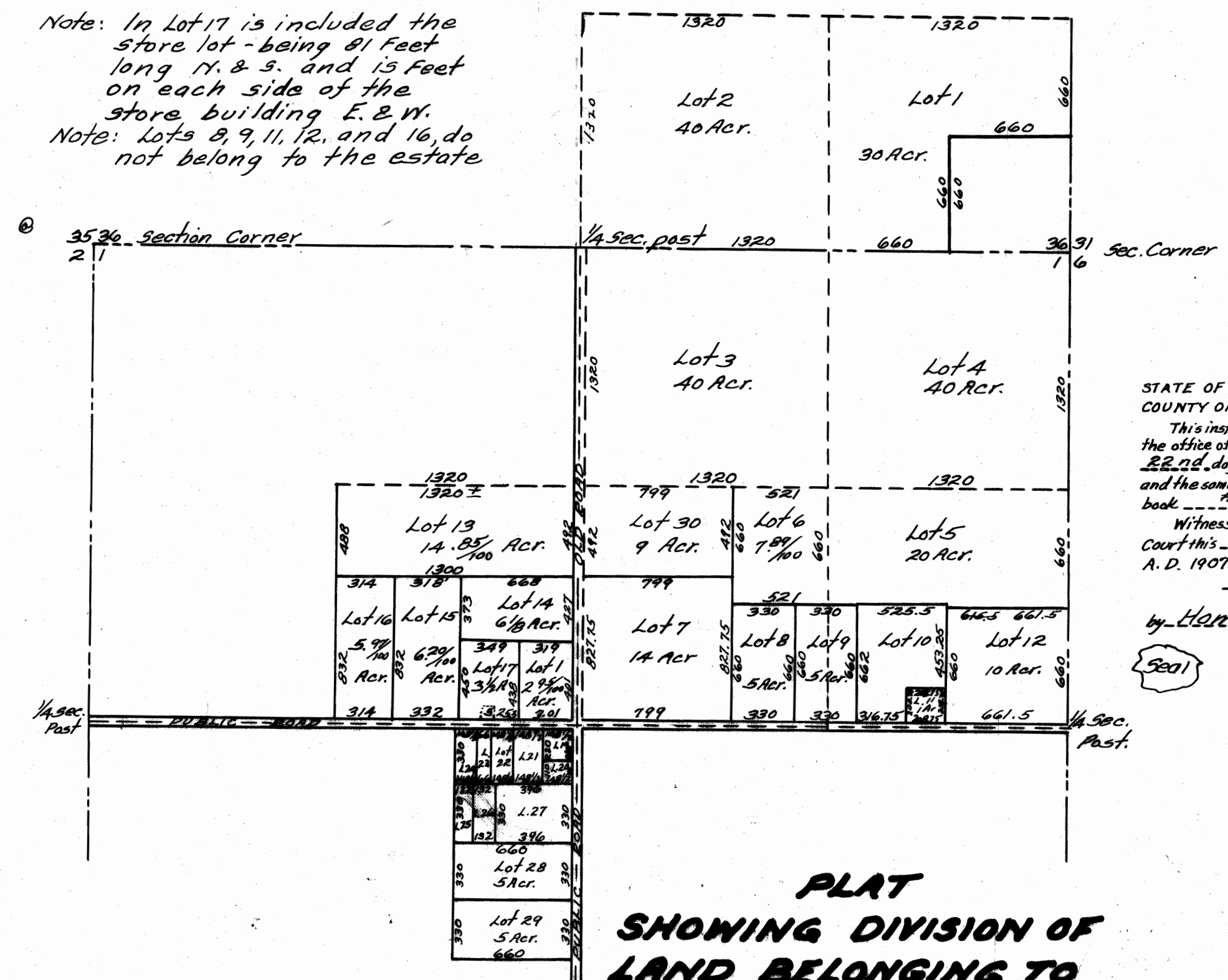


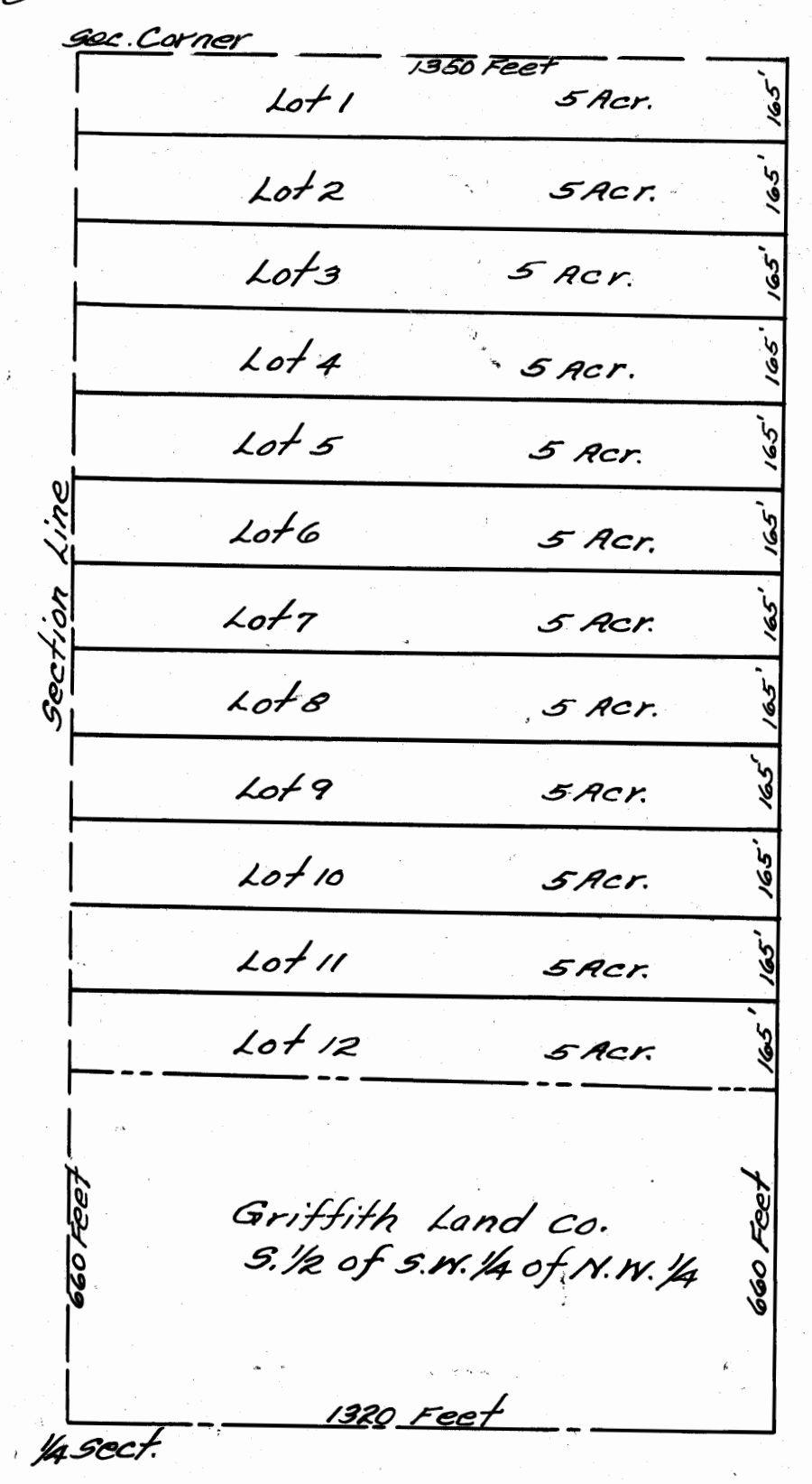
STATE OF FLORIDA } 55  
 COUNTY OF ST. LUCIE }  
 This instrument of writing was filed for record in the office of the Clerk of the Circuit Court on this 14<sup>th</sup> day of November, A.D. 1907 and the same has been duly recorded in Plat Book #1, at page 13.  
 Witness my hand and the seal of the Circuit Court this 14<sup>th</sup> day of November, A.D. 1907.  
 J. E. FUZZ  
 CLERK CIRCUIT COURT  
 BY: Homer Conkling  
 DEPUTY CLERK

This is a true copy of the original Plat of Record of "MARY J. DESTEBEN'S 3<sup>rd</sup> Plat Book 1, Page 13, ST. LUCIE COUNTY, Florida, Non Mactha County."  
 Fred A. Stafford  
 REGISTERED LAND SURVEYOR  
 Florida Certificate No. 443



Note: In Lot 17 is included the store lot - being 21 feet long N. & S. and 13 feet on each side of the store building E. & W.  
 Note: Lots 8, 9, 11, 12, and 16, do not belong to the estate

STATE OF FLORIDA } 55  
 COUNTY OF ST. LUCIE }  
 This instrument of writing was filed for record in the office of the Clerk of the Circuit Court on this 22<sup>nd</sup> day of October, A.D. 1907, and the same has been duly recorded in Plat Book #1, at page 13.  
 Witness my hand and the seal of the Circuit Court this 22<sup>nd</sup> day of October, A.D. 1907.  
 J. E. FUZZ  
 CLERK CIRCUIT COURT  
 BY: Homer Conkling  
 DEPUTY CLERK



**PLAT SHOWING DIVISION OF LAND BELONGING TO THE ESTATE OF H.T. GIFFORD VERO-ST. LUCIE CO., FLA.**

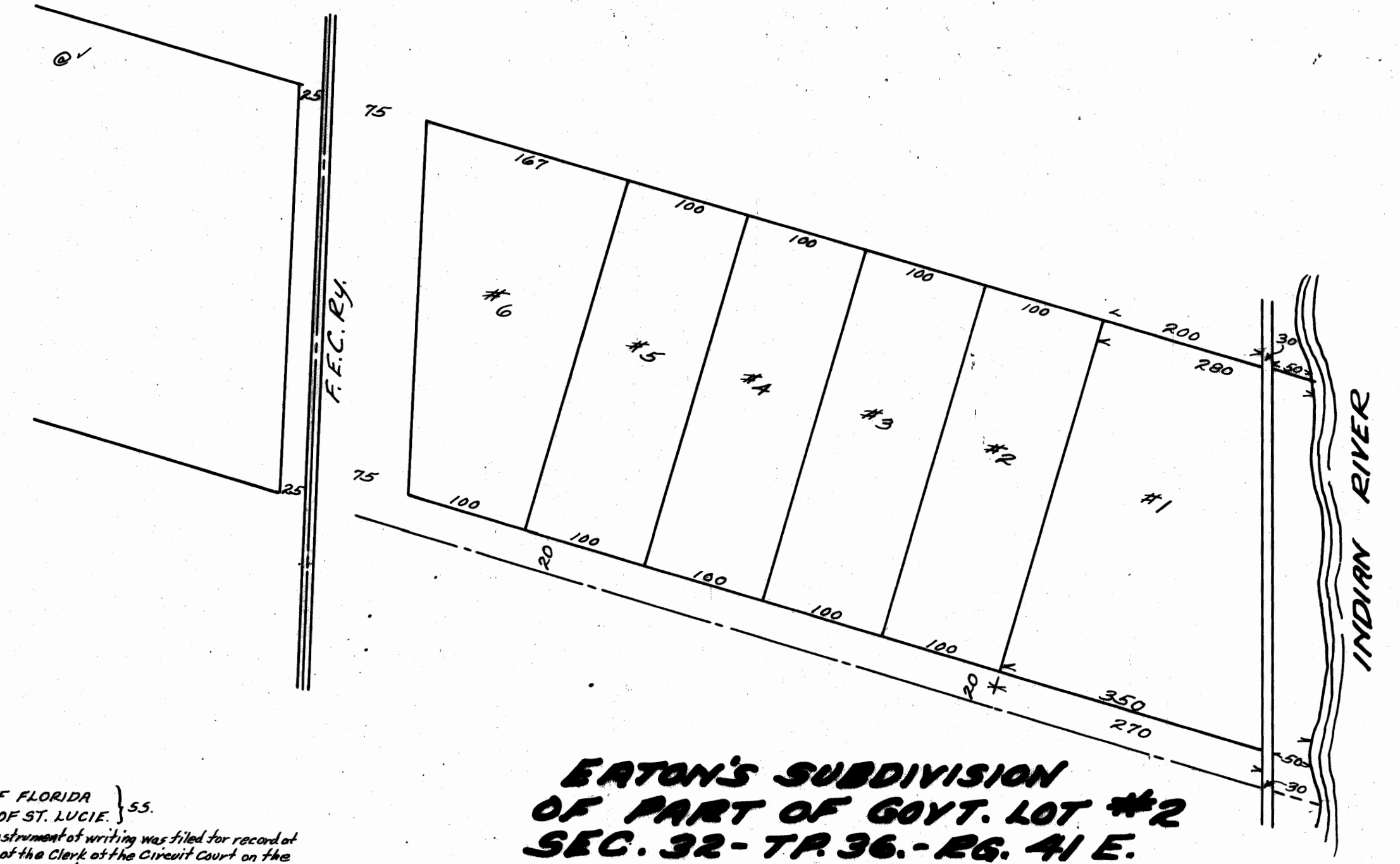
Comprising:-  
 South half of S.E. 1/4 Sec. 36 Tp. 32 S. R. 4 E. 39 E. except S.E. 1/4 of S.E. 1/4 of S.E. 1/4  
 N.E. 1/4 of Sect. 1, Tp. 33 S. R. 4 E. 39 E.  
 S.E. 1/4 of N.W. 1/4 of Sect. 1, Tp. 33 S. R. 4 E. 39 E.  
 E. 1/2 of N.E. 1/4 of S.W. 1/4 Sect. 1, Tp. 33 S. R. 4 E. 39 E.

Mapped by J.O. Fries, C.E.  
 Verified by W.O. Penny and F. Chas. Gifford.

Scale: 660 feet = 1 inch All measurements in feet.

**MARY J. DESTEBEN'S SUBDIVISION OF WEST HALF OF NORTH WEST QUARTER OF SEC. 27 TR 37 S. - RGE. 41 E. ST. LUCIE COUNTY, FLA.**

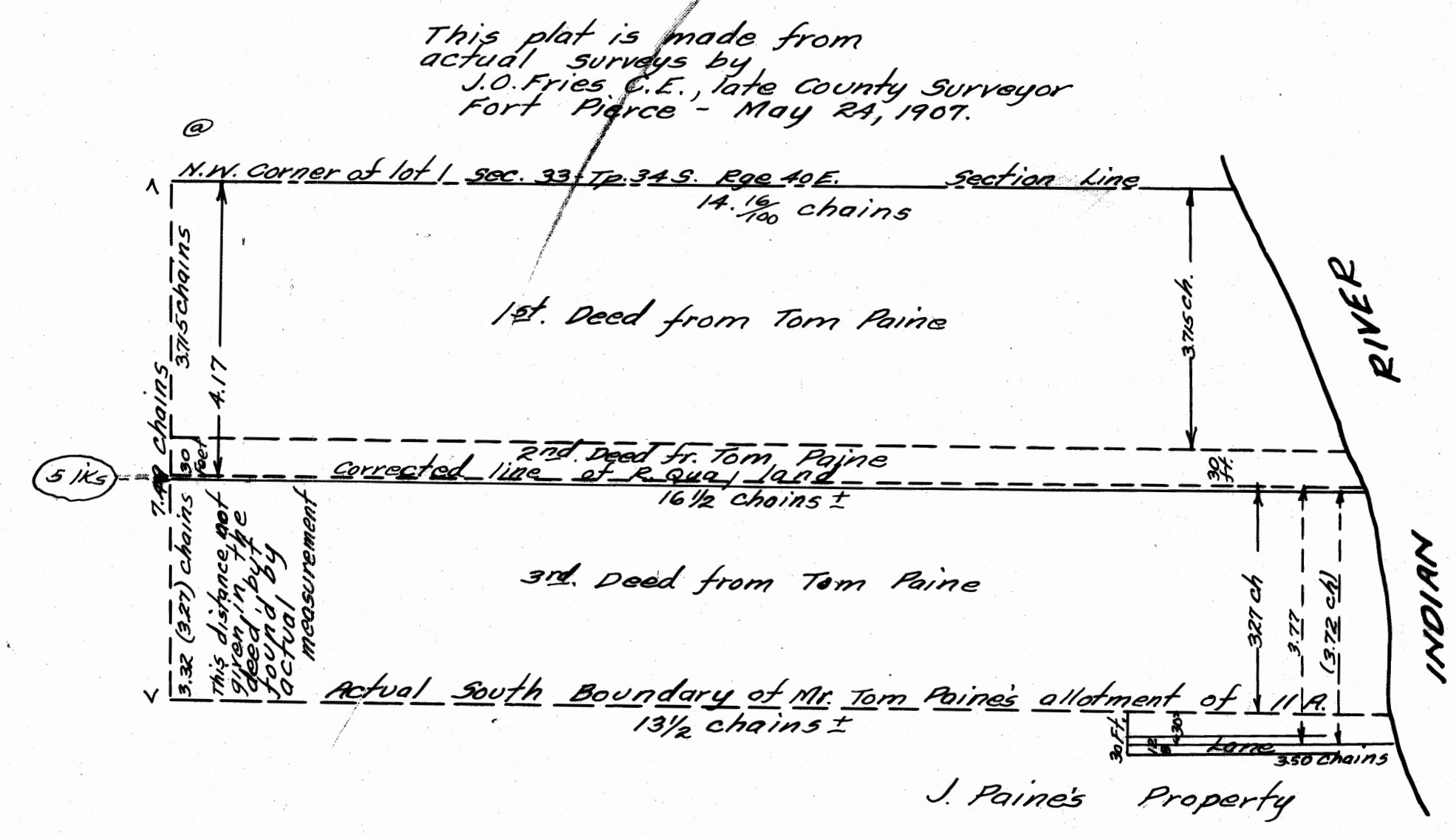
Scale: 5 chains = 1 inch.



**EATON'S SUBDIVISION OF PART OF GOVT. LOT #2 SEC. 32 - TR 36 - R. 41 E.**

STATE OF FLORIDA } 55  
 COUNTY OF ST. LUCIE }  
 This instrument of writing was filed for record in the office of the Clerk of the Circuit Court on the 22<sup>nd</sup> day of January, A.D. 1908 and the same has been duly recorded in Plat Book #1, at page 13.  
 Witness my hand and the seal of the Circuit Court this 22<sup>nd</sup> day of January, A.D. 1908.  
 J. E. FUZZ  
 CLERK CIRCUIT COURT  
 BY: Homer Conkling  
 DEPUTY CLERK

Surveyed and subdivided by J.M. Swain, Co. Surveyor, Jan. 23<sup>rd</sup> 1908.



STATE OF FLORIDA } 55  
 COUNTY OF ST. LUCIE }  
 This instrument of writing was filed for record in the office of the Clerk of the Circuit Court on this 30<sup>th</sup> day of June, A.D. 1907 and the same has been duly recorded in Plat Book #1, at page 13.  
 Witness my hand and the seal of the Circuit Court this 30<sup>th</sup> day of June, A.D. 1907.  
 J. E. FUZZ  
 CLERK CIRCUIT COURT  
 BY: Homer Conkling  
 DEPUTY CLERK