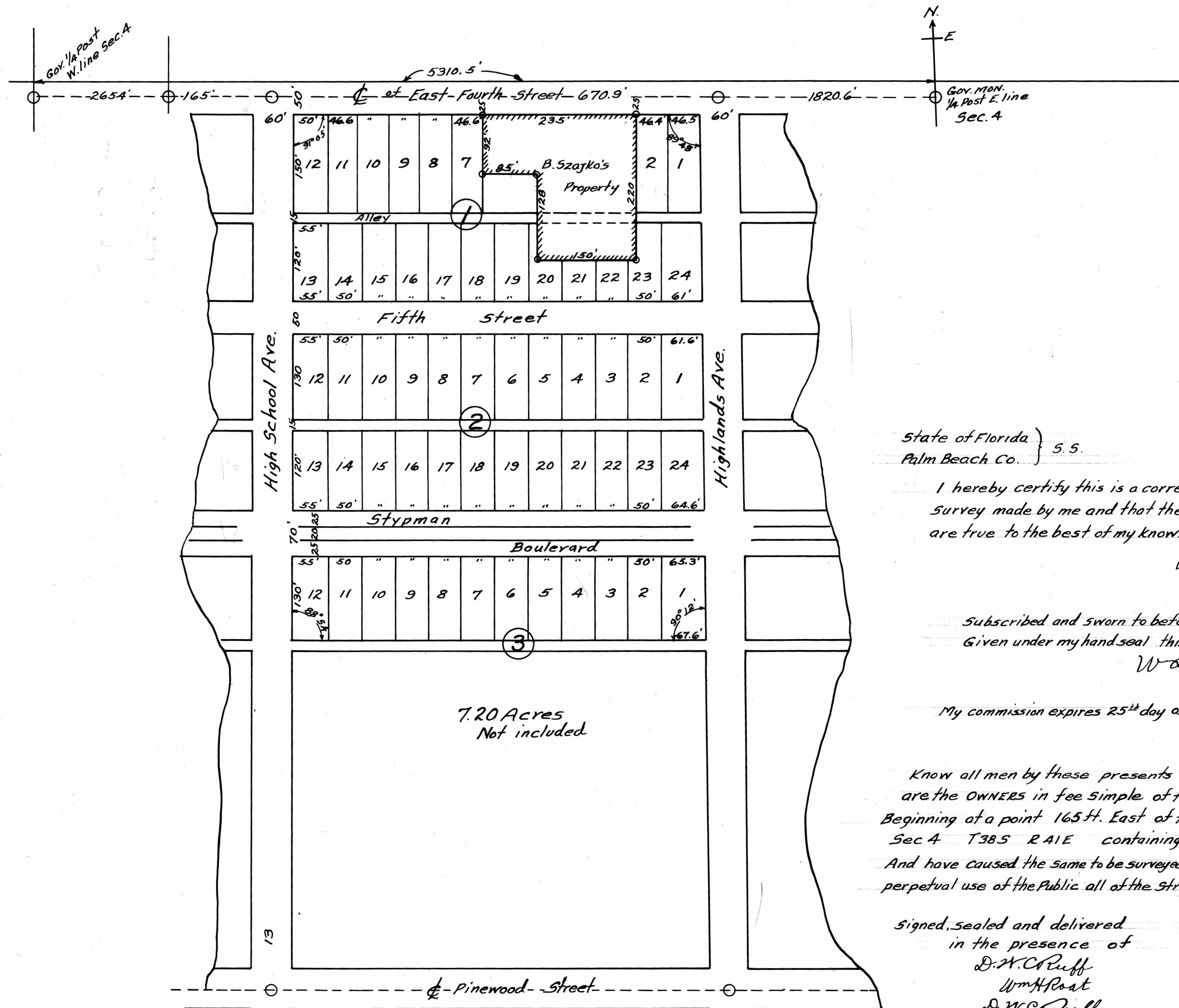


HIGHLANDS

SUBDIVISION

STUART, PALM BEACH CO., FLORIDA.

FLORIDA GROWERS INC., T385, R41E, SEC. 4.
OWNERS



THIS IS A TRUE COPY OF THE ORIGINAL PLAT OF RECORD OF "HIGHLANDS" PLAT BOOK 9, PAGE 70, PALM BEACH COUNTY, FLORIDA, NEW MARTIN COUNTY.

Fred A. Stafford
REGISTERED LAND SURVEYOR
FLORIDA CERTIFICATE NO. 443

P. B. Co. 9-70.
STATE OF FLORIDA
COUNTY OF PALM BEACH } 55
THIS INSTRUMENT WAS FILED FOR RECORD AT 4:30 P.M. THIS 26 DAY OF JANUARY 1924, AND DULY RECORDED ON THE 26 DAY OF JANUARY IN BOOK 9 OF PLATS ON PAGE 70 RECORD VERIFIED.
J. J. Adams
CLERK CIRCUIT COURT
BY: _____
DEPUTY CLERK

State of Florida } 5.5.
Palm Beach Co. }

I hereby certify this is a correct Plat of an actual survey made by me and that the measurements, etc are true to the best of my knowledge and belief

Wm H. Roat
Surveyor

Subscribed and sworn to before me, at Stuart, Fla.
Given under my hand and seal this 21st day of January A.D. 1924.

W. A. Ball Notary Public.

My commission expires 25th day of Dec. A.D. 1925

Know all men by these presents that the FLORIDA GROWERS, INC. are the OWNERS in fee simple of the tract of land hereon shown Beginning at a point 165 ft. East of the N.W. corner of the N.W. 1/4 of the S.E. 1/4 Sec 4 T385 R41E containing 20 acres more or less And have caused the same to be surveyed and platted and hereby DEDICATE to the perpetual use of the Public all of the Streets and Alleys shown hereon

Signed, sealed and delivered in the presence of
D. H. C. Ruff
Wm H. Roat
D. M. Co. Ruff
Wm H. Roat

By *Carroll Dunscombe* Pres.
Attest *Janifer* Secy-Treas.

Before me, this day personally appeared *Carroll Dunscombe* and *J. R. Rigler* to me Well Known to be the officials of the aforesaid Florida Growers Inc. Owners of said Tract of land hereon Platted, who each acknowledged before me that they executed the dedication hereon shown for the uses and purposes herein stated, Given under my hand and seal, this 21st day of January A.D. 1924

W. A. Ball

My Commission expires 25th day of Dec. 1924 Notary Public