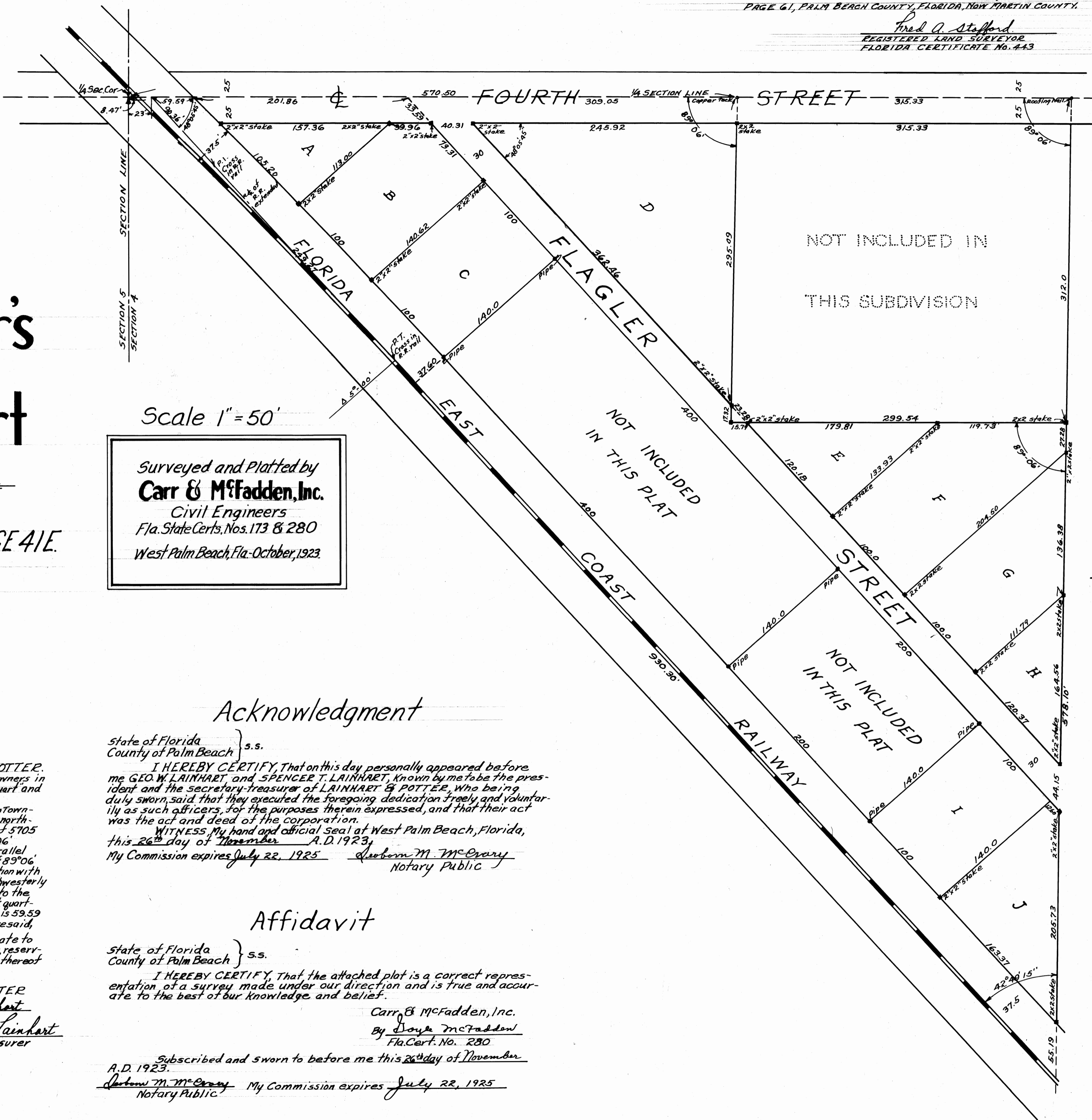


THIS IS A TRUE COPY OF THE ORIGINAL PLAT OF RECORD OF LAINHART & POTTERS' BOOK 9, PAGE 61, PALM BEACH COUNTY, FLORIDA, NOW MARTIN COUNTY.

Fred A. Stafford  
REGISTERED LAND SURVEYOR  
FLORIDA CERTIFICATE No. 443

STATE OF FLORIDA  
COUNTY OF PALM BEACH }  
THIS INSTRUMENT WAS  
FILED FOR RECORD AT 5:00 PM  
THIS 4<sup>th</sup> DAY OF DECEMBER  
1923 AND DULY RECORDED ON  
THE 4<sup>th</sup> DAY OF DECEMBER  
1923 IN BOOK 9 OF PLATS  
ON PAGE 61 RECORD  
VERIFIED.  
J. B. ...  
CLERK CIRCUIT COURT  
BY  
DEPUTY CLERK



# Lainhart & Potter's Addition to Stuart

IN SECTION 4, TOWNSHIP 38 S., RANGE 41 E.  
STUART, FLORIDA

Scale 1" = 50'  
Surveyed and Platted by  
**Carr & McFadden, Inc.**  
Civil Engineers  
Fla. State Certs. Nos. 173 & 280  
West Palm Beach, Fla. - October, 1923

### Dedication

state of Florida } s.s.  
County of Palm Beach }  
KNOW ALL MEN BY THESE PRESENTS, That LAINHART & POTTER, a corporation organized and existing under the laws of the State of Florida, the owners in fee simple of the tract of land shown hereon as 'Lainhart & Potter's Addition to Stuart' and more particularly described as follows:  
Commencing at the quarter section corner between sections 4 and 5 in Township 38 South, Range 41 East, thence East along the quarter section line between the north-west quarter and the southwest quarter of Section 4 aforesaid, a distance of 570.50 feet, thence making an angle with the aforesaid quarter section line of 89°06' West to South, a distance of 312 feet in a southerly direction; thence East parallel to the aforesaid quarter section line 315.33 feet, thence making an angle of 89°06' West to South, a distance of 578.1 feet in a southerly direction to the intersection with the East line of the right-of-way of the Florida East Coast Railroad; thence northwesterly along the aforesaid East line of the Florida East Coast Railroad right-of-way to the intersection of the said East line with the quarter section line between the northwest quarter and the southwest quarter of Section 4 aforesaid, which point of intersection is 59.59 feet East of the point of beginning, measured along the quarter section line aforesaid, has caused the same to be platted as shown hereon, and does hereby dedicate to the perpetual use of the public as public highways, the streets as shown hereon, reserving however unto itself, its successors, or assigns, the reversion or reversions thereof whenever the same is abandoned by the public or discontinued by law.

Witness:  
Boyle McFadden  
Arthur M. McCreary

LAINHART & POTTER  
By Geo. W. Lainhart  
President  
Attest Spencer J. Lainhart  
Secretary Treasurer

### Acknowledgment

state of Florida } s.s.  
County of Palm Beach }  
I HEREBY CERTIFY, that on this day personally appeared before me GEO. W. LAINHART, and SPENCER T. LAINHART, known by me to be the president and the secretary-treasurer of LAINHART & POTTER, who being duly sworn, said that they executed the foregoing dedication freely and voluntarily as such officers, for the purposes therein expressed, and that their act was the act and deed of the corporation.  
WITNESS my hand and official seal at West Palm Beach, Florida, this 26<sup>th</sup> day of November, A.D. 1923.  
My Commission expires July 22, 1925  
Arthur M. McCreary  
Notary Public

### Affidavit

state of Florida } s.s.  
County of Palm Beach }  
I HEREBY CERTIFY, that the attached plat is a correct representation of a survey made under our direction and is true and accurate to the best of our knowledge and belief.  
Carr & McFadden, Inc.  
By Boyle McFadden  
Fla. Cert. No. 280  
Subscribed and sworn to before me this 26<sup>th</sup> day of November, A.D. 1923.  
Arthur M. McCreary My Commission expires July 22, 1925  
Notary Public