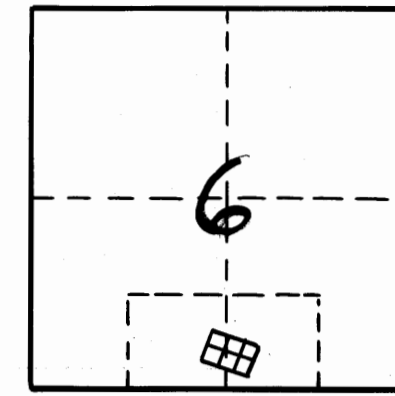


-Tie-
 From N.W. Corner Lot 8, Block 8
 N 74°-30'W, 2026' to Range Line between
 Ranges 38 and 39, thence North
 3436' to corner post common to
 Ranges 38, 39, Townships, 38-40.

INDIANTOWN

FLORIDA
 A part of the S.E. 1/4 of S.W. 1/4, and
 S.W. 1/4 of S.E. 1/4, of Sec. 6 T.40, S.R.39 E.



State of Florida, County of Palm Beach
 Know all men by these presents, that the
 Southern States Land and Timber Company, owner in fee
 simple of the tract of land shown hereon has caused the
 accompanying plat to be made and the land sub-divided as
 indicated on this plat, and hereby dedicates to the perpetual use of the public
 the streets and roads shown hereon.
 Southern States Land and Timber Co.
 Geo. F. Benschel Secretary

P.B.Co.
 8-68
 STATE OF FLORIDA } 55
 COUNTY OF PALM BEACH }
 THIS INSTRUMENT WAS FILED
 FOR RECORD AT 5:21 P.M. THIS
 22ND DAY OF MARCH 1922 AND
 DULY RECORDED ON THE 22ND
 DAY OF MARCH, 1922 IN
 BOOK 8 OF PLATS ON PAGE
 68, RECORD VERIFIED.
 J.W. Gooding
 CLERK CIRCUIT COURT
 BY: _____
 DEPUTY CLERK

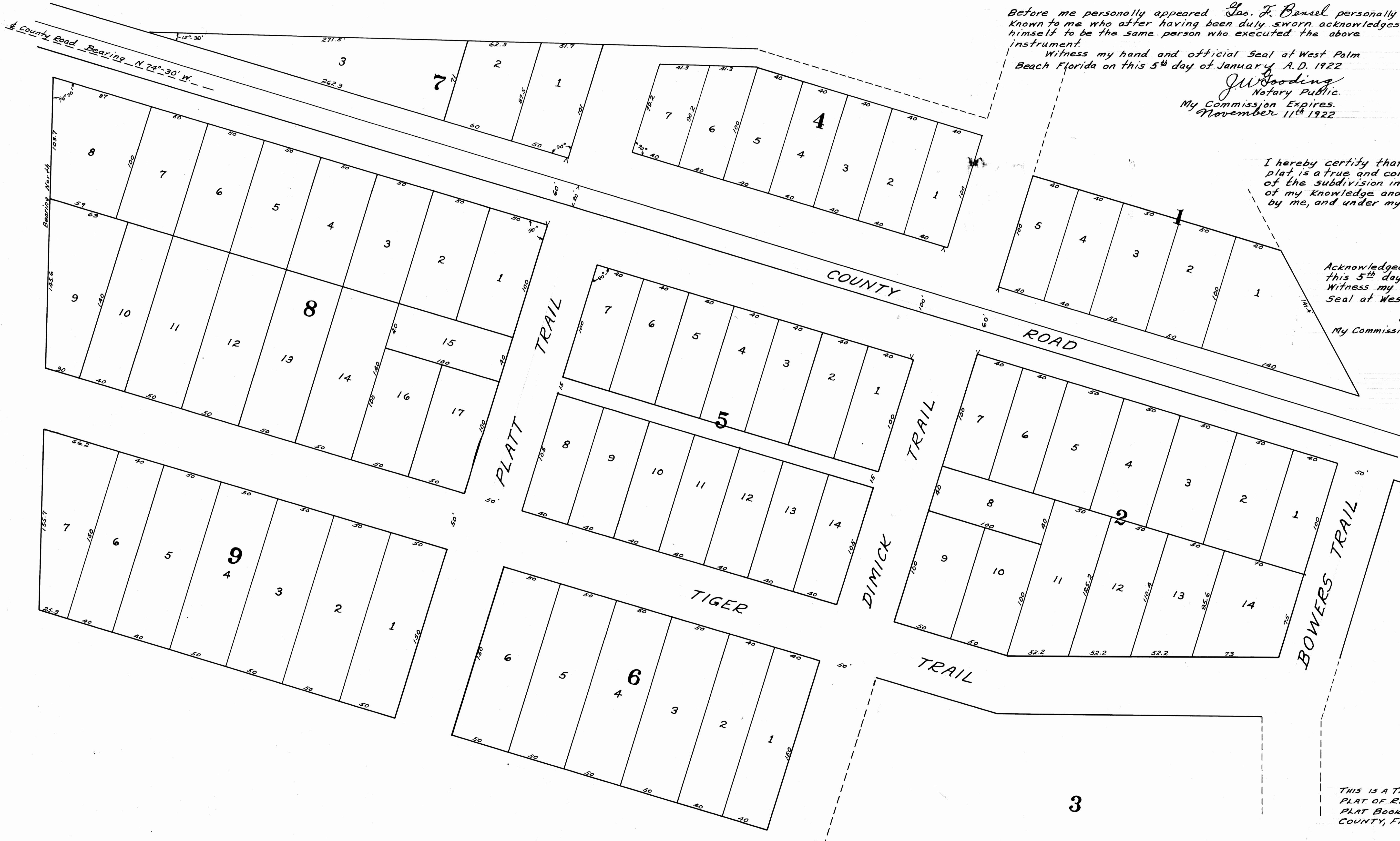
Before me personally appeared Geo. F. Benschel personally
 known to me who after having been duly sworn acknowledges
 himself to be the same person who executed the above
 instrument.

Witness my hand and official Seal at West Palm
 Beach Florida on this 5th day of January A.D. 1922

J.W. Gooding
 Notary Public.
 My Commission Expires
 November 11th 1922

I hereby certify that the accompanying
 plat is a true and correct representation
 of the subdivision indicated to the best
 of my knowledge and belief, as surveyed
 by me, and under my direction.
 F. T. Koysser
 Registered Engineer

Acknowledged before me on
 this 5th day of January A.D. 1922
 Witness my hand and official
 Seal at West Palm Beach, Florida.
 J.W. Gooding
 Notary Public
 My Commission Expires Nov. 11th, 1922



THIS IS A TRUE COPY OF THE ORIGINAL
 PLAT OF RECORD OF "INDIANTOWN"
 PLAT BOOK 8, PAGE 68, PALM BEACH
 COUNTY, FLORIDA, NOW MARTIN COUNTY.

Fred A. Stafford
 REGISTERED LAND SURVEYOR
 FLORIDA CERTIFICATE NO. 443

Scale 1"=40'
 1/5/22 T.G.T.