

STATE OF FLORIDA } S.S.  
COUNTY OF PALM BEACH }

I, H.G. Bailey Surveyor do hereby certify that information here appearing is accurate, and correct to the best of my knowledge and belief, as I made this survey myself  
STUART, FLORIDA JAN. 10<sup>th</sup> 1915

H.G. Bailey  
Surveyor

Sworn and subscribed before me this day 20<sup>th</sup> JAN. 1915

W.A. Ball Notary Public  
My Commission Expires Oct 4, 1917.

I, Frank L. Young Agt. For S.H. Garrett Owner dedicate to the perpetual use of the Public the roads shown on this map

Frank L. Young, Agt.

Sworn and subscribed before me this 10<sup>th</sup> day of JAN. 1915

J. M. Donald Notary Public  
My Commission Expires Jan. 20<sup>th</sup> 1917

# S. H. GARRETT'S ALLOTMENT

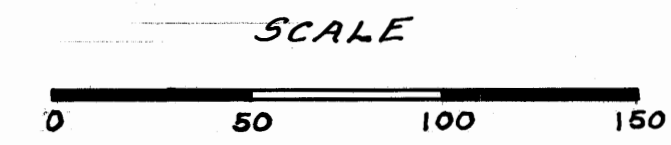
OF THE  
WEST 70 ACRES  
OF

LOT No. 4 SEC. 35, TOWN. 38 S, R. 41 E.

PALM BEACH CO. FLA.

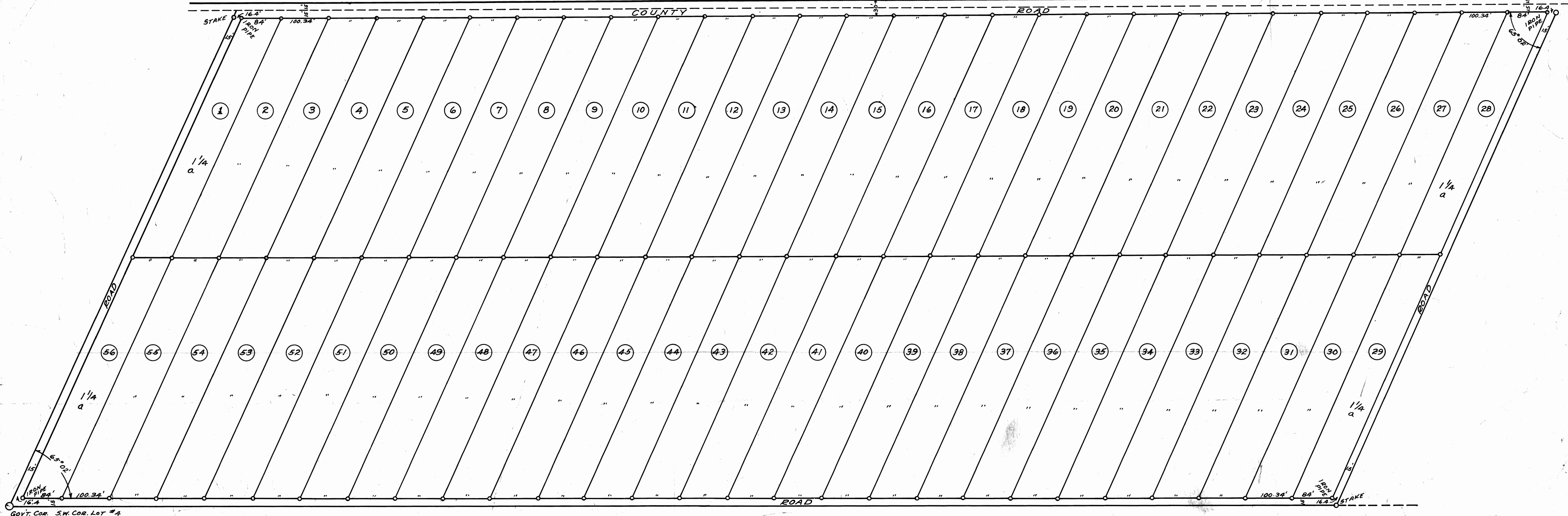
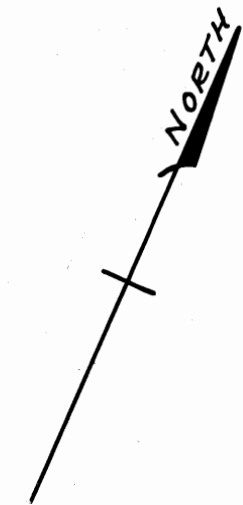
STATE OF FLORIDA }  
COUNTY OF PALM BEACH }  
THIS INSTRUMENT WAS FILED FOR RECORD THIS 20<sup>th</sup> DAY OF JANUARY 1915 AND DULY RECORDED ON THE DAY OF 19 IN BOOK 5 OF PLATS ON PAGE 85 RECORD VERIFIED.  
J. O. Butler  
CLERK CIRCUIT COURT  
BY M. M. Mellen  
DEPUTY CLERK

THIS IS A TRUE COPY OF THE ORIGINAL PLAT OF RECORD OF "S.H. GARRETT'S ALLOTMENT" PLAT BOOK 5, PAGE 85, PALM BEACH COUNTY, FLORIDA, NOW MARTIN COUNTY.  
Fred A. Stafford  
REGISTERED LAND SURVEYOR  
FLORIDA CERTIFICATE # 443



1915

BAILEY & RIGHTMIRE  
CIVIL ENGINEERS & SURVEYORS  
STUART, FLORIDA



Govt. Cor. S.W. Cor. Lot #4  
SEC. 35 T. 38 S. R. 41 E