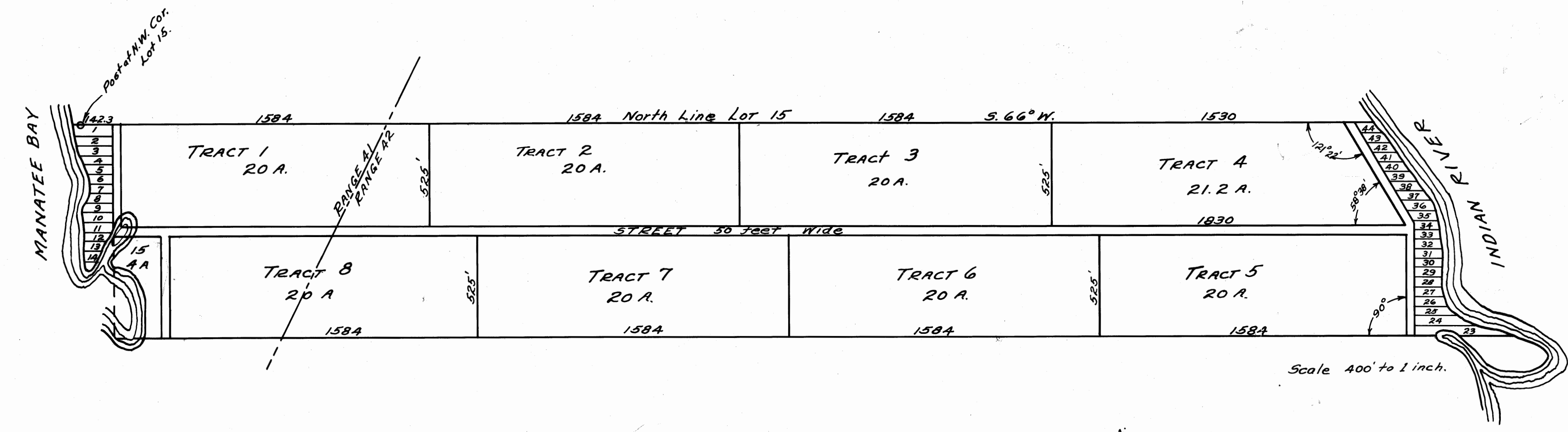


THIS IS A TRUE COPY OF THE ORIGINAL PLAT OF RECORD OF "J.O. JACKSON'S ALLOTMENT" PLAT BOOK 5, PAGE 70, PALM BEACH COUNTY, FLORIDA, NOW MARTIN COUNTY.

Wm. A. Stafford
REGISTERED LAND SURVEYOR
FLORIDA CERTIFICATE NO. 443

STATE OF FLORIDA } ss.
COUNTY OF PALM BEACH }
THIS INSTRUMENT WAS FILED FOR RECORD THIS 6th DAY OF October 1914 AND DULY RECORDED ON THE DAY OF 19 IN BOOK 5 OF PLATS ON PAGE 70, RECORD VERIFIED
Geo. S. Butler
CLERK CIRCUIT COURT
BY: J. Miller
DEPUTY CLERK



STATE OF FLORIDA } ss.
COUNTY OF PALM BEACH }

I, C.H. RIGHTMIRE, do hereby Certify that the measurements here appearing are from the stakes as actually set, and are accurate and correct to the best of my knowledge and belief

STUART, Fla. October 1st A.D. 1914.
C.H. Rightmire
Surveyor

Subscribed and sworn to before me this 1st day of October A.D. 1914

Arthur T. Bergant
Notary Public
My Commission Expires March 27-1916

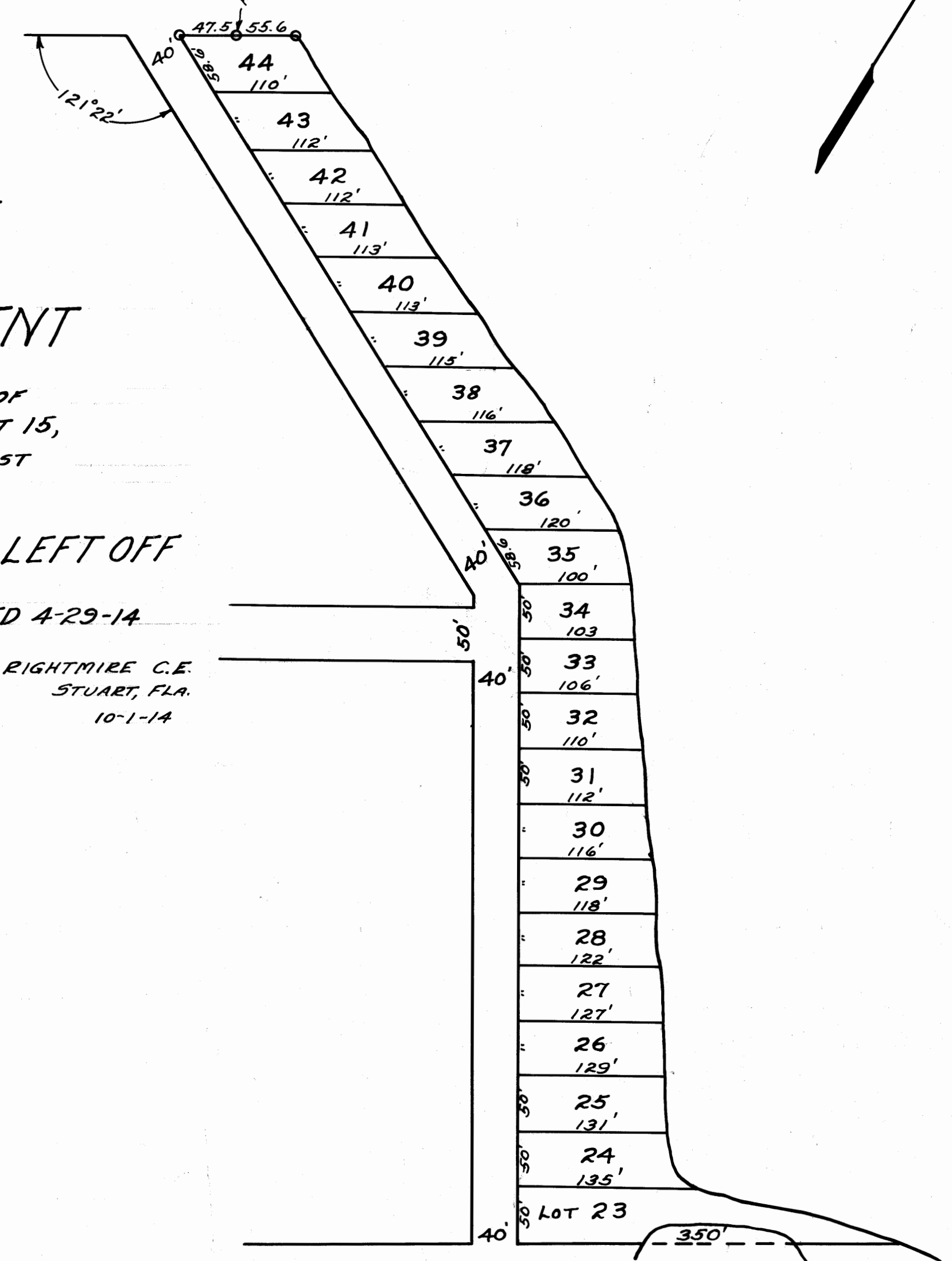
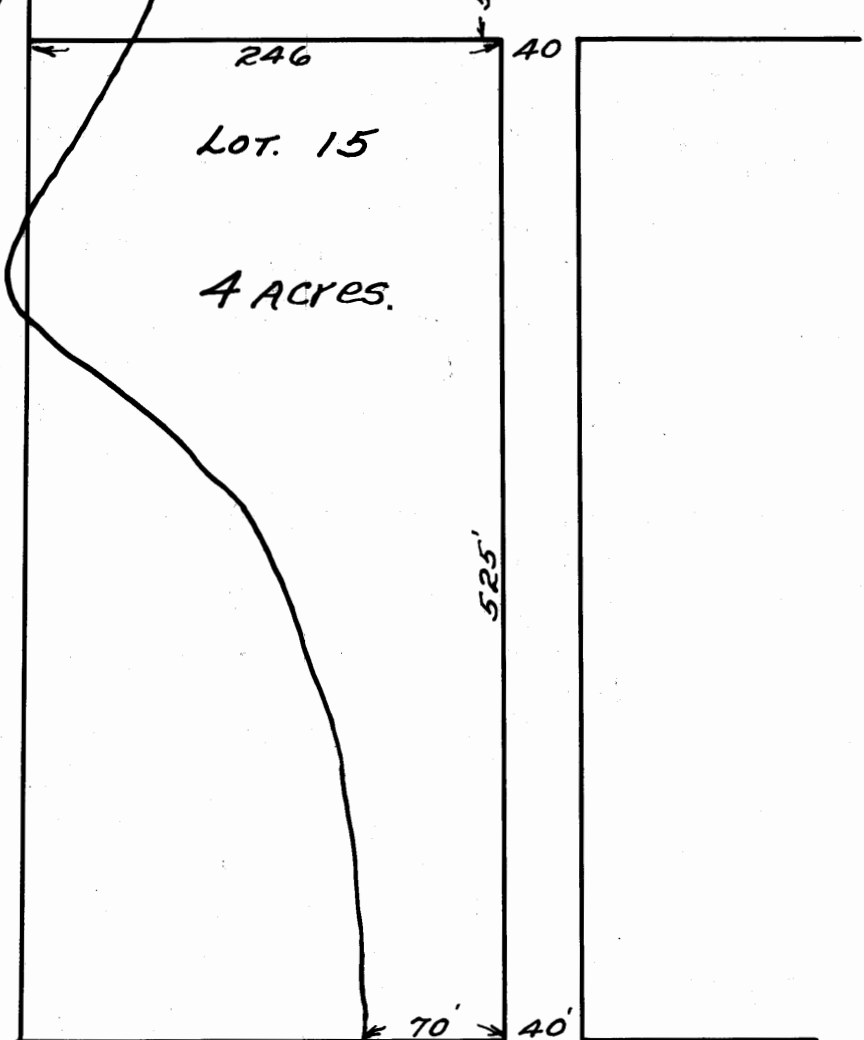
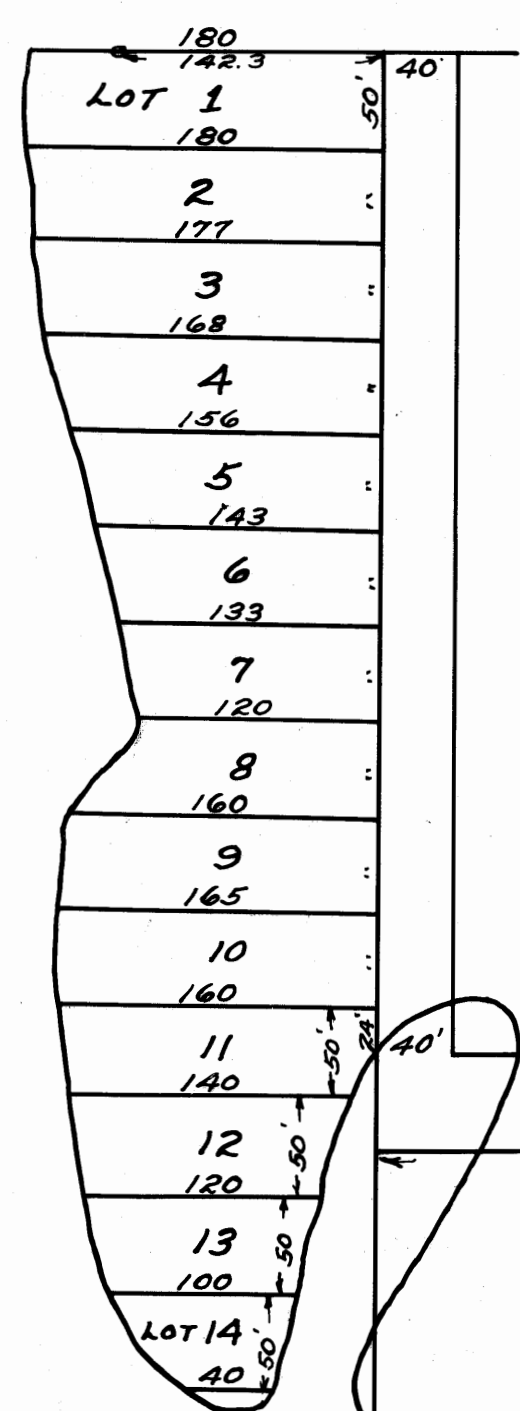
SUPPLEMENTARY PLAT OF J.O. JACKSON'S ALLOTMENT

BEING THE NORTH TWO THIRDS OF THE COMMISSIONERS SUBDIVISION OF LOT 15, HANSON GRANT IN T. 38S, R. 41+42 EAST PALM BEACH COUNTY, FLORIDA.

SHOWING MEASUREMENTS LEFT OFF

J.C. WAGEN'S PLAT, DATED 4-29-14

BAILEY & RIGHTMIRE C.E.
STUART, FLA.
10-1-14



LOTS 1 to 15 INCLUSIVE Scale 100' to 1 INCH

LOTS 23 to 44 INCLUSIVE Scale 100' to 1 inch.