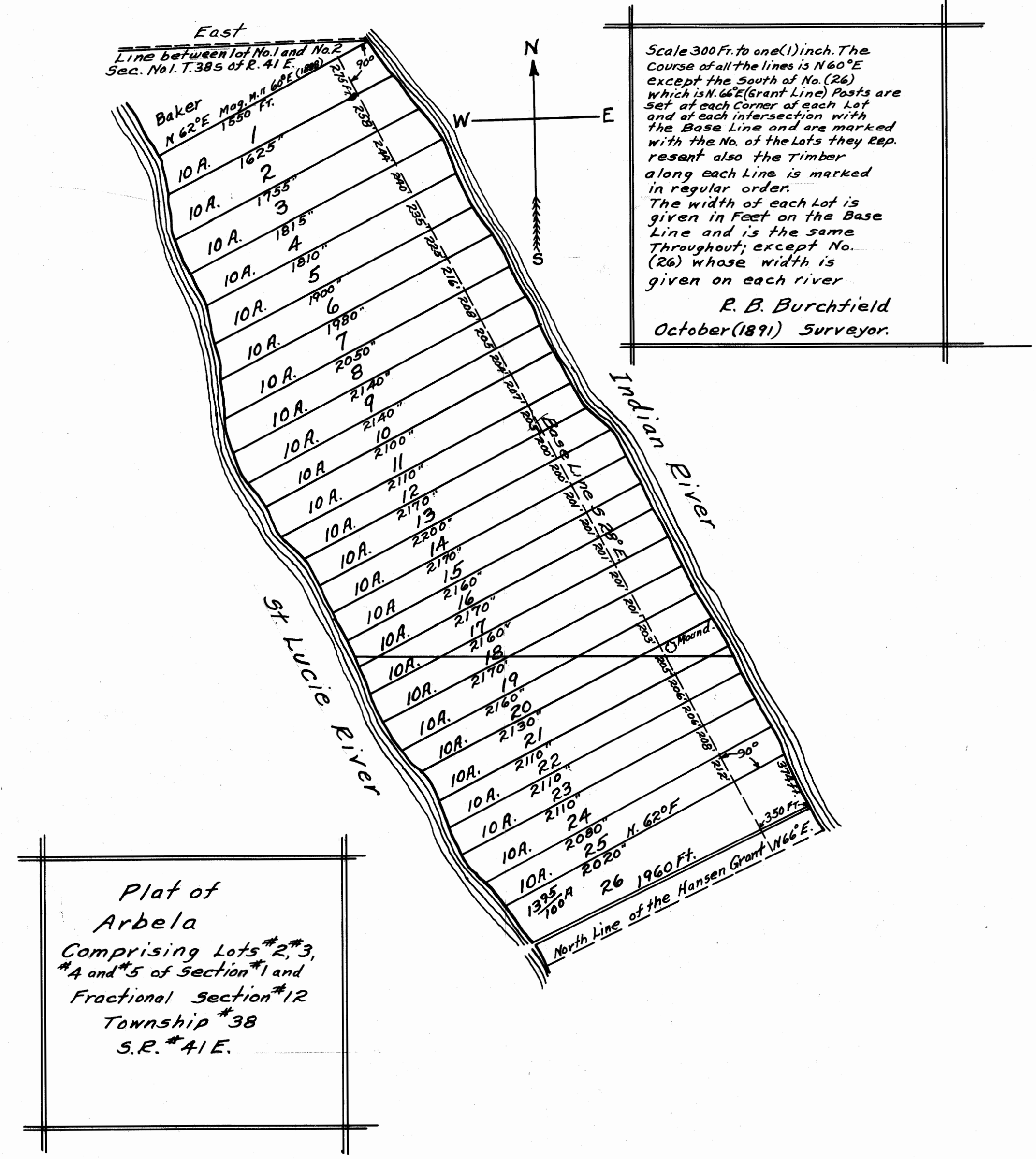


THIS IS A TRUE COPY OF THE ORIGINAL PLAT OF RECORD OF "ARBELA" PLAT BOOK 3, PAGE 29, PALM BEACH COUNTY, FLORIDA, NOW MARTIN COUNTY.

Fred A. Stafford
REGISTERED LAND SURVEYOR
FLORIDA CERTIFICATE No. 443

STATE OF FLORIDA
COUNTY OF PALM BEACH }
THIS INSTRUMENT WAS FILED FOR RECORD AT 9:55 A.M. THIS 22nd DAY OF August 1919 AND DULY RECORDED ON THE 22nd DAY OF August 1919 IN BOOK 3 OF PLATS ON PAGE 29 RECORD VERIFIED.

GEO. O. BUTLER
CLERK CIRCUIT COURT
By: Fred E. Fenno
DEPUTY CLERK



Filed November 19th 1891
A. F. Quimby
Clerk Circuit Court
Juno Dade County FL.
Recorded in scale of 600 feet to one inch this 28th Day of December,
A.D. 1891.

A. F. QUIMBY
CLERK CIRCUIT COURT
By GEO. W. POTTER, DEPUTY.