

This is a True Copy of the Original Plat of Record of "WILLOUGHBY POINT" Plat Book 3, Page 24, Palm Beach County, Florida, New Martin County.

James E. Burch
REGISTERED LAND SURVEYOR
FLORIDA CERTIFICATE NO. 684

STATE OF FLORIDA }
COUNTY OF PALM BEACH }
This instrument was filed for Record at 3:25 PM this 23 day of April 1918 and duly recorded on the 23 day of April 1918 in Book 3 of Plats on Page 24, Record Verified.

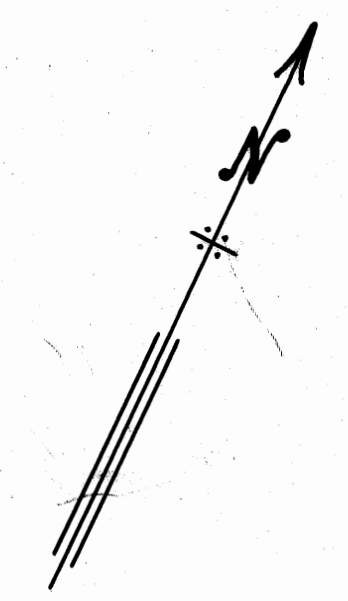
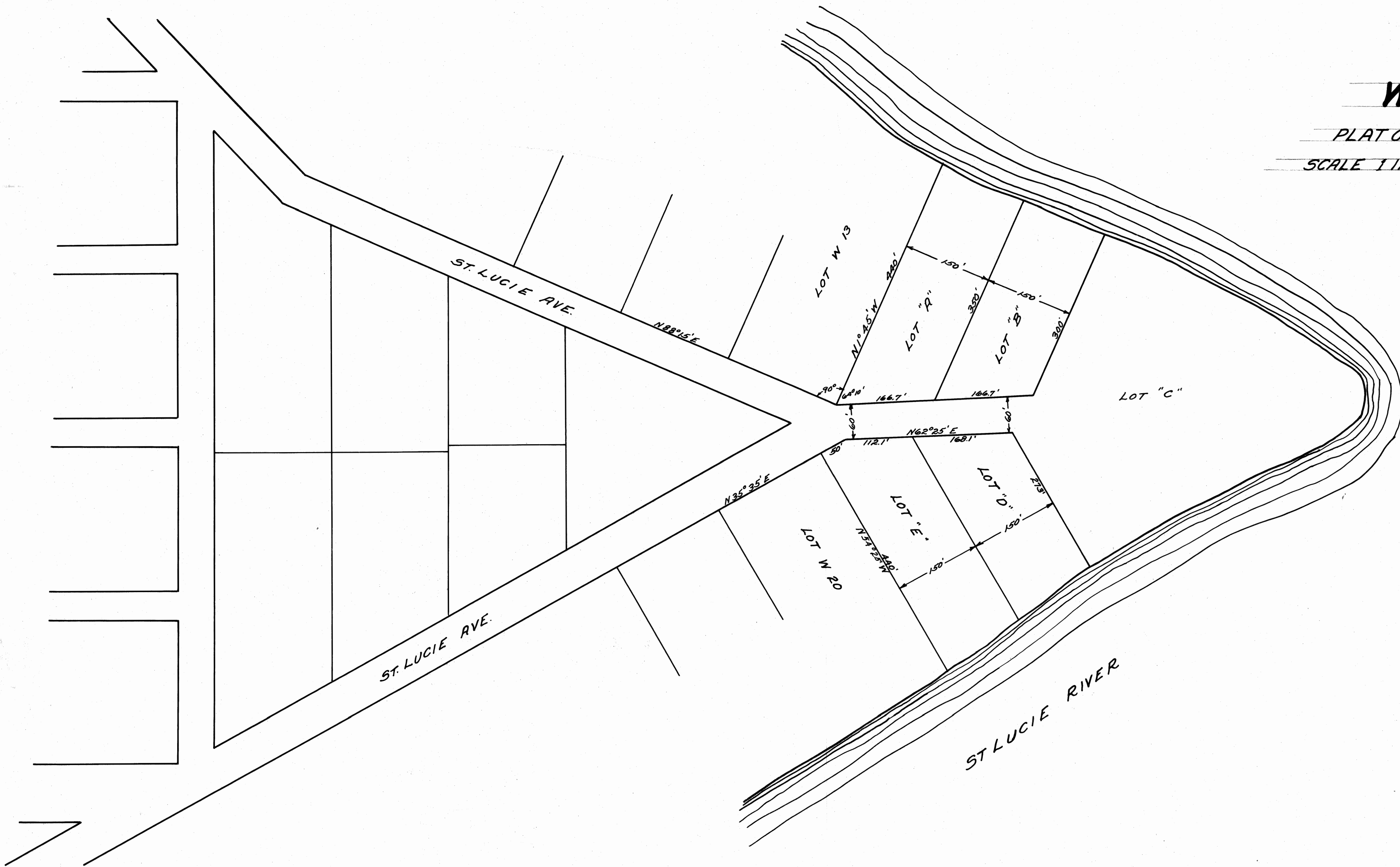
GEO. O. BUTLER
CLERK CIRCUIT COURT
BY: Orlando Dennis
DEPUTY CLERK

SUB-DIVISION OF WILLOUGHBY POINT

PLAT OF PORT SEWALL REVISED JUNE 1913

SCALE 1 INCH = 100 FEET

J.C. WAGEN, C.E.
MARCH, 1918.



State of Florida } s.s.
County of Palm Beach }

I, J.C. Wagen, Civil Engineer do hereby certify that this survey and plat was made by me, and to my best knowledge and belief the survey was correctly made and is correctly shown upon this plat.

J.C. Wagen, C.E.

Subscribed and sworn before me this 26 day of March, 1918.

Ward Randolph
Notary Public

My commission expires,
June 27, 1921.

State of Florida } s.s.
County of Palm Beach }

The Sewall's Point Land Co. has caused to be surveyed and platted the subdivision as shown hereon, according to the Surveyors Certificate attached and hereby dedicates to the public use, the streets shown hereon, reserving unto itself the reversion and reversions of same whenever discontinued by law.

Witness: J.C. Wagen
G.P. Rogers
J.H. Rogers
Secretary