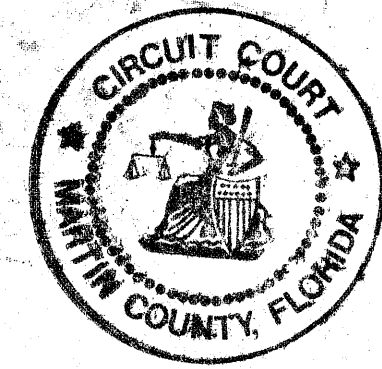


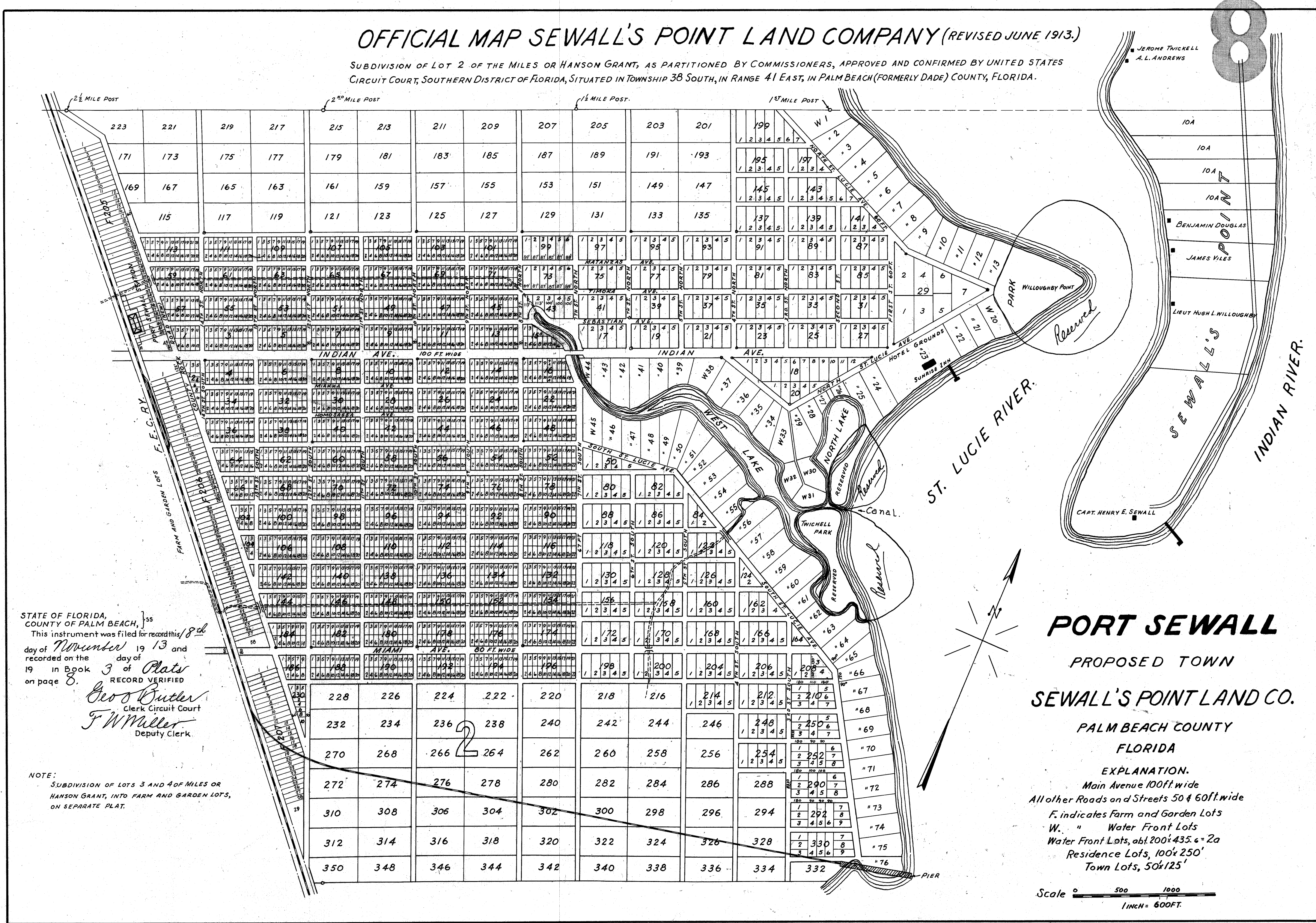
STATE OF FLORIDA } ss.  
COUNTY OF PALM BEACH }  
This Plat was filed for record at \_\_\_\_\_ M.  
this 18th day of November  
1913, and duly recorded in Plat Book No.  
3 on page 8  
GEO. O. BUTLER, Clerk Circuit Court  
By F. W. MILLER, D. C.



See surveyors certificate  
in OR Book 884  
pg 1261, MARSHA  
STILLER, Clerk of Circuit  
Court, by C. A. Brin, S.C.  
123-90

I HEREBY CERTIFY that this is a true copy of  
OFFICIAL MAP SEWALL'S POINT LAND COMPANY  
(REVISED JUNE 1913), as recorded in Plat Book 3, Page 8,  
Palm Beach County Records.

*George S. Brockway*  
Registered Land Surveyor  
Florida Certificate No. 131



STATE OF FLORIDA,  
COUNTY OF PALM BEACH, } ss.  
This instrument was filed for record this 8th  
day of November 1913 and  
recorded on the day of  
19 in Book 3 of Plats  
on page 8. RECORD VERIFIED  
*Geo. O. Butler*  
Clerk Circuit Court  
*F. W. Miller*  
Deputy Clerk.

NOTE:  
SUBDIVISION OF LOTS 3 AND 4 OF MILES OR  
HANSON GRANT, INTO FARM AND GARDEN LOTS,  
ON SEPARATE PLAT.

**PORT SEWALL**  
PROPOSED TOWN  
**SEWALL'S POINT LAND CO.**

PALM BEACH COUNTY  
FLORIDA  
EXPLANATION.  
Main Avenue 100ft wide  
All other Roads and Streets 50 & 60ft wide  
F. indicates Farm and Garden Lots  
W. " Water Front Lots  
Water Front Lots, abt 200' x 435' = 2a  
Residence Lots, 100' x 250'  
Town Lots, 50' x 125'

Scale 0 500 1000  
1 INCH = 600 FT.

GEORGE S. BROCKWAY  
REGISTERED ENGINEER & SURVEYOR  
WEST PALM BEACH, FLORIDA

**PORT SEWALL**  
Plat Book 3 Page 8  
Palm Beach County, Florida

FIELD:	SCALE:	Dwg. No.
OFFICE:		BF-13
DR. BY:	DATE:	
BK. PG.		