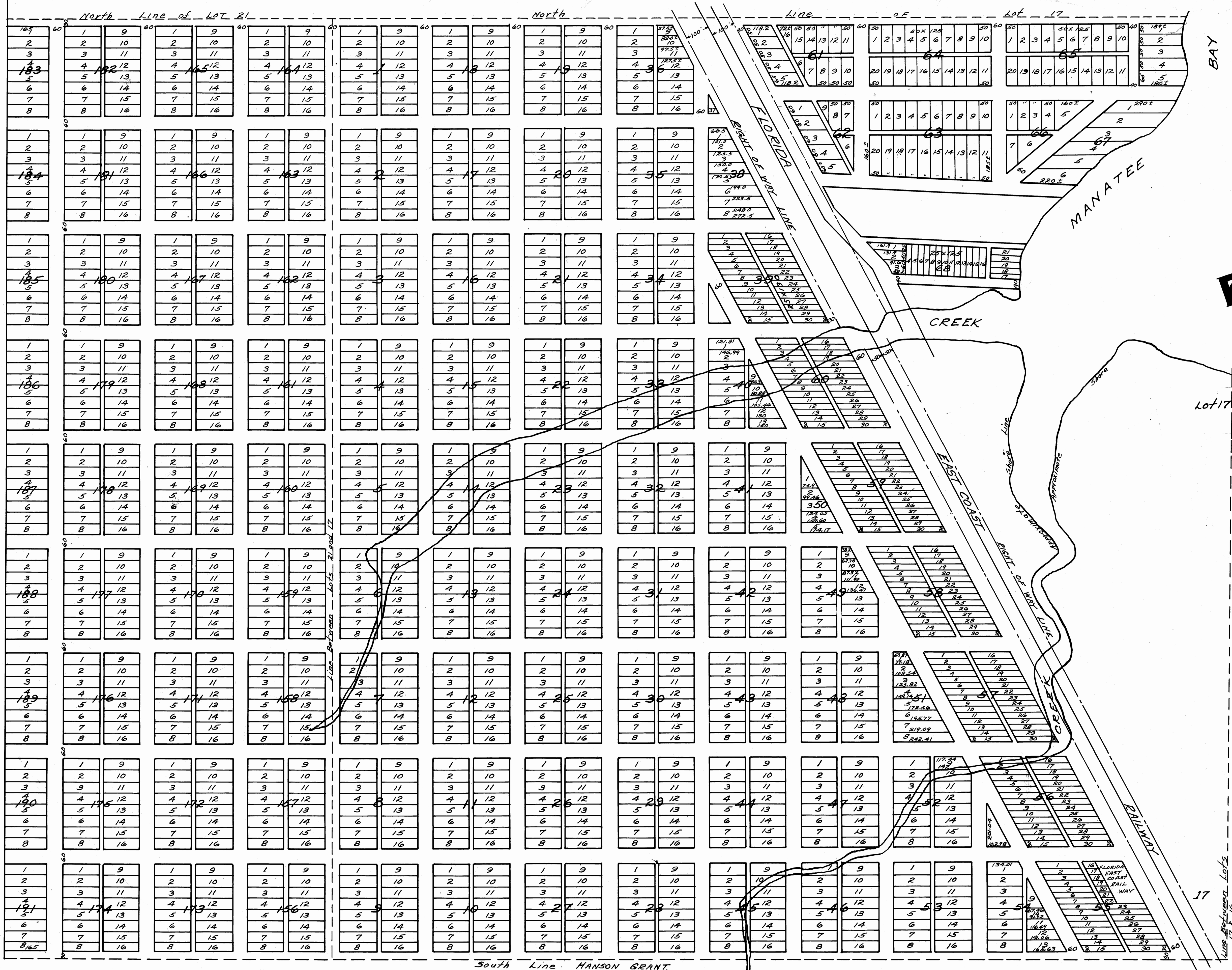


This is a true Copy of the Original Plat of Record of "PORT SALERNO" PLAT BOOK I, Page 132, Palm Beach County, Florida, Now Martin County.

Arch. A. Stalder
Registered Land Surveyor
Florida Certificate No. 443

STATE OF FLORIDA
COUNTY OF Palm Beach
This instrument was filed for Record this 9th day of March 1912 and duly recorded on the 22nd day of March 1912 in Book I of Plats on Page 132 Record Verified.
Newton B. Saunders Jr.
CLERK circuit court
BY: *Chas. E. Tenno*
DEPUTY CLERK



PORT SALERNO

PALM BEACH COUNTY FLORIDA

B.W. MULFORD CO.

MINNEAPOLIS MINN. - SALERNO FLA.
MILLER HALLOWES C.E.
WALTON FLA.

SCALE 1"=200'

JAN 12 1912

Lot 17 Lot 16

NOTE:

THE ABOVE PLAT REPRESENTS A PART OF LOT 17 AND A RE-PLAT OF LOTS 1-2-7-8 OF BLOCKS 73-74 & 75 OF LOT 21 OF THE COMMISSIONERS SUBDIVISION OF THE HANSON GRANT TOWNSHIP 38 S. RANGE 41 E.
RESIDENCE LOTS 47.5 X 150
BUSINESS LOTS 25 X 150
EXCEPT WHERE OTHERWISE SHOWN ALLEYS 15' WIDE.

STATE OF FLORIDA
COUNTY OF ST. LUCIE
I, Miller Hallows C.E. do hereby certify that the foregoing plat of Port Salerno was made by me and that the same is a true and correct location of the Blocks Lots streets water ways Centre Line of the Florida East Coast Railroad part of what it purports to be within the lines of Lot 17 of the commissioners subdivision of the HANSON GRANT, and also of that portion of Lot 21 of the Commissioners sub-division of the said Grant which adjoins Lot 17 on the West. The portion of Lot 21 taken into this plat being Tracts 1-2-7 & 8 in Blocks 73-74-75 of the plat of the St. LUCIE INLET FARMS which last mentioned plat is already of record and embraces and is a subdivision of the whole of the said Lot 21 according to the Commissioners original subdivision above referred to.

I further certify that this certificate is made by me at the request and by the authority of B.W. MULFORD for the purpose of placing the same upon record and that I thereby acknowledge the same as true and correct.

Miller Hallows
Sworn to and subscribed before me this 22nd day of Feb. A.D. 1912
J. Scott Waters

Notary Public of Florida
My Commission Expires July 13, 1914.

Copied by
BIDWELL & HOLSTLAW
Under direction of
C.H. RUGGLES
County Engineer

Tracing made by
Ellis Curtis & Kooker - Jacksonville Fla.

Traced by C.E.B. Checked by C.H.P.