

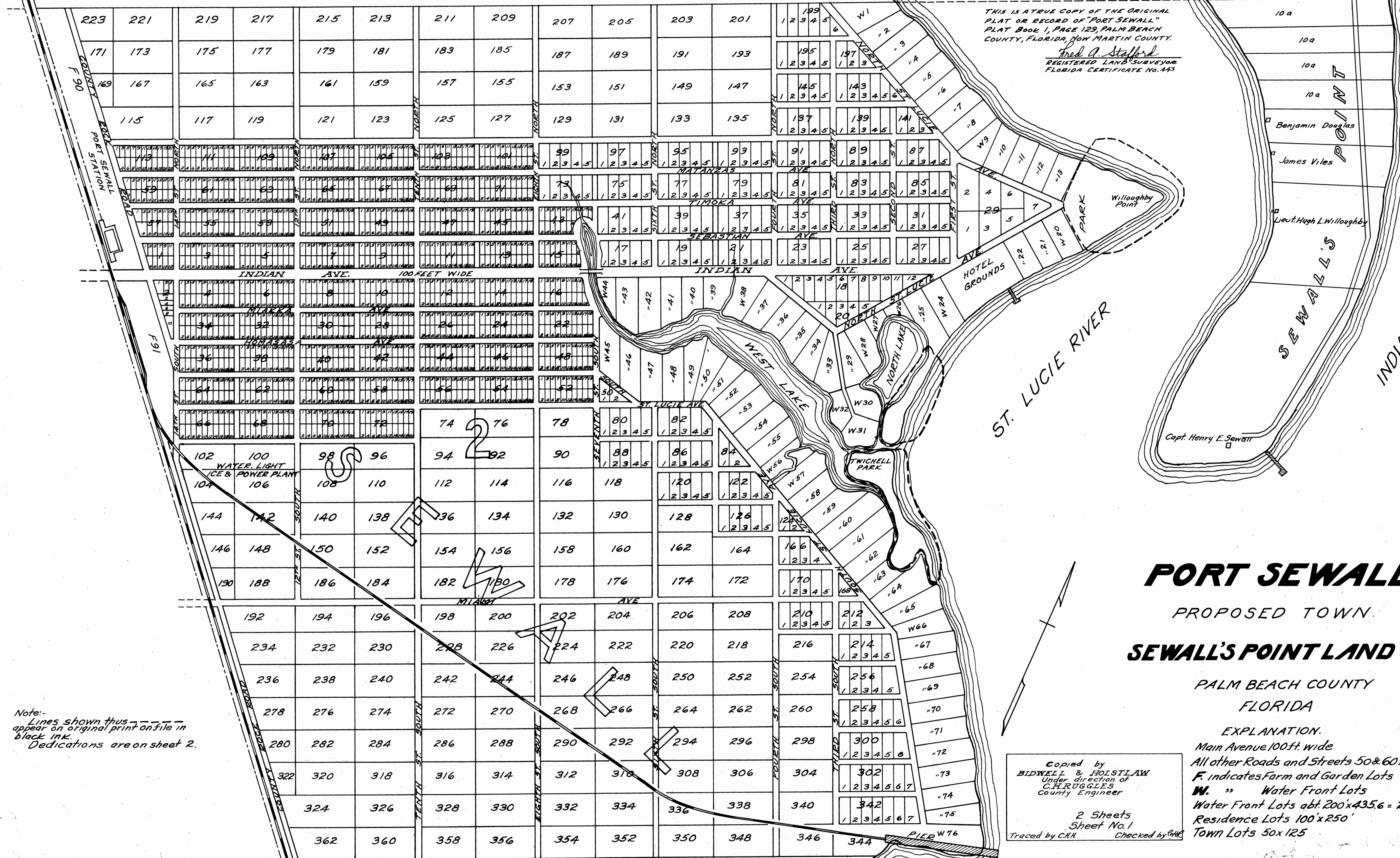
# OFFICIAL MAP SEWALL'S POINT LAND COMPANY

SUBDIVISION OF LOTS 2, 3 AND 4 OF THE MILES OR HANSON GRANT, AS PARTITIONED BY COMMISSIONERS APPROVED AND CONFIRMED BY UNITED STATES CIRCUIT COURT, SOUTHERN DISTRICT OF FLORIDA SITUATED IN TOWNSHIP 38 SOUTH, IN RANGE 41 EAST, IN PALM BEACH (FORMERLY DADE) COUNTY, FLORIDA

STATE OF FLORIDA }  
 COUNTY OF PALM BEACH } 55  
 THIS INSTRUMENT WAS FILED FOR  
 RECORD THIS 27<sup>th</sup> DAY OF November 1911  
 AND DULY RECORDED ON THE 27<sup>th</sup> DAY  
 OF November 1911 IN BOOK L OF PLATS  
 ON PAGE 129, RECORD VERIFIED.  
 CLERK CIRCUIT COURT

THIS IS A TRUE COPY OF THE ORIGINAL  
 PLAT OR RECORD OF "PORT SEWALL"  
 PLAT BOOK 1, PAGE 129, PALM BEACH  
 COUNTY, FLORIDA, NOW MARTIN COUNTY.  
 Fred A. Stafford  
 REGISTERED LAND SURVEYOR  
 FLORIDA CERTIFICATE NO. 443

to Jerome Twichell  
 to A.L. Andrews



Note:-  
 Lines shown thus ---  
 appear on original print on file in  
 black ink.  
 Dedications are on sheet 2.

## PORT SEWALL PROPOSED TOWN. SEWALL'S POINT LAND CO.

PALM BEACH COUNTY  
 FLORIDA

EXPLANATION.  
 Main Avenue 100ft. wide  
 All other Roads and Streets 50 & 60ft. wide  
 F. indicates Farm and Garden Lots  
 W. " Water Front Lots  
 Water Front Lots abt. 200x435.6 = 2a  
 Residence Lots 100'x250'  
 Town Lots 50x125

Copied by  
 BIDWELL & HOLSTILAW  
 Under direction of  
 C.H. RUGGLES  
 County Engineer  
 2 Sheets  
 Sheet No. 1  
 Traced by C.M.H. Checked by C.M.H.

