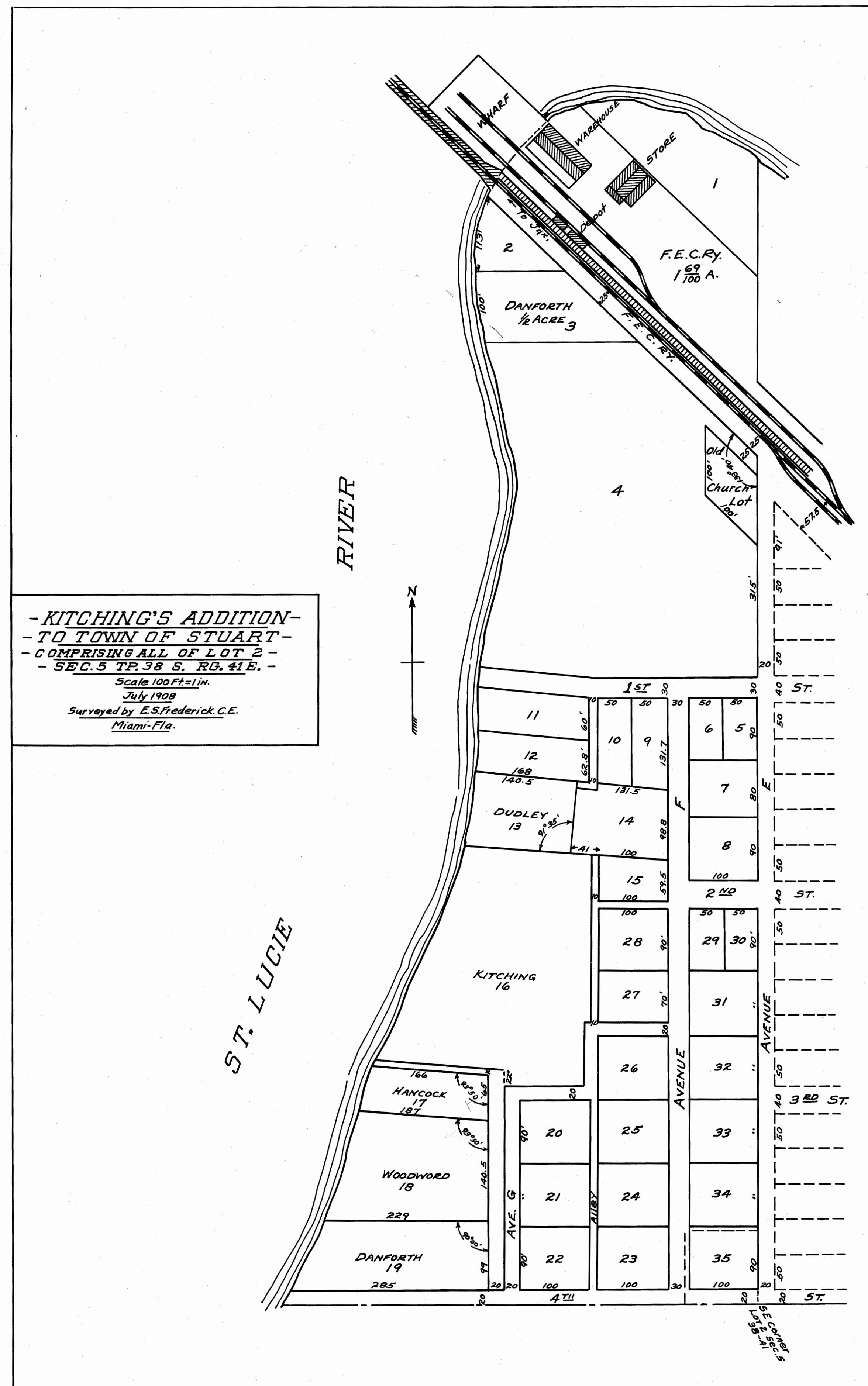


STATE OF FLORIDA }
 COUNTY OF PALM BEACH } 55
 THIS INSTRUMENT WAS FILED FOR
 RECORD THIS 25th DAY OF October
 1910 AND DULY RECORDED ON THE
 25th DAY OF October 1910 IN BOOK L
 OF PLATS ON PAGE 95 RECORD VERIFIED
 Fred C. Fenno
 CLERK CIRCUIT COURT
 BY _____
 DEPUTY CLERK

THIS A TRUE COPY OF THE ORIGINAL PLAT
 OF RECORD OF "KITCHINGS ADDITION"
 PLAT BOOK 1, PAGE 95, PALM BEACH
 COUNTY, FLORIDA, NOW MARTIN COUNTY.
 Fred A. Stafford
 REGISTERED LAND SURVEYOR
 FLORIDA CERTIFICATE NO. 443



-KITCHING'S ADDITION-
-TO TOWN OF STUART-
-COMPRISING ALL OF LOT 2-
-SEC. 5 TP. 32 S. RG. 41 E.-
 Scale 100 Ft. = 1 in.
 July 1908
 Surveyed by E.S. Frederick C.E.
 Miami, Fla.

Copied by
 BIDWELL & HOLSTLAW
 Under direction of
 CHUGGLE'S
 County Engineer

Traced by R.C.F. Checked by A.H.